



# SEABOATS

MARINE BROKERS WITH A GLOBAL APPROACH

AUSTRALIA - BULGARIA - INDIA - INDONESIA - ITALY - MALAYSIA - NEW ZEALAND - PANAMA - PHILIPPINES - SINGAPORE - SPAIN - UK - USA - VENEZUELA - VIETNAM

[sales@seaboats.net](mailto:sales@seaboats.net) - [www.seaboats.net](http://www.seaboats.net)

## NEW BUILD - 60m Offshore Support Vessel.



### Listing ID - 678445

**Description** NEW BUILD - 60m Offshore Support Vessel

**Length** 59.84m (196ft 3in)

**Beam** 13.80m (45ft 3in)

**Draft** 4.65m (15ft 3in)

**Location** ex Shipyard, Malaysia

**Broker** John Kearns  
[john.kearns@seaboatsbrokers.com](mailto:john.kearns@seaboatsbrokers.com)  
+64 21 400 805

**Price** POA

### GENERAL

Basic Function: Offshore Support Vessel

Classification: Bureau Veritas

Notation: BVI +HULL MACH, Special Service, Fire fighting1 with Waterspray / Offshore support vessel, Unrestricted Navigation, MLC 2006, Special purpose ships

Descriptive Note: Multipurpose Vessel

Gross Tonnage: 1547 Ton (approx.)

### DIMENSIONS

Length O.A.: 59.84m (196ft 3in)

Length B.P.: 53.84m (176ft 7in)

Breadth Mld: 13.80m (45ft 3in)

Depth Mld: 6m (19ft 8in)

Design Draft: 4.5m (14ft 9in)

Max Draft: 4.65m (15ft 3in)

Endurance: 30 Days

Deadweight: 1562.6T

## **CARGO CAPACITY**

Cargo Fuel Oil: 326.8 m<sup>3</sup>

Cargo Fresh Water: 443.8m<sup>3</sup>

Deck Strength: 7 Ton/m<sup>2</sup>

Open Deck Space: est. 400m<sup>2</sup>

## **CARGO DISCHARGE RATE**

Fuel Oil 2 (Two) Dia. 80, 200m<sup>3</sup> /hr, 75th

Fresh Water 1 (One) Dia. 80, 100m<sup>3</sup> /hr, 75th

## **TANK CAPACITY**

Fresh Water Ballast: 301.9m<sup>3</sup>

Portable Water: 348.4m<sup>3</sup>

Daily Fuel Oil: 340.2m<sup>3</sup>

Foam: 16.3m<sup>3</sup>

## **PERFORMANCE**

Free Running Speed: 12 knots

F.O. Cons Max Speed est. 15T perday

F.O. Cons Service Speed est. 7.5T perday

## **PROPULSION SYSTEM**

Main engine: 2X Cummins KTA50-M2, 1800bhp at 1900rpm, 1342kW

Propellers: 2X BERG, CPP, Dia. 2250mm (4 blade, brand) With KORT-NOZZLE

Steering System: 2X 4.0TM INDEPEDENT STEERING SYSTEM, OVER 2 X 35° STEERING ANGLE

Bow thruster Engine: 1X Caterpillar C18, 601bkW at 1800rpm

Bow Thruster: 1X BERG, 8 Ton, CPP

## **AUXILIARY EQUIPMENT**

Network: 415V, 50Hz

Marine generator engine: 3X Caterpillar C18 each 275 ekW at 1500rpm

Emergency generator set: 1X Cummins 6BT5.9DM, 80kW, 100kVA, 122.13bhp at 1500rpm

## **PUMP EQUIPMENT**

Cargo F.O. Pump: 2 x 75m Total Head, 200m<sup>3</sup>/h

F.O. Transfer Pump Cargo Fuel Oil Transfer: 1 X 75m Total Head, 100m TH

F.O. Transfer Pump Ship's Fuel Oil: 1 X 15m Total Head, 20m TH

Oily Bilge Separator: 1 x 1m<sup>3</sup>/h x 2 kg/cm<sup>2</sup>

Dirty Oil Pump: 1 x 15m Total Head, 8m TH

F.W. Transfer Pump: 1 x 75m Total Head, 100m TH

Sewage Pump: 2 x 15m Total Head, 8m TH

Air-Cond S.W. Cooling Pump: 2 x 30m Total Head, 48m TH

Chiller/Freezer S.W. Cooling Pump: 1 x 30m Total Head, 25m TH

ECR Package A/C S.W. Cooling Pump: 1 x 30m Total Head, 5m TH

F.W. Pressure Set & Sea Water: 3 x 35m Total Head, 5m TH

H.W. Circle Pump: 1 x 35m Total Head, 0.4m TH

Bilge Pump: 1 x 57m Total Head, 50m TH

Ballast Pump: 1 x 57m Total Head, 50m TH

G.S. Pump: 1 x 57m Total Head, 50m TH

Fire Pump: 1 x 57m Total Head, 50m TH

Emergency Fire Pump: 1 x 45m Total Head, 40m TH

Sewage Treatment Plant: MAX. 58 Persons / Days, Flow rate: 4375L / days

Sewage Pump: 8m<sup>3</sup>/h @ 75m TH

Calorifire: 4 x Joven 90 Liter

### **FIRE FIGHTING SYSTEM**

Capacity 2X 1200m<sup>3</sup>/hr, per Monitor

Foam: 1X Foam inductor adjustable, Max 300 l/min, 16.7 bar inlet pressure

Oil Dispersant: Dispersant system included

### **DECK LAYOUT**

Hydraulic anchor windlass: 1X 8 ton capacity, 36mm U2 grade chain

Hydraulic Tugger winch: 2X Single drum, wire rope, Dia. 20mm x 200m

Hydraulic telescopic crane: 10T static load, 15m outreach

Towing hook: 1X Disc type, pneumatic quick release, 40T (rated), 60T (proof), 24V DC

### **ACCOMMODATION**

Berths:

1 men room x 2

2 men room x 6

4 men room x 9

Berths Total: 50 Men

### **NAVIGATION & COMM EQUIPMENT (A1 + A2 +A3)**

Radar System: 1 x Furuno FAR 2177

GMDSS Sea Area A1-A2-A3: 1 x Furuno Model RC-1800T 250W GMDSS

GPS: 1 x Furuno GP 150

HF: 1 x Furuno FS 2575

AIS: 1 x Furuno FA 150

Speed Log: 1 x Furuno Model DS-80

Echo Sounder: 1 x Furuno FE 700

MF/VHF Radio Telephone: 1 x Furuno FS 2575

Navtex Receiver: 1 x Furuno NX 700 B

Radar Transponder: 2 x KANNED MARINE SART RADAR TRANSPONDER

EPIRB: 1 x GME ME403FF EPIRB

Walkie Talkie (GMDSS); 1 x SAMYUNG Model STV-160 Walkie Talkie

Gyro Compass (IMO): 1 x SIMRAD GC 80

Bridge Navigational Watch Alarm System: 1 x Furuno Model BR-500

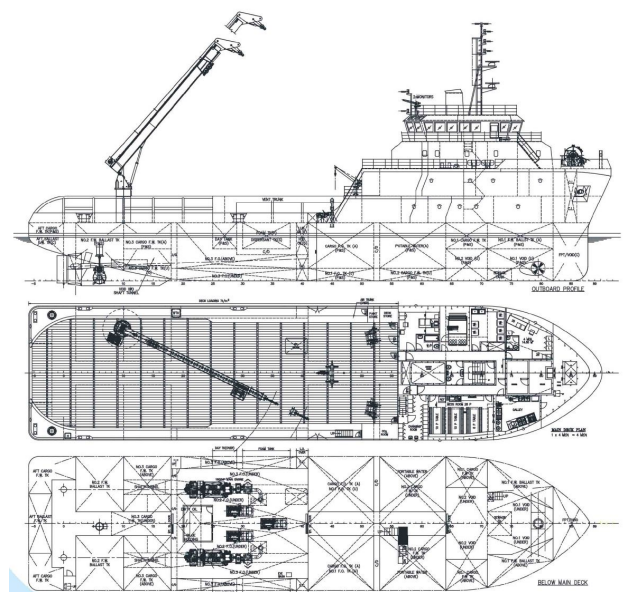
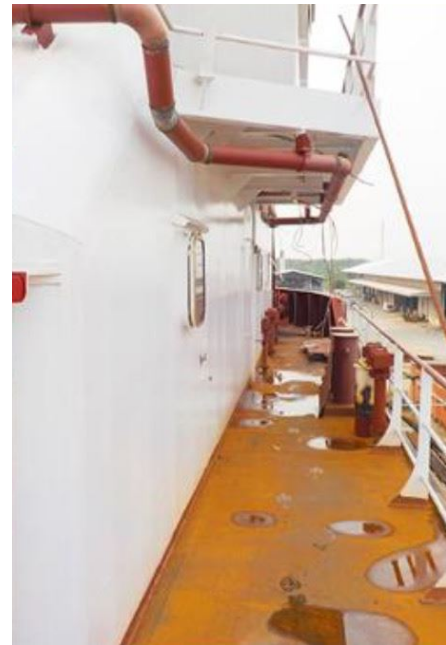
### **SPECIAL REMARK**

1. Moon Pool (upgradable) DIM. 2.4m x 2.4m

2. Upgradable to DP1







The details of all vessels are offered in good faith but we cannot guarantee or warrant the accuracy of this information nor warrant the condition of the vessel. Any buyer should instruct their agents, or their surveyors, to investigate such details as the buyer desires validated. This vessel is offered subject to sale, price change, location or withdrawal without notice.



AUSTRALIA - BULGARIA - INDIA - INDONESIA - ITALY - MALAYSIA - NEW ZEALAND - PANAMA - PHILIPPINES - SINGAPORE - SPAIN - UK - USA - VENEZUELA - VIETNAM