



# SEABOATS

MARINE BROKERS WITH A GLOBAL APPROACH

AUSTRALIA - BULGARIA - INDIA - INDONESIA - ITALY - MALAYSIA - NEW ZEALAND - PANAMA - PHILIPPINES - SINGAPORE - SPAIN - UK - USA - VENEZUELA - VIETNAM

[sales@seaboats.net](mailto:sales@seaboats.net) - [www.seaboats.net](http://www.seaboats.net)

## OSV / USV 2000 BHP 36M 2008 Available for Charter



### Listing ID - 866944

**Description** OSV / USV 2000 BHP 36M 2008 Available for Charter

**Date** 2008

**Launched**

**Length** 36m (118ft)

**Beam** 9.80m (32ft)

**Draft** 3.50m (11ft 5in)

**Location** UAE

**Broker** Geoff Fraser  
[geoff.fraser@seaboats.net](mailto:geoff.fraser@seaboats.net)  
+64 21 61 222 5

Built: Dec., 2008

G.R.T: 387T

N.T: 116T

Class: ABS

Notation: A1, Towing Vessel, AMS

### DIMENSIONS:

Length Overall: 36m (118ft)

Length B.P: 33.28m (109ft 2in)

Breadth Moulded: 9.80m (32ft)

Depth Moulded: 4.30m (14ft)

Draft Moulded: 3.50m (11ft 5in)

#### **MACHINERY:**

Main Engines: 2 X 1000 BHP / Caterpillar 3508 B

Auxiliary Engines: 2 X 215 kw / Caterpillar 3406 C

Bow Thruster: 1X 200 BHP Electrical motor driven thrust.

Propellers: 2 X Fixed Pitch Propeller.

Rudders: Conventional; 2 X Stockless anchors with 15 lengths

Anchors: 22 mm dia. Stud link chain.

Maximum Speed: 12.00 Knots

#### **CAPACITY:**

Deck Strength: 2.5 Tons/m<sup>2</sup>

Clear Deck Area: 130 m<sup>2</sup>

Fuel Oil: 260.8 m<sup>3</sup>

Fresh Water: 99.124 m<sup>3</sup>

Chiller: 6 m<sup>3</sup>

Freezer: 6m<sup>3</sup>

#### **DISCHARGE RATE:**

Fuel Oil: 35 m<sup>3</sup>/ hr at 40 m head

Portable Water: 35 m<sup>3</sup>/hr at 40m head

#### **TOWING HANDLING EQUIPMENT**

Bollard Pull: 29.81 T

Towing/ Anchor Handling: 1 X 30 Tons Brake hold 40 Tons.

Towing Winch: Single Drum, Waterfall arrangement.

Drum Capacity: 33 mm dia. X 500m

## **DECK & AUXILIARY EQUIPMENT**

Anchor Windlass: 1 X 3 Tons at 12 m/min

Deck Crane: 1 X 3T@ 6M

## **ACCOMMODATION**

2 X 1 Man

5 X 2 Men

2 X 4 Men

Total: 20 men

## **RADIO & NAVIGATION EQUIPMENT**

SSB: 1 X JRC

VHF: 3 X JHS-7E-Furuno

Radar: 2 X JMA-5210-6-JRC

Echo Sounder: 1 X JEF-380-JRC

Gyro Compass: 1 X GMZ900-JRC

GMDSS: 1 x JRC-JSB-196 GM

Magnetic Compass: 1 x JRC

Speed Log: 1 x JRC-JLN-205

Auto Pilot: 1 x JRC

Navtex Receiver: 1 x JRC, NCR-333

DGPS Navigation: 1 x JRC, J-NAV 500

AIS: 1 x JRC, JHS-182

EPIRB / SART: 1 x JRC, JQE -103

Joy Stick Control: 2 X Palmarine

Weather Facsimile: 1 X JRC JAX-9B

VDR

## **FIRE FIGHTING EQUIPMENT:**

External:

Fire Pump: 1 X 650 m<sup>3</sup>/hr at 10 bar.

Fire Monitors: 2 water monitors (one with Double barrel for foam discharge).

Fixed Water Spraying: All round water curtain 35 m<sup>3</sup>/hr.

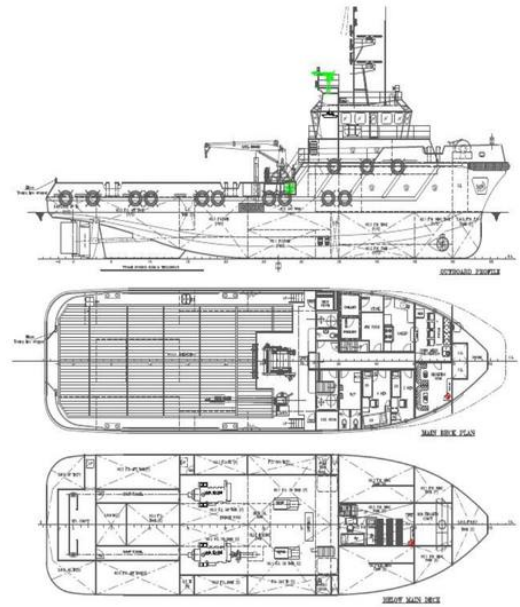
Internal:

Co2 system for E/R: Fixed central bank.

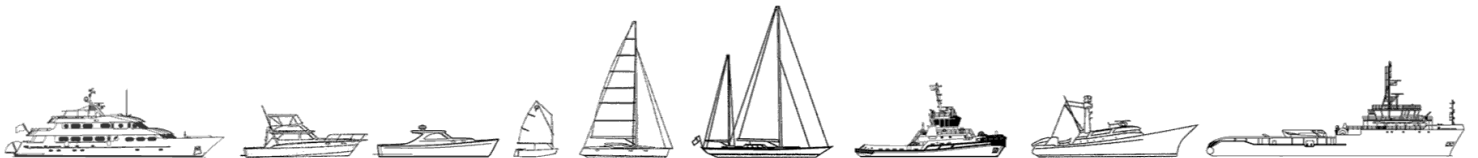
GS & Fire Pump: 1 x 35 m<sup>3</sup> /hr at 33 m head.

Emergency Fire Pump: 1 X 25 m<sup>3</sup>/hr at 30 m head.





The details of all vessels are offered in good faith but we cannot guarantee or warrant the accuracy of this information nor warrant the condition of the vessel. Any buyer should instruct their agents, or their surveyors, to investigate such details as the buyer desires validated. This vessel is offered subject to sale, price change, location or withdrawal without notice.



AUSTRALIA - BULGARIA - INDIA - INDONESIA - ITALY - MALAYSIA - NEW ZEALAND - PANAMA - PHILIPPINES - SINGAPORE - SPAIN - UK - USA - VENEZUELA - VIETNAM