



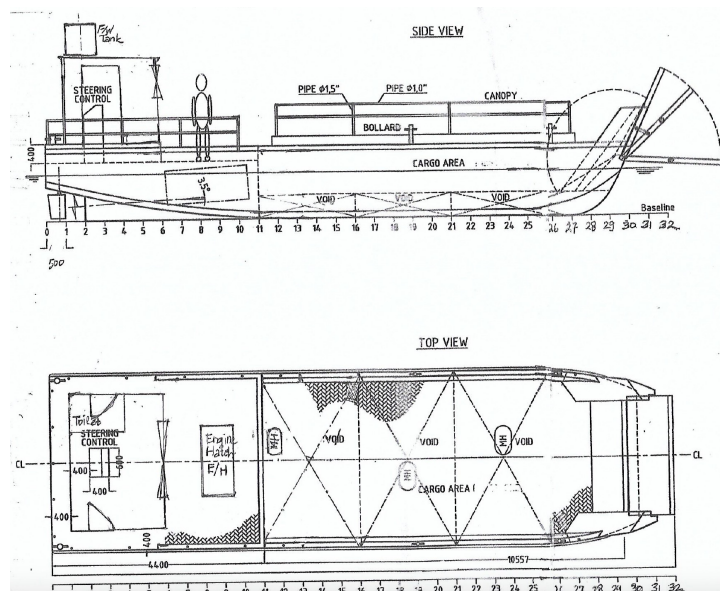
# SEABOATS

MARINE BROKERS WITH A GLOBAL APPROACH

AUSTRALIA - BULGARIA - INDIA - INDONESIA - ITALY - MALAYSIA - NEW ZEALAND - PANAMA - PHILIPPINES - SINGAPORE - SPAIN - UK - USA - VENEZUELA - VIETNAM

[sales@seaboats.net](mailto:sales@seaboats.net) - [www.seaboats.net](http://www.seaboats.net)

## NEW BUILD - 13m Aluminium LCT



### Listing ID - 1483

**Description** NEW BUILD - 13m Aluminium LCT

**Date Launched** Built to Order / Build time 3 months from signed contract.

**Length** 13m (42ft 7in)

**Beam** 2.8m (9ft 2in)

**Draft** abt 0.2 to 0.4m

**Location** East Java, Indonesia

**Broker** Franklin Taylor  
[franklin.taylor@seaboatsbrokers.com](mailto:franklin.taylor@seaboatsbrokers.com)  
+64 27 276 5383

**Price** USD 89,500. Ex-factory

Type: Landing Craft Utility (LCU)

Hull: Aluminium 1100 (industry), non class due to small boat (under harbor master regulation), endurance max 20 nm, day boat

Double hull, double bottom, except in E/R

Displacement abt 16-17 ton, Lightweight abt 2 tonnes

### Principal Particulars

Length overall: abt 13 m

Breadth: abt 2.8m

Depth to main deck : abt 0.6 m

Height from bottom line to side wall: abt 1.6 m

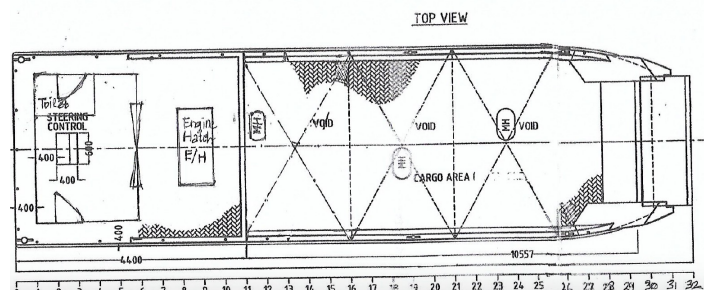
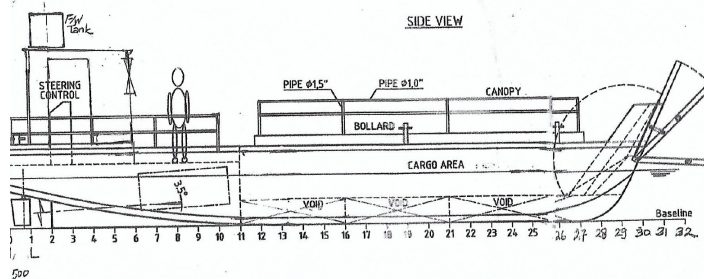
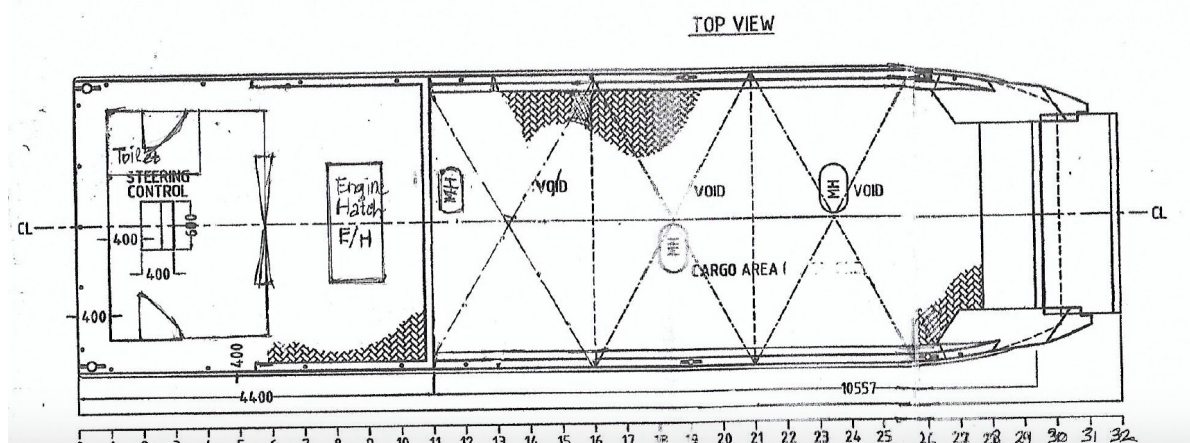
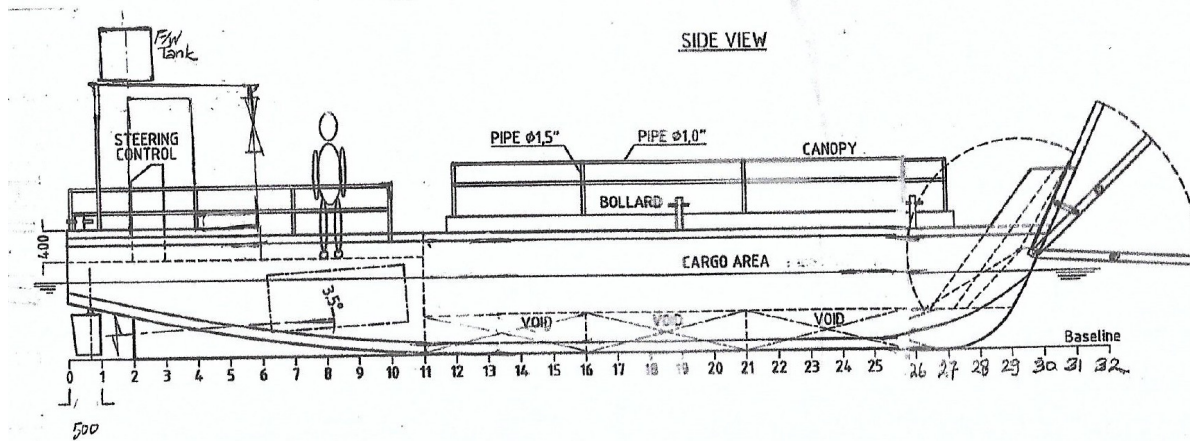
Draught max: abt 0.2 to 0.4 m

Drop gate/ramp door: 1 (double plate, 1 x 1.5 m)

Bollard: 6  
Hand winches and steel wire: 2  
Frame spacing: abt 0,5 m  
Service speed at light: abt 12 to 15 knots  
No paint ( optional)  
Canopy + canvas cover for cargo area  
Canopy: galvanized pipes or stainless steel  
Complement: abt 2 crews  
Live saving appliances: life buoys (2) , life rings (4)  
Navigation light: 2  
VHF radio: 1  
Battery 2  
Simple wheel house  
Steering console  
Manhole access to E/R:1  
Ventilation in E/R by goose neck  
Railing  
Small anchors and chain 1  
Simple toilet 1  
Aluminium seat benches 40x40x35

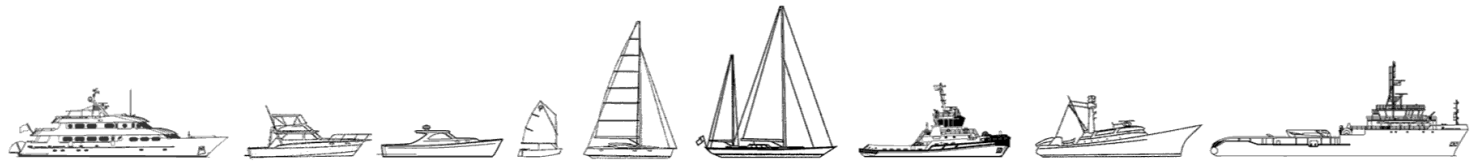
### **Machinery / Propulsion**

Single engines  
Main engine in board, 4D32, 1 x (120) ps, Mitsubishi marinised ex sin,  
Battery 1  
Gear box  
Shafting 1  
Propeller 1  
Rudder 1 (aluminium)  
Rudder stock 1  
Mechanical Steering by chain  
Fuel capacity tank max 400 litres  
Spec fuel consumption 25 to 30 litres per hour,  
FRP (1) fresh water tank for toilet  
Area of cargo without pax: ( 8m x 2,6 m)  
If pax = 20 pax (with seat benches)  
Area of pax ( 4 m x 2,6 m), area of cargo ( 4 m x 2,6 m)  
Volume of cargo without pax: ( 8 m x 2,6 m x 0,7 m)



The details of all vessels are offered in good faith but we cannot guarantee or warrant the accuracy of this information nor warrant the condition of the vessel. Any buyer should instruct their agents, or their surveyors,

to investigate such details as the buyer desires validated. This vessel is offered subject to sale, price change, location or withdrawal without notice.



AUSTRALIA - BULGARIA - INDIA - INDONESIA - ITALY - MALAYSIA - NEW ZEALAND - PANAMA - PHILIPPINES - SINGAPORE - SPAIN - UK - USA - VENEZUELA - VIETNAM