



SEABOATS

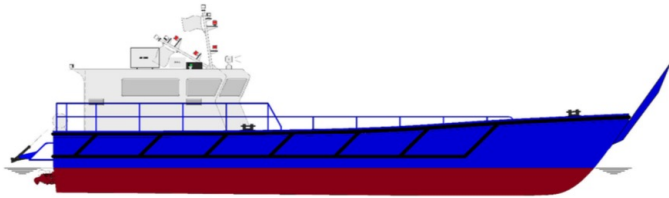
MARINE BROKERS WITH A GLOBAL APPROACH

AUSTRALIA - BULGARIA - INDIA - INDONESIA - ITALY - MALAYSIA - NEW ZEALAND - PANAMA - PHILIPPINES - SINGAPORE - SPAIN - UK - USA - VENEZUELA - VIETNAM

sales@seaboats.net

www.seaboats.net

NEW BUILD - 20m Landing Craft



Listing ID - 1494

Description NEW BUILD - 20m Landing Craft

Date Built to Order

Launched

Length 20m (65ft 7in)

Beam 5.40m (17ft 8in)

Draft 1m (3ft 3in)

Location ex Shipyard, Singapore

Broker John Kearns
john.kearns@seaboatsbrokers.com
+64 21 400 805

1. GENERAL

Vessel Purpose: Construction and Maintenance support, Cargo Supply, Personnel Transfer, etc.

Vessel Type: Monohull, Semi displacement

Hull: Aluminium Alloy

Superstructure: Aluminium Alloy

Length (hull): 20m (approx)

Beam (overall): 5.40m (approx)

Depth: 2.35m (approx)

Draft: 1m(approx)

TANKAGE

Fuel Oil: 2,000 litres (approx)

Freshwater: 250 litres (approx)

Sewage Holding: 250 litres (approx)

OPEN DECK SPACE

Area: 58 sq metres (approx)

Deck strength: 2 ton/m²

Compliment: 28 passengers + 2 crew

Classification Society: Bureau Veritas

Notation: I • HULL • MACH Lightship/Utility Vessel, coastal service

Scantlings: To meet BV Class requirement for up to 2 metres significant wave height

2. MECHANICAL SYSTEM

Main Engines: 2 units CATERPILLAR C9.3, 375bhp @ 1800 rpm

Propulsion: 2 x MJP or HAMILTON Waterjets

Clutch: 2 x LOGAN Clutch

Generator: 1 unit 20 ekW, 240V, 1 phase, 50Hz

3. PLUMBING & PIPING

Bilge System

Individual Submersible Pumps

Alarm and centralised control at wheelhouse

Fire Main System

1 unit electrical driven centrifugal pump

2 x fire hydrant with hose reel (E/R and Main Deck)

Remote start/stop in wheelhouse

Emergency Fire & Bilge pump

1 unit portable submersible pump

Seawater Systems

Seawater shall be supplied to the following services:

Main Engines

Generator Engines

Fire Main System

Freshwater Systems

FW Tank: 1 no, total approx 250 litres

Tank construction: non-integral to hull

Tank sounding: level gauge at tank bhd

FW Tank Filling: 40ND Above deck: SS304, below deck: MS

FW Tank Vent pipe size: 50ND Above deck: SS304, below deck: MS

Pressurised distribution System to pantry and toilet

1 x Auto Freshwater Pump 17 Ltr/min 220V

Grey Water System

Directly piped overboard

Black Water System

Piped to sewage holding tank with bypass to overboard

Macerator pump for sewage tank discharge with international shore connection
Sewage Holding Tank: 1 no, approx 250 litres

FUEL OIL SYSTEM

FO Tank: 1 no, total approx 2,000 litres

Tank construction: non-Integral to hull

Tank sounding: Electrical Gauge with display at wheelhouse & Level gauge at tank

FO Tank Filling: 40ND Above deck: SS304, below deck: MS

FO Tank Vent pipe size: 50ND Above deck: SS304, below deck: MS

M/E Supply pipe size: 15ND MS API pipe sch 40

G/E Supply pipe size: 15ND MS API pipe sch 40

Fuel return line pipe size: 15ND MS API pipe sch 40

Fuel Oil Quick closing: Remote pull wire type

4. HVAC

Engine Room Ventilation

Air in trunk

Ventilation Style: Fan forced

Fan style: Fan (1 phase)

Trunking location: Main deck

Air out trunk

Ventilation Style: Fan forced

Fan style: Natural

Trunking location: Main deck

Other spaces: 50ND tube with weathertight closing device

Air Conditioning

Passenger area, wheelhouse & crew accommodation.

HVAC Style: Split Unit air cooled (LG or equivalent)

Capacity: 30,000 btu (1 outdoor & 2 indoor Units)

5. ELECTRICAL

Voltage

AC Voltage and Frequency: 240V/ 1 phase / 50Hz

DC Voltage: 24V

Batteries

Engine Starting Battery: As per Engine Maker's recommendation

Nav & Comm Battery: 2 x 12V 150AH

Switchboards

1 x 220V Distribution board

1 x 24V Distribution board

Deck lightings

Main deck: 2 x Floodlights LED 50W 4500LM

Around deck house: 4 x double tube lights with emergency backup batteries

Shore supply socket: Installed at main deck

Main deck electrical socket; 1 x 230V

Internal lightings: Adequate and suitable lightings, including emergency back up batteries shall be provided in all internal spaces. Tanks excluded.

DECK EQUIPMENT

Anchoring

Anchor Windlass: 1 unit x Manually operated

Anchor Size & Quantity: 1 unit x According to BV EN calculation

Anchor Style: High Holding Power

Chain Length & Material: Steel wire rope, according to BV EN calculation

Ramp Door

Approx 3.5m x 3.7m, open web system for Captain's line of sight.

Manually operated with winch or chain pulley

Double Bitt Bollards: 6 sets

ACCOMMODATION

Thermal Insulation

On (internal) - exterior surfaces: mineral wool batts

Interior Linings

Wheelhouse, Passenger Areas & Crew accommodation

Floor coverings: Vinyl Flooring / Rubber studded mat

Wall Linings: Aluminium Composite Panels

Ceiling Linings: Aluminium Composite Panels

External Fore and Aft deck

Floor coverings: Painted with anti-slip

Wall Linings: Painted

Ceiling Linings: Painted

Internal Passenger seats: 28 units PVC lined

Pilot chair: 2 units installed in wheelhouse

Toilet

Location: 1 no. at main deck

Fittings: 1 no. gravity type toilet bowl

1 no. wash basin with tap

Floor coverings: Painted with Anti-slip

Wall Linings: Painted

Ceiling Linings: Painted

Pantry

Fitted at main deck with the followings:

1 x wash basin with tap and cabinet below

1 x 20L microwave oven

1 x 1900W induction cooker

1 x 45L bar fridge

PAINT & PROTECTION

Painting System: BERGER Paints or Equivalent

Colour Scheme: To be approved by Owner

Hull Below Waterline

Surface preparation: mechanical etch

1 coat Primer

1 coat tie-coat

1 coat Anti-fouling

Hull Above Waterline

Surface preparation: mechanical etch

1 coat Primer

1 coat Finishing

Superstructure Exterior

Surface preparation: mechanical etch

1 coat Primer

1 coat Finishing

External Decks

Surface preparation: mechanical etch

1 coat Primer

1 coat Finishing with anti slip

Toilet

Surface preparation: mechanical etch

1 coat Primer

1 coat Finishing

Cathodic Protection: The vessel shall be fitted with sacrificial zinc anodes for 12 months protection.

NAVIGATION & COMMUNICATION EQUIPMENT

Navigation Equipment

Radar: 1 x Garmin GMR18HD (36 nm)

Plotter: 1 x Garmin Aquamap 80xs (8inch)

GPS: 1 x Garmin GA 38 (display on Aquamap 80xs)

Echo sounder: 1 x Airmar SS502 (display on Aquamap 80xs)

Magnetic compass: 1 x SeaMaster 7800F

AIS: 1 x Em-Trak B100 (Class B)

Search light: 1 x TG26 500W

Clear view screen: 2 x Daiko or equivalent

Communication Equipment (GMDSS A1)

GMDSS Fixed Mount DSC/VHF: 1 x Samyung STR-6000A

Navtex: 1 x Samyung SNX300

Handheld VHF: 2 x Samyung STV160

SART: 1 x Samyung SAR 9

EPIRD: 1 x Samyung SEP 500

Air horn: 1 x Marco

Public Address system: 1 x Soundtech

Navigation lights

5 x lights (mast, anchor, port, stbd, stern)

2 x NUC

SAFETY & LIFE SAVING EQUIPMENT

Fire Alarm & Detection System: Appropriate smoke and heat detectors shall be fitted at various internal spaces.

General Alarm: Integral to Fire alarm

Engine room fixed fire fighting: Aerosol

Portable fire extinguishers

2 x 9 litres portable foam fire extinguisher

4 x 6 litres portable dry powder fire extinguisher

Life Saving Apparatus

1 x 30 men Life Raft

2 x Lifebuoy 2.5kg

2 x LifeBuoy 2.5kg with 30mtr Lifeline

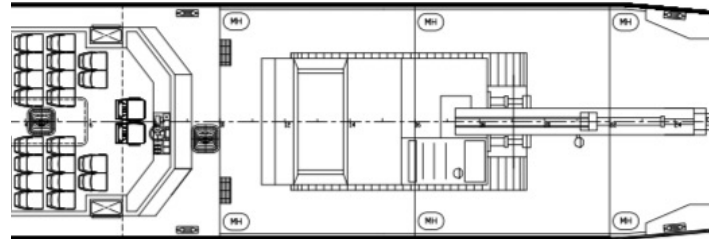
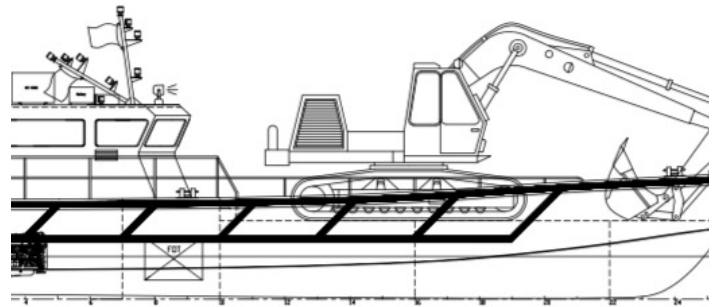
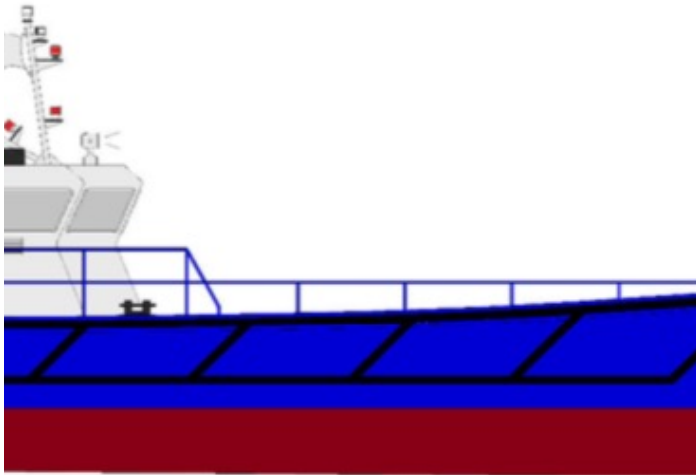
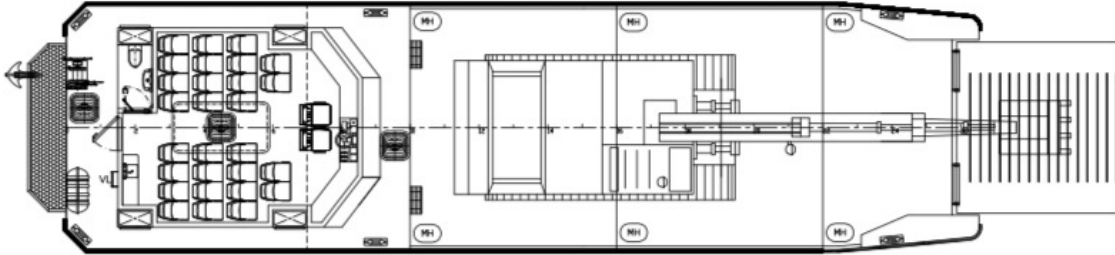
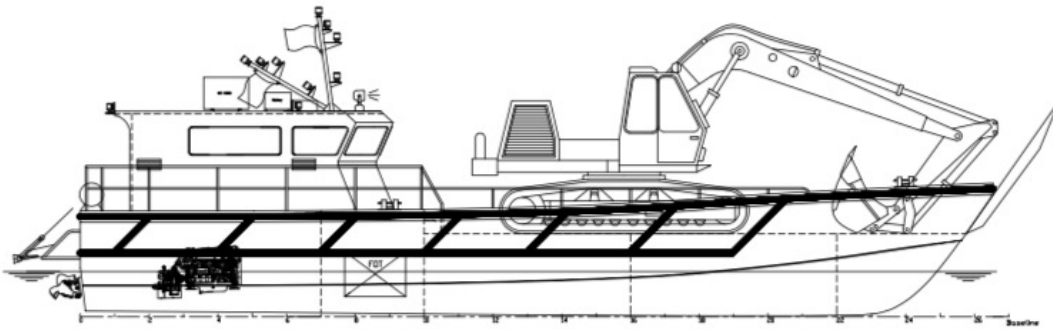
2 x Lifebuoy 2.5kg c/w Self Igniting Light

30 x SOLAS approved Adult Life Jackets

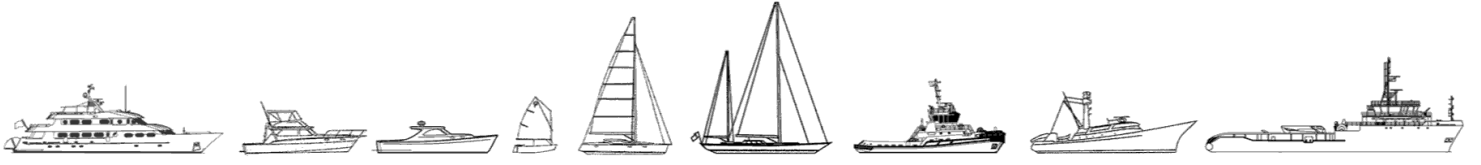
1 x 25 men First Aid Kit

12 x Rocket parachute flares

6 x Red hand flares



The details of all vessels are offered in good faith but we cannot guarantee or warrant the accuracy of this information nor warrant the condition of the vessel. Any buyer should instruct their agents, or their surveyors, to investigate such details as the buyer desires validated. This vessel is offered subject to sale, price change, location or withdrawal without notice.



AUSTRALIA - BULGARIA - INDIA - INDONESIA - ITALY - MALAYSIA - NEW ZEALAND - PANAMA - PHILIPPINES - SINGAPORE - SPAIN - UK - USA - VENEZUELA - VIETNAM