



SEA BOATS

MARINE BROKERS WITH A GLOBAL APPROACH

AUSTRALIA - BULGARIA - INDIA - INDONESIA - ITALY - MALAYSIA - NEW ZEALAND - PANAMA - PHILIPPINES - SINGAPORE - SPAIN - UK - USA - VENEZUELA - VIETNAM

sales@seaboats.net

www.seaboats.net

NEW BUILD - 40m Offshore Ferry - Kitset



Listing ID - 1920

Description NEW BUILD - 40m Offshore Ferry

Date Built to Order

Launched

Length 39.6m (129ft 11in)

Beam 11m (36ft)

Draft 1.4m (4ft 7in)

Location 2x MTU Engines

Broker Geoff Fraser
geoff.fraser@seaboats.net
+64 21 61 222 5

Price POA

This is offered as a kitset for any builder and we can also arrange a builder in a few locations.

Vessel Type: High Speed Aluminium Catamaran for coastal service, round bilge "semi-swath" hull form incorporating bulbous bows

Survey and Classification

The vessel shall be classed Det Norske Veritas (DNV) with the notation +1A1 HSLC R3 Passenger, EO, shall comply with the requirement of Australian Survey NSCV 1B

Principal Data

LOA: 39.6m

LOP: 38.9m

Beam: 11m

Draft: 1.4m

Construction: Marine Grade Aluminium

Main Engine: 2x MTU 16V 400M70; 2320kW @2000rpm

Gearbox: 2x ZF754 4.208:1

Propulsion: CPP VD830E 4 Blade

Auxiliary: 2x Cummins 6CTA 8.3D(M) 151kW

Fuel: 2x 5000 litres

Freshwater: 2000 litres

Speed: 36 knots

Passenger: 324 + 121 upper deck

Crew: 6

Structure

Materials (to be inspected as required by Survey Authority and Owners Representative): Sheet and Plate – Grade 5083 – H321, H116, 5086-H32

Extrusion – Grade 6061-T6, 6082-T5, Filler Wire – Grade 5356, Castings – Grade CC601-T1

All welders to be approved by the Survey Authority

Outfit and Finishing

The vessel shall be laid out as per the general arrangement drawings and all fittings and equipment required for the operation of the vessel shall be supplied

Layout:

Main Deck: Internal Seating for 324, Kiosk 10.6m², 6 Toilets (one disabled with shower), External Seating for 72, 12x6 seat + table, Luggage racks.

Upper Deck: Wheelhouse, Captain's Cabin, Crew dayroom, Internal seating 121

Seating: External: Rae Line Skipper Elite coastal

Internal: Rae Line Skipper Challenger

Fit Out

Floors: Entry, Toilet, Kiosk, WHS: "Aquadeck"

Forward Passenger Space: 100% Wool Carpet

External Decks: Non-skid paint

Linings: Sides: Aluminium honeycomb panels (Ayr-lite)

Bulkheads: Aluminium honeycomb panels (Ayr-lite)

Deckhead: "Luxalon" perforated aluminium

Air Conditioning System

System is based on a water-cooled compressor unit linked up to a multiple number of fan coil units. Design of the system shall be based upon an ambient operating temperature of 35 degree Celsius (90% RH) and sea water of 32 degree Celsius. Crew and passenger spaces to be cooled to 21 degree Celsius (50% RH)

Navigation and Communication Equipment

Furuno Model 1510 15" Radar with 6ft antenna 15 metre cable ARP17 Plotter GCY8 Gyro converter

JMC 1400 Dual frequency sounder 50/200 1kw

JMC NP-30NT with GPS Antenna

Icom-IC M700 complete with tuner and Bantenn HF antenna

Icom IC-M502 VHF Radio with Bantenn Antenna

Sailor C2906 Inmarsat C VMS unit

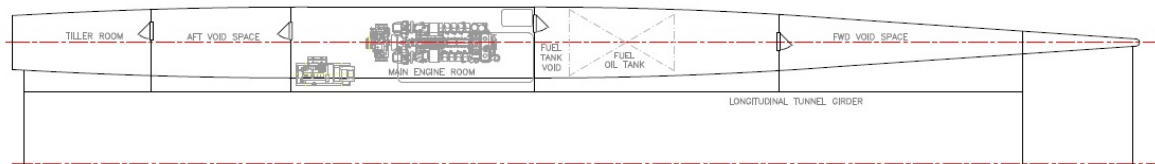
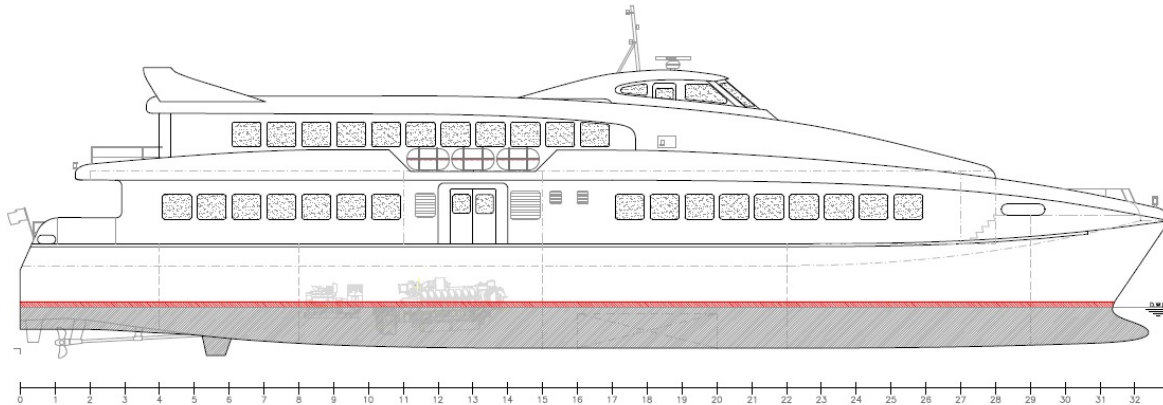
KVH Trac phone Inmarsat M

Navicontrol Autopilot 3003 Gold with second station

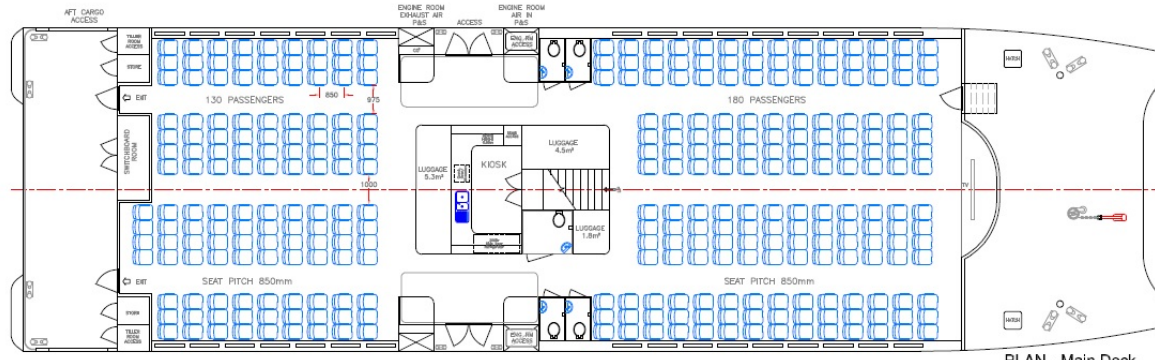
Cetrek "Poseidon" compass

Den Haan DHR CS-220 Searchlight

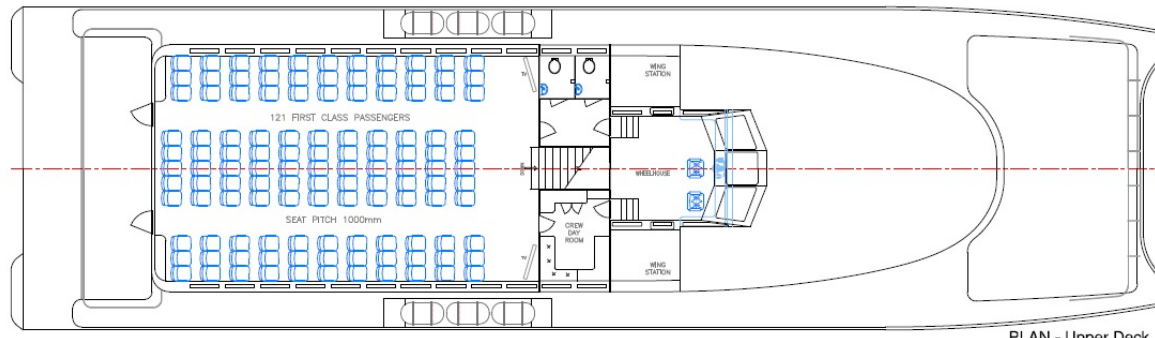
Closed circuit Tv monitoring of engine room and main deck. All navigation equipment interfaced to bridge displays



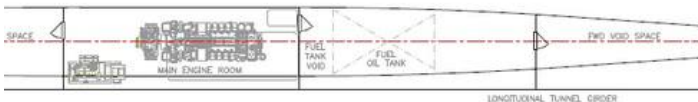
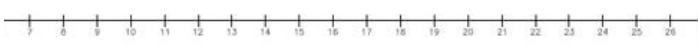
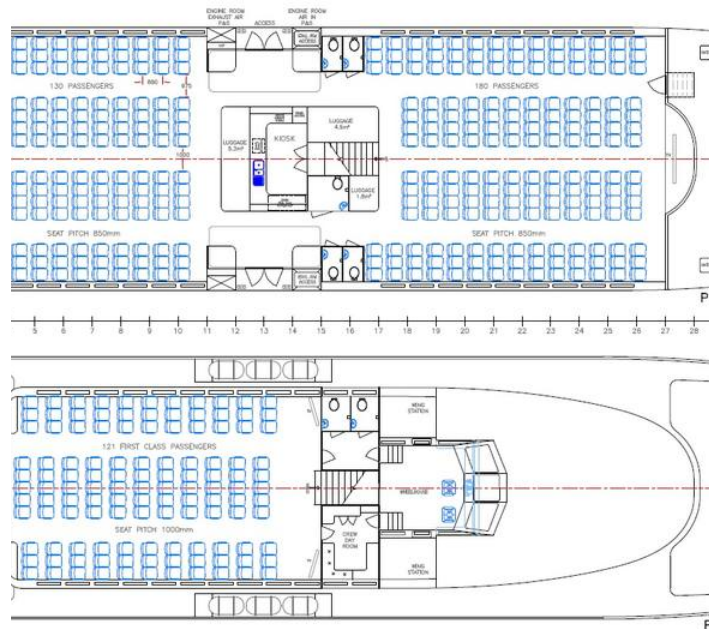
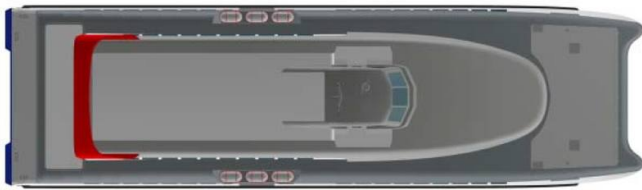
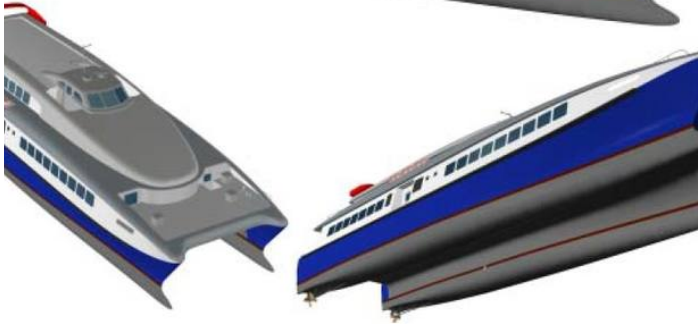
PLAN - Demi hull



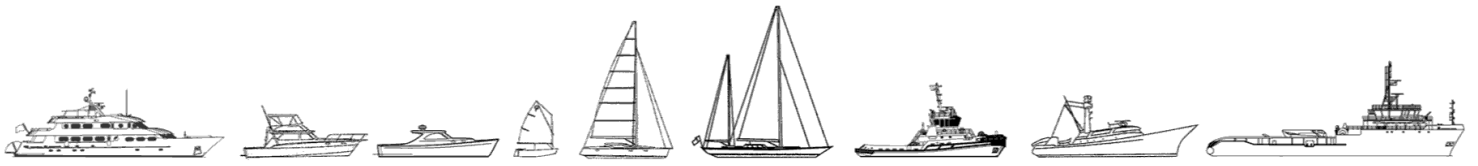
PLAN - Main Deck



PLAN - Upper Deck



The details of all vessels are offered in good faith but we cannot guarantee or warrant the accuracy of this information nor warrant the condition of the vessel. Any buyer should instruct their agents, or their surveyors, to investigate such details as the buyer desires validated. This vessel is offered subject to sale, price change, location or withdrawal without notice.



AUSTRALIA - BULGARIA - INDIA - INDONESIA - ITALY - MALAYSIA - NEW ZEALAND - PANAMA - PHILIPPINES - SINGAPORE - SPAIN - UK - USA - VENEZUELA - VIETNAM