



# SEABOATS

MARINE BROKERS WITH A GLOBAL APPROACH

AUSTRALIA - BULGARIA - INDIA - INDONESIA - ITALY - MALAYSIA - NEW ZEALAND - PANAMA - PHILIPPINES - SINGAPORE - SPAIN - UK - USA - VENEZUELA - VIETNAM

[sales@seaboats.net](mailto:sales@seaboats.net)

[www.seaboats.net](http://www.seaboats.net)

## 54m DP2 Diesel Electric OSV.



### Listing ID - 1990

<b>Description</b>	54m DP2 Diesel Electric
<b>Date Launched</b>	2016
<b>Length</b>	53.85m (176ft 8in)
<b>Beam</b>	11.30m (37ft)
<b>Draft</b>	2.8m (9ft 2in)
<b>Location</b>	Western Australia
<b>Broker</b>	Richard Pierrepont <a href="mailto:richard.pierrepont@seaboatsbrokers.com">richard.pierrepont@seaboatsbrokers.com</a> +44 7798 607 323
<b>Price</b>	USD \$10M
<b>Price Notes</b>	Charter – TBA, prefer long term bareboat

### Overview

Fuel Efficient - Diesel Electric  
Shallow Draft  
Dynamic Positioning  
2 x Deck Cranes (AHC/Man Ride)  
4 Point Mooring System  
POB - 40 Berth  
Dual Moon Pools  
Green Passport Compliant  
Removable Bulwarks  
ICCP & ICAF System  
+1A Offshore Service Vessel, COMF(v-2), DPS(2) EO VIBR

## **General**

Built 2016, Netherlands  
Steel Mono Hull  
Australian Flagged  
DNV-GL Class  
902 GT / 275 NT  
LOA: 53.85m  
Breadth: 11.30m  
Average Draft: 2.8m  
Useable Deck Area: 250m<sup>2</sup>  
Deck Strength: 7.5t / m<sup>2</sup>

## **Technical Data**

### **Bridge**

Electronic Chart Display System, (ECDIS)  
Sailor 622 & 6248 VHF communications  
Sailor 6301 HF Communications  
Sailor 6006 INMARSAT C  
VSAT Fitted

### **Dynamic Positioning**

Praxis MEGA GUARD DP System  
2 x Fugro Seastar 9205 DGPS  
1 x Sonardyne Marksman USBL, (Fitted Stbd Moonpool)  
1 x MEGA - GUARD E Series Taut Wire  
4 x Sonardyne Ranger DPT Acoustic Beacons

### **Deck**

1 x Aft Knuckle Boom 20t@6.5m, 11.5t@15.1m, AHC /CT/ Man Ride  
1 x Fwd Knuckle Boom 13.6t@6.3m, 4.45t@15.3m  
4 point mooring, 600m x 30mm SWR, w/Delta Flipper anchors  
Two Moon Pools @ 1.2m Diameter each  
Stern Roller 6m x 0.9m  
Removable Bulwark sections, 2 x 3.5m sections

### **Power Generation**

6 x D13 Volvo Penta Generators @ 420kW each  
2 x D9 Volvo Penta @ 260 kW each (Emergency & Harbour Gen Set)

### **Propulsion**

2 x Aft Azipod 650kW each  
1x Bow Tunnel Thruster 400kW  
1x Bow Swing Down Azipod 650kW

### **Speed**

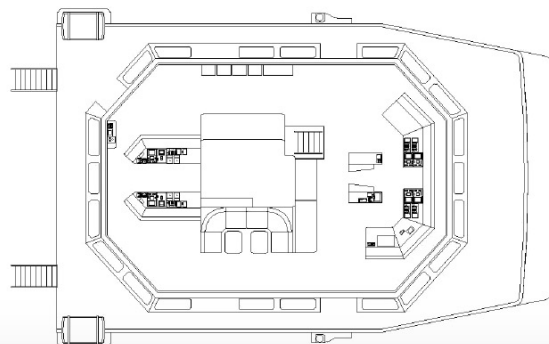
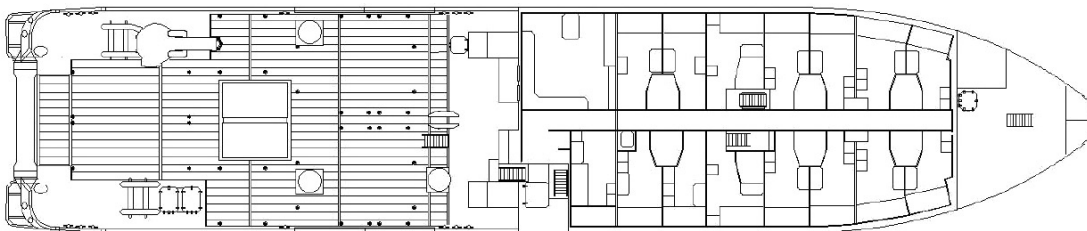
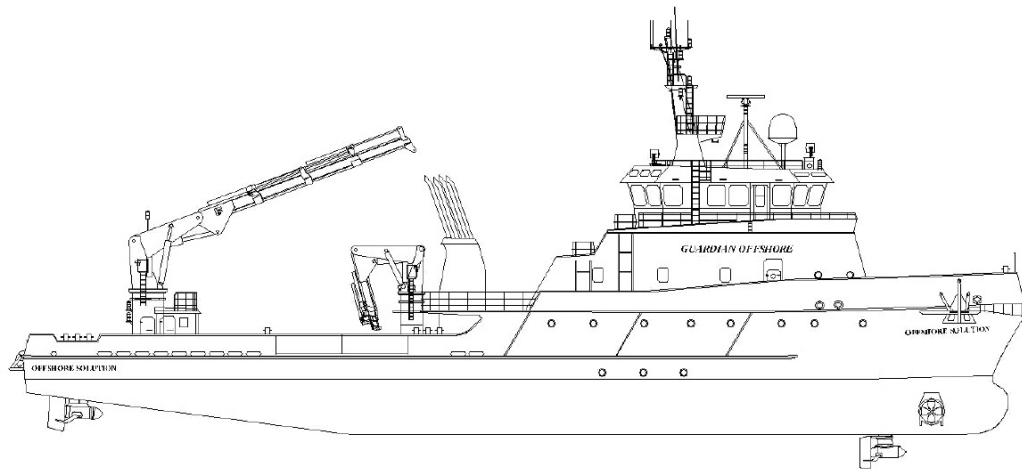
14 knots maximum  
11 knots Economical

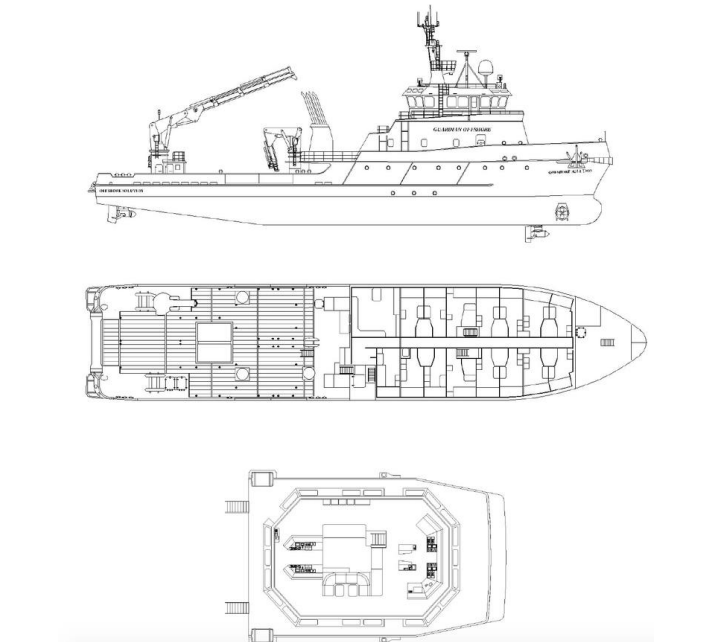
### **Tank Capacity**

120m<sup>3</sup> MGO  
150m<sup>3</sup> Ballast Water  
70m<sup>3</sup> Potable Water

**Accommodation / Office**

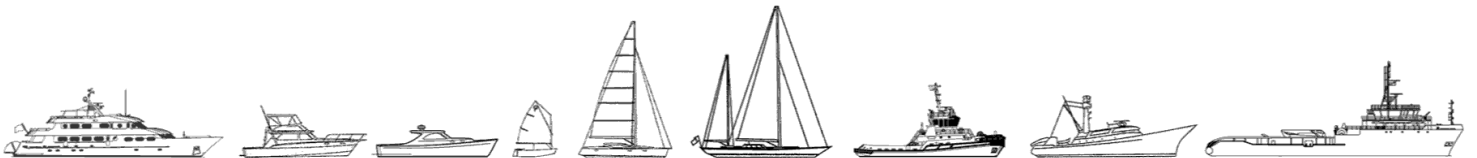
- Crew 2x1 & 5x2 berth
- Client 14x2 berth
- 1 Dedicated First Aid Treatment Room
- 1 Client Office
- 1 Survey Office







The details of all vessels are offered in good faith but we cannot guarantee or warrant the accuracy of this information nor warrant the condition of the vessel. Any buyer should instruct their agents, or their surveyors, to investigate such details as the buyer desires validated. This vessel is offered subject to sale, price change, location or withdrawal without notice.



AUSTRALIA - BULGARIA - INDIA - INDONESIA - ITALY - MALAYSIA - NEW ZEALAND - PANAMA - PHILIPPINES - SINGAPORE - SPAIN - UK - USA - VENEZUELA - VIETNAM