



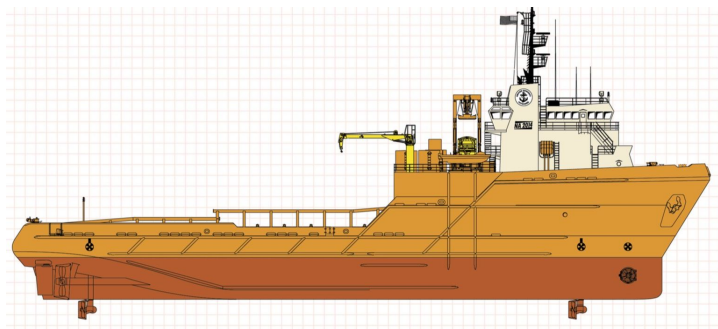
SEABOATS

MARINE BROKERS WITH A GLOBAL APPROACH

AUSTRALIA - BULGARIA - INDIA - INDONESIA - ITALY - MALAYSIA - NEW ZEALAND - PANAMA - PHILIPPINES - SINGAPORE - SPAIN - UK - USA - VENEZUELA - VIETNAM

sales@seaboats.net - www.seaboats.net

260ft Anchor Handling Vessel



Listing ID - 2182

Description 260ft Anchor Handling Vessel

Date 1998

Launched

Length 79.25m (260ft)

Beam 17.68m (58ft)

Broker John Kearns
john.kearns@seaboatsbrokers.com
+64 21 400 805

REGISTRATION

Hull: 163

Vessel Type: Anchor Handling Supply Vessel

Year Built: 1998

Shipyard: North American Shipbuilding

DIMENSIONS

Dimensions: 260 ft. X 58 ft. X 24 ft. (79.25 m X 17.68 m X 7.32 m)

Draft (Normal Operation): 17 ft. (5.18 m)

Draft (Minimum Operation): 13 ft. (3.96 m)

Draft (Loadline): 20 ft. 2 in. (6.15 m)

Clear Deck: 136 ft. 3 in. x 48 ft. (41.53 m x 14.63 m)

Cargo Deck Area: 6,540 sq. ft. (607.59 sq. m)

Deck Cargo Capacity: 1,175 LT @ 3 ft. VCG (1,193.86 MT @ 0.91 m VCG)

Deadweight (Loadline Draft): 3,056 LT (3,105.04 MT)

CAPACITIES

Fuel Oil: 367,442 gals. (1,390.92 cu. m)

Ballast: 330,139 gals. (1,249.71 cu. m)
Potable Water: 32,576 gals. (123.31 cu. m)
Dry Bulk: 11,250 cu. ft. @ 80 psi (318.57 cu. m @ 5.5 bars)
Liquid Mud (Dual Tank System): 4,320 barrels (686.83 cu. m)

MACHINERY

Main Engines: Two (2) 3612 CAT Diesels, 11,400 BHP
Propulsion: Two (2) x 3,400 mm dia. C.P. in nozzels
Bow Thrusters: One (1) Ulstein 850 HP Tunnel
Bow Thrusters: One (1) Ulstein 1,200 HP Drop-Down Azimuthing
Stern Thrusters: One (1) Ulstein 1,200 HP Drop-Down Azimuthing
Bollard Pull: 120 MT at max draft
Speed: 14 knots
Rudders: Two (2) Spade Type, Independent Operation
Generators: Three (3) x 500 kW
Generators: One (1) 300 kW Emergency

TOWING AND ANCHOR HANDLING (DECK EQUIPMENT)

Winches: Brattvaag double drum SL500 Waterfall, 500 MT or 1,102,500 lbs. or 1,102 KIPS per drum
Chain Lockers: Two (2) x 5,425 ft. x 3-1/4 in. (1,653.54 m x 0.99 m) ea.
Storage Reels: Two (2) x 6,500 ft. of 3-3/4 in. (1,981.2 m of 1.14 m) wire ea.
Wire Capacity: Two (2) x 6,500 ft. of 3-3/4 in. (1,981.2 m of 1.14 m) wire @ 500 MT

SPECIAL FEATURES

Shark Jaws: Two (2) Sets Triplex 350 T (317.52 MT)
Synthetic Rope Shark Jaws: One (1) x 175 tons (158.76 MT)
Tow Pins: Two (2) Sets 300 T (272.16 MT)
Tuggers: Two (2) x 15 tons (13.61 MT)
Tuggers: Two (2) x 7.5 tons (6.8 MT)
Ship Motion: Two (2) Passive Type Anti-Roll Tanks
Ship Motion: Bilge Keels
Positioning: DP 2
Stern Rollers: One (1) 9 ft. (2.74 m) dia
Cranes: Two (2) x 5-ton Capacity
VSAT Domes: Internet and Television Dome
Oil Dispersant System: Two (2) Oily Water Separators
Sewage Treatment System
Thru Hull ROV Transducer Pole

ROV

ROV Deck

LIFE SAVING EQUIPMENT

Life Rafts: Six (6) x 20-Man Inflatable Life Rafts
Life Rings: 8 x Life Rings
Rescue Boat/Craft: One (1) x Fast RSQ-450
Other gear as required by authorities

ELECTRONICS

Electronics Package: Two (2) Furuno FAR 2xx7 Radars, Furuno GP-150, Glonass and C-Nav 3050, Standard Horizon VHF/FM Radio, Two (2) Seacall 7156 VHF/FM Radios, Two (2) Seacall 7100 VHF DSC Controllers, Sea 330 HF/SSB Radio, Seacall 7000 MF/HF DSC Controllers, Seawatch 7001 MF/HF Watch Receiver, Sailor R501 Watch Receiver, Necode LPWDSC 1000 DSC Encoder, JRC JUE-75C Inmarsat-C, Three (3) ICOM IC GM1600 VHF Survival Radio, Three (3) Jobcom JMX 444 Handheld FM Radios, Seatel Wavecall 2100R Satellite Telephone, ACR Satellite 406 EPIRB, JRC NCR-300A Navtex Receiver, Furuno F700, Standard Horizon HX2508 VHF Handheld Radio, Apple Power Mac 7600/132 Ship's Computer, Anschutz Standard 20 Digital Gyrocompass, Three (3) Anschutz BSH/46/33G/94 Compass Repeaters, Two (2) Raytheon-Anschutz Compass Stand Repeaters, Marine Technologies Dynamic Positioning System (DP 2)

CLASSIFICATION

ABS: Star A-1 Unrestricted Ocean Services

ABS: Star AMS

ABS: Circle E

ABS: DP 2

USCG: Subchapter L (Industrial Vessel)

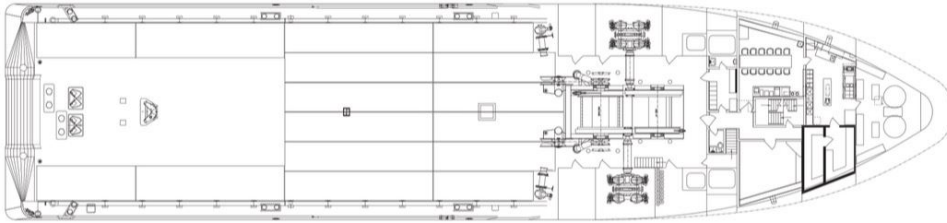
OPA: 1990

SOLAS: 1993

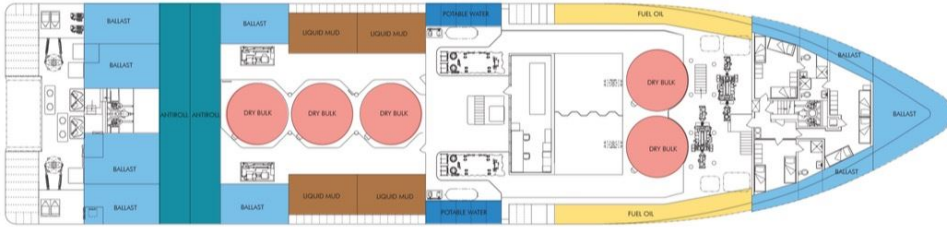
MARPOL: 1973/1978/1992

ACCOMMODATIONS

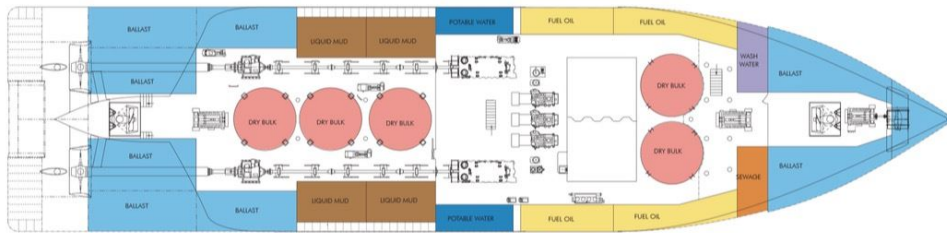
Accommodations: 39



MAIN DECK



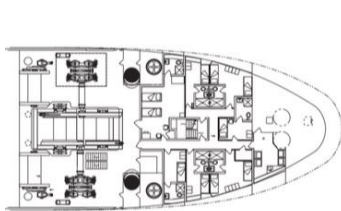
LOWER DECK



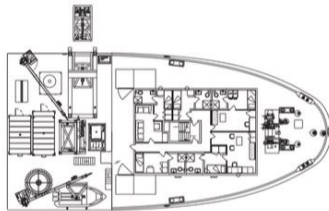
ABOVE TANK TOP



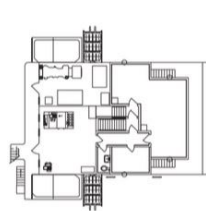
BELOW TANK TOP



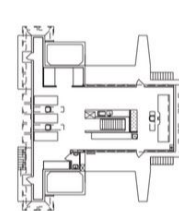
UPPER DECK 01



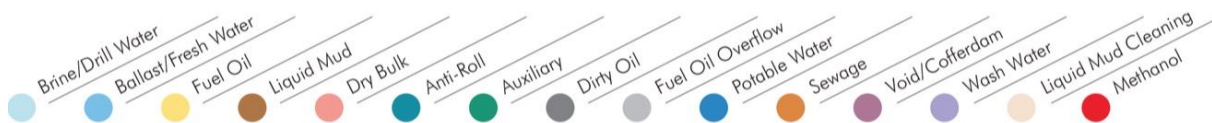
UPPER DECK 02

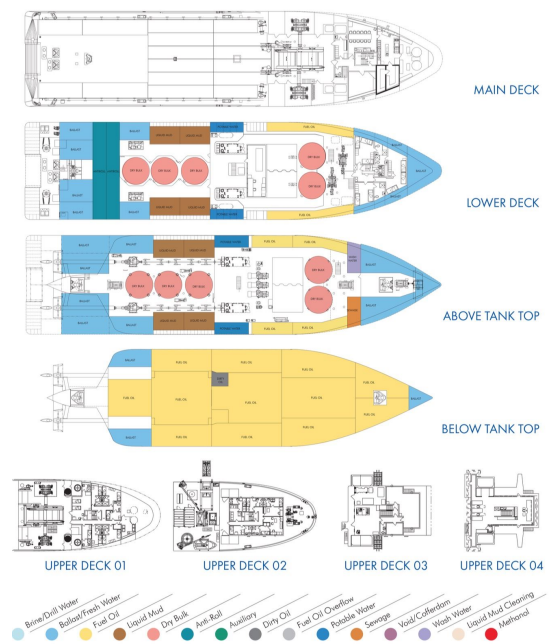
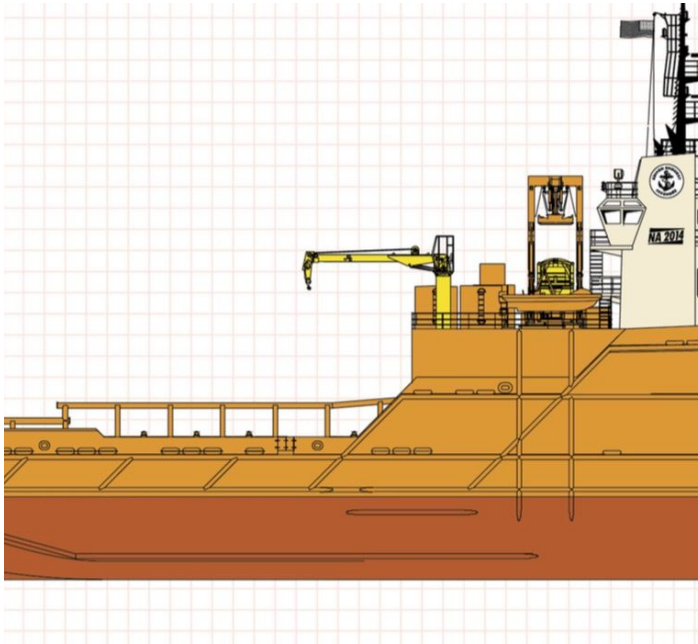


UPPER DECK 03

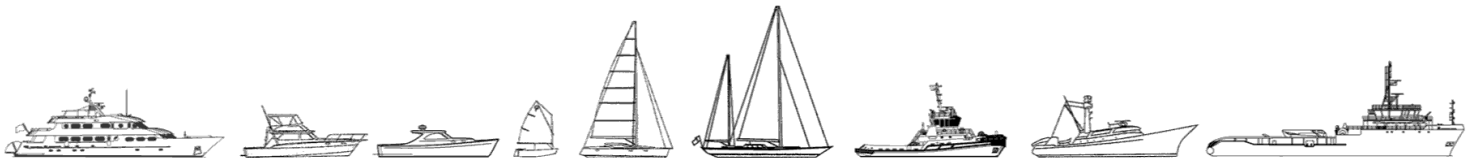


UPPER DECK 04





The details of all vessels are offered in good faith but we cannot guarantee or warrant the accuracy of this information nor warrant the condition of the vessel. Any buyer should instruct their agents, or their surveyors, to investigate such details as the buyer desires validated. This vessel is offered subject to sale, price change, location or withdrawal without notice.



AUSTRALIA - BULGARIA - INDIA - INDONESIA - ITALY - MALAYSIA - NEW ZEALAND - PANAMA - PHILIPPINES - SINGAPORE - SPAIN - UK - USA - VENEZUELA - VIETNAM