



# SEABOATS

MARINE BROKERS WITH A GLOBAL APPROACH

AUSTRALIA - BULGARIA - INDIA - INDONESIA - ITALY - MALAYSIA - NEW ZEALAND - PANAMA - PHILIPPINES - SINGAPORE - SPAIN - UK - USA - VENEZUELA - VIETNAM

[sales@seaboats.net](mailto:sales@seaboats.net) - [www.seaboats.net](http://www.seaboats.net)

## 17m General Service Workboat Available for Sale & Charter.



### Listing ID - 2196

<b>Description</b>	<b>17m General Service Workboat Available for Sale and Charter</b>
<b>Date Launched</b>	2018
<b>Length</b>	16.80m (55ft)
<b>Beam</b>	4.80m (15ft 8in)
<b>Draft</b>	1.43m (4ft 8in)
<b>Location</b>	ex shipyard, Turkey
<b>Broker</b>	Giuseppe Filippone
<b>Price</b>	USD 1.3m

This new, compact and powerful workboat has been designed by Macduff Ship Design Ltd (Scotland) and is outfitted for a number of harbor duties : towing, berthing, fire-fighting operations.

Classified by BV (Class Notation I, +Hull, \*Mach, Launch) this workboat has a bollard pull of 10T. and 12 knots service speed.

Complete e very comfortable accommodation for 4 crew members.

### DIMENSIONS

- 16,8m Length Over All (LOA)
- 15,95m Length BP
- 4,8m Breadth
- 2,125m Depth
- 1,436m Draught (Max)

### TANK CAPACITIES

- Fuel Fuel: 5284 lt
- Fresh Water Fresh Water: 370 lt
- Sewage Sewage: 848 lt

## **MACHINERY**

- Main Engines 2 X Yanmar 6AYM-WET 555bkW@1840rpm, Heavy Duty Raiting
- Generator 2 X CAT C4.4, 44ekW, 440V/60Hz
- Fire & Bilge Pumps 2x30m3/h@2,5bar
- Emergency Fire Pump Moto pump 420lt/min-2bar max with 7lt fuel tank
- Fuel Transfer Pump 6,9m3/h@1,2bar
- FW Pump Dometic 24V-17lt/min
- Sewage Pump 6,9m3/h@1,2bar
- External Fire Pumps 1pc. 60m3/h@7,0bar, 2 x deck mounted manual fire monitors

## **DECK MACHINERY**

- Towing Winch & Windlass : 50kN nominal pull, 10m/min speed, combined on fwd deck
- Towing Hook : 10ton SWL Mampaey Disc Type
- Deck Crane : 25,8kNm-5m outreach
- Bow Thruster : 320kg Thrust ,280bar Hydraulic
- Fairleads : 2x 8ton SWL multi-angle fairleads at bow and aft
- HPP : Hydraulic power pack for all deck machinary

## **ACCOMMODATION**

- Air Condition : 60.000 Btu Dometic chilled Water A/C system for wheelhouse, mess room and cabin
- Accommodation: Out tted to the highest standards air-conditioned for 4 persons, consisting of 1x4 man cabin, mess room & galley and sanitary facilities.

## **FIRE & SAFETY**

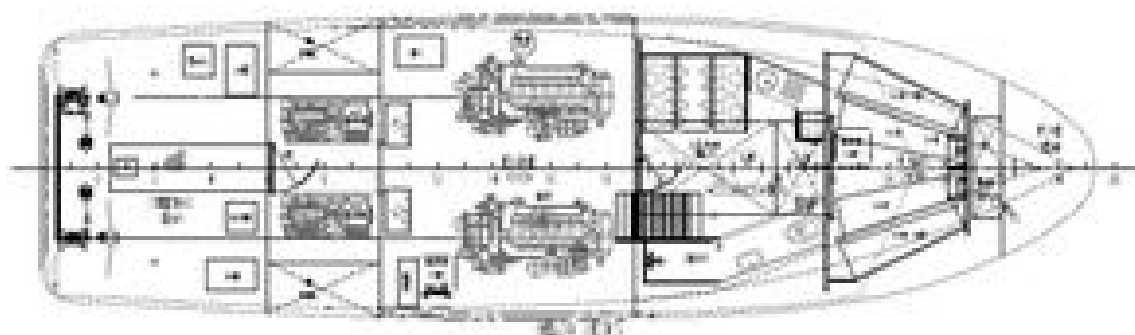
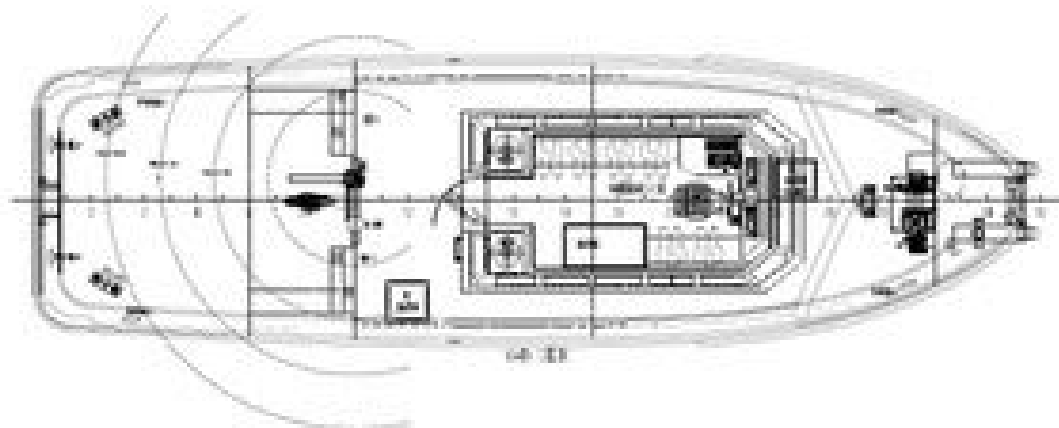
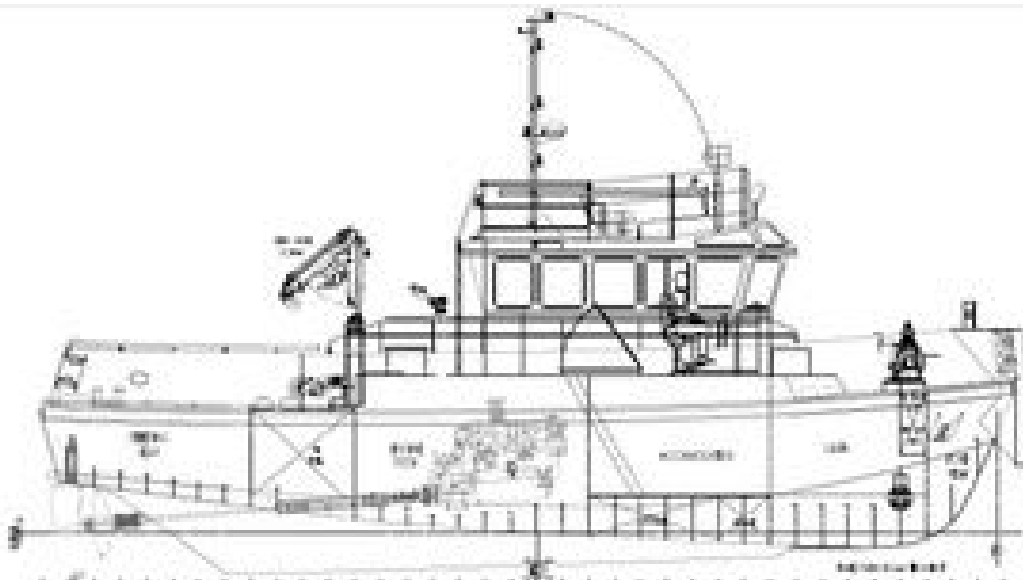
- 1 x 8 man Inflatable Life Raft
- Fire Detection and Alarm System
- Deck Fire Monitors for external fire-fighting operations

## **NAVCOM**

The bridge is equipped with extensive nautical and communication equipment according to GMDSS Area A1

- Radar Simrad 4G BroadBand
- GPS Simrad GN70
- GPS Compass Simrad HS60
- Wind Indicator Navico 508
- Echo Sounder & Speed Navico B744V
- Magnetic Compass Plastimo 135 table top
- VHF Sailor 6222 DSC Class A
- VHF Handheld 2xSimrad HH36
- Navtex Sailor 6391

- AIS Simrad NAIS-400
- Sart 1xSimrad SA50
- Epirb 1xSimrad EG70
- Talk Back Internal comm. between wheelhouse, mess room, E/R and outside
- Search Light 1X500W hand operated from wheelhouse

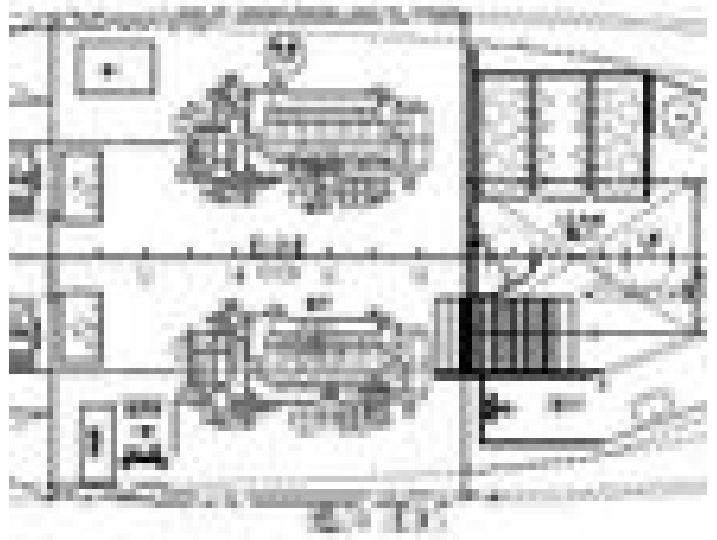
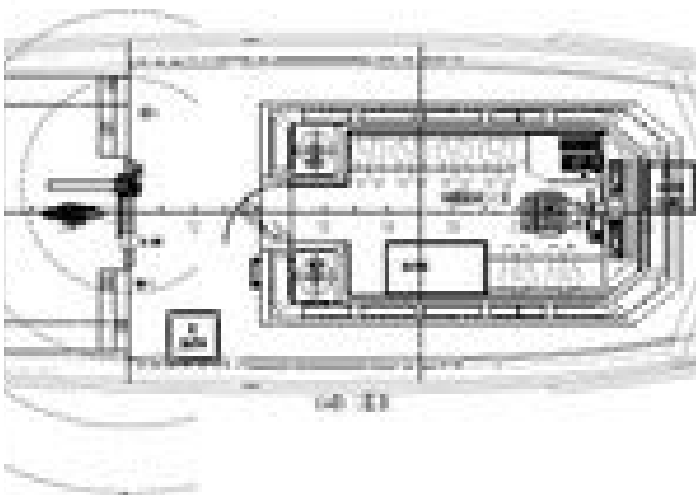
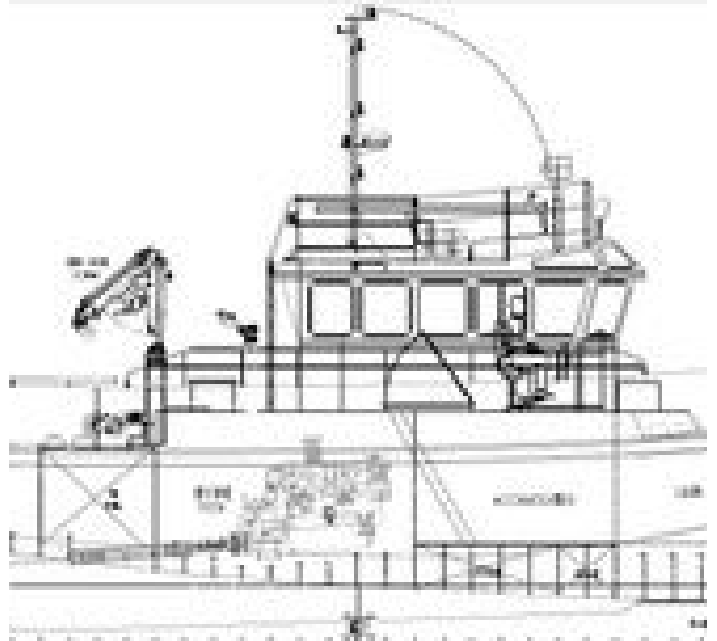












The details of all vessels are offered in good faith but we cannot guarantee or warrant the accuracy of this information nor warrant the condition of the vessel. Any buyer should instruct their agents, or their surveyors, to investigate such details as the buyer desires validated. This vessel is offered subject to sale, price change, location or withdrawal without notice.

