



# SEABOATS

MARINE BROKERS WITH A GLOBAL APPROACH

AUSTRALIA - BULGARIA - INDIA - INDONESIA - ITALY - MALAYSIA - NEW ZEALAND - PANAMA - PHILIPPINES - SINGAPORE - SPAIN - UK - USA - VENEZUELA - VIETNAM

[sales@seaboats.net](mailto:sales@seaboats.net) - [www.seaboats.net](http://www.seaboats.net)

## NEW BUILD - 12m Pilot Boat



### Listing ID - 2253

**Description** NEW BUILD - 12m Pilot Boat

**Date Launched** Built to Order

**Length** 13.30m (43ft 7in)

**Beam** 4.1m (13ft 5in)

**Draft** 0.85 metres prop/shaft or 0.60 metres water jet

**Location** ex Shipyard, Mexico

**Broker** Reynaldo Gil  
[reynaldo.gil@seaboatsbrokers.com](mailto:reynaldo.gil@seaboatsbrokers.com)  
+58 414 243 4966

**Price** POA

### OVERVIEW

The plans and specifications are prepared with the intent to set forth the work to be executed and items to be supplied for the construction of a vessel suitable for commercial Pilot vessel operation. In all cases where contradiction exists between the plans and specifications, the specifications shall govern unless mutually agreed with the owner or owners authorized agent and the builder.

### PRINCIPAL DIMENSIONS

#### 2.1 HULL DIMENSIONS

Length (LOA): 13.30 metres

Length (LWL): 11.30 metres

Beam: 4.10 metres

Draft: 0.85 metres prop/shaft or 0.60 metres water jet

## **2.2 POWERING**

### **Engines:**

2 of Cummins QSC 8.3, 368kw @ 2600RPM, Marine Diesel Engines -, 4 stroke.

Marine Transmission: ZF 286 with mounts and gauges and oil cooler for Jet drive or zf325IV for prop/shaft drive.

(Alternative 2 x Cummins QSB 6.7L, 224kw)

## **2.3 PROPULSION**

2 of s/steel Aquamet or similar shafts with poly flex couplings.

The vessel will be fitted with two nickel aluminium bronze bladed propellers.

Water Jet version: Hamilton HJ292 or equivalent.

## **2.4 SPEED**

Lightship speed (approx) 32 knots 2.5t dwt, 38 knots ( water jets )

Loaded cruise speed (approx) 25 knots @ 85%

Loiter speed (approx) 4 knots

Range 190 NM (prop/shaft version)

## **2.5 TANK CAPACITIES**

Fuel Oil (2) TOTAL 1140LTR

Fresh Water 1 OF 180LTR

Sullage 1 OF 180LTR

## **2.6 DISPLACEMENT AND LOADING**

Lightship (Approx) TBC Tonne

Loaded Displacement (Approx) TBC Tonne

Typical Load Deadweight (Approx) TBC Tonne

Principal particulars are subject to slight changes according to the results of stability and trim prognosis regarding the final fit-out arrangement.

## **VESSEL SPECIFICATION**

### **3.1 GENERAL**

The vessel shall be designed and constructed to an equivalence of the DNV R2 or ABS code for open waterway passenger vessels. In all cases where contradiction exists between the plans and specifications, the specifications shall govern unless mutually agreed with the owner or owners authorized agent and the builder

Complete plans and specifications shall be submitted to owners flag state maritime division if required and authorized Class surveyor shall inspect the vessel during construction at regular intervals. Vessel to be constructed under cover in secure premises and builder to maintain insurance with marine insurance, with owners listed on policy until handover.

### **3.2 ALUMINIUM STRUCTURAL**

All aluminium is to be of certified marine grade and class approved standard. (Plate 5083 H116 & extrusion 6061 T6) or equivalent. Welding shall to be carried out by suitably certified welders in accordance with the supplied weld schedule. The approved welding schedule shall be used during construction in all cases.

### **3.3 STRUCTURAL SCANTLINGS**

All scantlings are well above the requirements to allow operation at very safe levels in all conditions. Below is a list of main structural plate sizes:

Hull bottom plate 5 mm plate (TBC)

Hull side plate 5 mm plate (TBC)

Deckhouse plate 3 & 4 mm plate

Deck plate 3 & 4mm plate

All construction materials shall be class approved with certificates.

All additional scantlings are as shown in the complete plan package and are available for sighting prior to signing of the final contract. Scantlings and structural arrangement shall be of such type so as to secure a safe level of operation in addition to allowing for a maximized operational life.

All openings in the hull and deck for scuppers, sea valves, hatches etc. shall be radiused. Suitable under deck stiffeners shall be provided in way of bollards, winches, etc.

The vessel shall be transversely framed throughout in addition to suitable longitudinal stiffeners. The hull shall be subdivided into four separate watertight compartments by way of suitably stiffened watertight bulkheads.

### **3.4 DECKHOUSE**

All deckhouse structure shall be of marine grade aluminum. All windows shall be toughened safety glass 8mm forward, 6mm side, 6mm aft' sizes to be maximized. The forward facing windows shall be clear within the restraints of the window deflections. Clear "fixed" type of a suitable size for navigation purposes, two helm slider windows shall be properly framed with approved heavy-duty aluminum framing the remainder to be approved "stick-on type" with ceramic bands and using Sikaflex approved 296 sealant.

Passenger/crew access to the vessel main deck is via a hinged doors on port and stb side aft' bulwarks. Passenger doors to be wide enough to accommodate passengers with hand luggage and a small loading trolley. Crew boarding access to foredeck via gate at forward end of bow. Refer to general arrangement plan for proposed accommodation space layout arrangement. Hatches by Freeman Marine.

### **3.5 DECK SPECIFICATIONS**

#### **MAIN DECK**

Passenger seating as per final general arrangement plan, with high back marine seating with armrest and life jacket holders under. One (1) x toilet installed forward.

### **3.6 DECK COVERINGS**

Weather Decks Non –Skid Paint

Passenger Decks Non – Skid Paint or 'Decord' marine carpet

Toilets internal Non – Skid Paint

### **3.7 INTERNAL BULKHEAD LININGS**

Main Cabin Honeycomb panel laminated (fire rated)

Toilets internal High gloss paint

### **3.8 DECK HEAD FINISH**

Main Cabin & helm Honeycomb panel laminated (fire rated)

Toilets Honeycomb panel laminated (fire rated)

Outside Deck heads High gloss paint.

### **3.9 HATCHES**

Freeman deck hatches to be provided of watertight standard to all compartments and decks. The flush main engine room hatches shall be drained and will have provision for engine access and removal. Main engine hatches to be hinged with gas struts for easy access. Alternative access to the engine room is via alternative hatch. Access to the mid-voids shall be via flush hatches. The foredeck compartment hatches shall be Freeman hatches.

### **3.10 GROUND GEAR**

Ground gear: 2 x 20 kg approved plough anchors plus 1 x 10 metres of 8mm short link chain with 125 metres x 16mm poly rope. All ground gear shall be in accordance with requirements.

### **3.11 WINDLASS**

Optional

### **3.12 P.A. SYSTEM**

Public address system will be a 'Fusion' 12v marine stereo with PA function and microphone provided in wheelhouse. Interior 'Fusion' speakers to be flush mounted to ceiling.

Interior speakers are to be provided at the following locations:

Helm

Passenger saloon.

External areas.

Individual volume control to be provided at helm.

All exterior mounted speakers will be waterproof.

Loudspeaker for forward deck

Loudspeaker for aft deck

### **3.13 INTERCOM SYSTEM**

NOT Applicable as engine room unmanned.

### **3.14 PASSENGER CABIN VIDEO SYSTEM**

Optional.

### **3.15 FENDERING**

45 mm EVA Foam coated with 4 mm Elastomeric Polyurethane. External diameter 550 mm

### **3.16 PAINT SYSTEM**

The paint system shall be of high standard marine type. The paint system shall be "Jotun" two pack high build epoxy undercoat with two pack polyurethane finish in order to avoid operational damages and extend the overall vessel life. All Aluminium is to be cleaned and degreased. The first coat of paint system to be applied within 8 hours.

Hull underwater to be coated with Jotun anti-fouling system suitable for area of operation. Colour schedule to suit owner's requirements.

Main exterior structure: To be buffed, undercoated and coated with two pack polyurethane 'Jotun' to the manufacturer's specifications.

Hull topsides: To be buffed, undercoated and coated with two pack polyurethane 'Jotun' to the manufacturer's specifications.

Decks: Exterior weather decks (non carpeted) to be coated with two-pack paint system (non skid) to the manufacturer's specifications.

Interiors and deck heads: Exposed structure below window sills, exposed seating structure surfaces, window mullions all to be coated with two-pack paint and coving system to the manufacturer's specifications. Interior compression posts shall be aluminium buffed.

Vessel's name and insignia: Shall be applied to the port and starboard and also on the transom with the port of registry (transom name and port of registry to cut from plate and welded prior to painting. Owners sign writer shall supply and fit all exterior artwork.

Draft marks: Shall to be painted on bow and stern. The vessels number and net tonnage shall be center punched on the hull in way of a bulkhead.

Signs: Signs for crew and passenger safety information, valves, vents, fuel lines etc. will be fitted as required by the survey authority and the owners. The builder will fit no smoking signs and life jacket signs throughout the cabin as required.

### **3.17 BOLLARDS & MOORING LINES**

Six (6) of fabricated aluminium cleats to be provided suitably arranged to enable safe berthing.

All cleats will be cast 300mm from aluminium and will be through welded to the deck insert plates. The cleats will be designed to suit minimum 20mm diameter rope. The position and type of bollards, fairleads and cleats are to be specifically agreed to before installation by the owner.

The builder will supply three mooring lines, each 16 mm diameter polypropylene rope, 12 metres in length.

One aluminium boat hook will be supplied with securing arrangements.

### **3.18 HAND RAILS**

32 mm aluminum tube hand rails to be provided in way of all passenger space. Rails at not less than 300 mm longitudinal spacing with the lowest handrail course to be not

less than 230 mm. Rail. Grab rails to be fitted around upper bulwark sides to allow crew support. Rail heights shall be in accordance with the requirement with the uniform shipping laws code. Rails on helideck can be lowered flat.

### **3.19 ANODES**

Cathodic protection to be provided in accordance with the requirements of regulations for cathodic protection of aluminum vessels and to consist of no less than 2 (two) separately located flush mounted zinc anodes.

### **3.20 NAVIGATION LIGHTS**

The vessel is to be fitted with a complete set of navigation lights in accordance with the requirements of the international preventing of collision at sea regulations. 'Lalizas' seven (7) lights included.

### **3.21 PASSENGER SEATING**

Seating arrangement on main deck shall be provided in accordance with the General Arrangement Plan.

Interior seating in the main cabin shall be 6 x medium back cushioned marine seats with armrest and life jacket backs under.

### **3.22 ACCOMMODATION AREAS**

Refer to general arrangement plan for proposed accommodation space layout arrangement. Optional- 40L combination fridge freezer and galley sink, with mounted microwave.

### **3.23 HELM & ELECTRONIC EQUIPMENT**

HELM & ELECTRONIC EQUIPMENT SHALL INCLUDE

1 x JMA-3334 Radar NON-SOLAS CAT3 <500GT

1 x SI-TEX SAS-600 CLASS B/SO AIS TRANSCEIVER

1 x SI-TEX SAS-600 CLASS B/SO AIS TRANSCEIVER

1 x Ritchie RA-91 Ritchie Angler Compass

1 x Furuno FCV628 5.7" Fishfinder w/RezBoost

- 1 x Marine VHF radiotelephone JHS-800S
- 1 x VHF ICOM M330
- 1 x FURUNO LH5000 30 Watt Loudhailer with LCD
- 1 x Guest 22040A 5" Spotlight / Floodlight Kit
- 1 x VECTOR Compact - S GPS Compass w/ NMEA-0183 Interconnect Cable
- 1 x Tron 60S EPIRB AUTO: 406 Mhz Jotron

The helm console shall include all engine instrumentation. E.g.: voltmeter, tachometer, oil and temperature gauges, engine hours and boost gauges etc. (as supplied by owners engine manufacturer)

## **LIFE SAFETY EQUIPMENT**

### **LIFEBUOYS:**

Two (2) x lifebuoys, one with salt water activated light and one with 30 metres of 8mm line, fitted with retro-reflective tape, and with the vessel's name and port clearly marked.

### **LIFEJACKETS:**

8 x SOLAS approved life jackets with whistles and lights

### **SAFETY EQUIPMENT:**

2 x electric flashlights.

1 x first aid kit.

1 x clock

1 x code flags.

1 x fire blankets

1 x hand held air compressed horn

Day signal shapes as per code.

## **ENGINEERING**

### **5.1 BILGE PUMPING ARRANGEMENT**

Bilge pumping system: Arrangement shall be in accordance with requirements. This shall be an engine powered fixed system of 2 x 11m<sup>3</sup> /h pumps (1 in each ER) and 2 x DC powered 3000GPH submersible bilge pumps with floats and compatible fittings for engine rooms as back ups with helm switch panel. The system includes one (1) of fire/deck wash attachments with hose and nozzle.

### **5.2 FUEL SYSTEM**

Fuel tanks: Two (2) of 570 L fabricated fuel tanks to be installed below the deck in tank room. The tanks shall be fully welded marine grade aluminum with aluminum fittings. (Filler pipe, inspection manhole ports, vents, etc.) Fuel oil filter model: Griffin twin filter assembly with isolation tap and water separator shall be provided. Fuel lines shall be stainless steel.

### **5.3 FRESH WATER SYSTEM**

Fresh water tanks: One (1) of 180-ltr separate fresh water tank shall be installed below deck. Fresh water pressure to toilets via Whale 24v pump.

Main Deck: One (1) off cold water taps in main deck toilet compartment.

### **5.4 W.C. FACILITIES**

Main Deck: One (1) of Marine fresh flush, 24v toilet system with thru deck alloy pipes to sullage tank.

Facilities to include wall mirror and toilet roll holders.

Sullage system shall include one (1) of 180 ltr sullage tank with shore-based pump-out stand facility.

### **5.5 FIRE SYSTEM**

Portable 4.5kg dry chemical fire extinguishers in all spaces as required meeting code.

One (1) flush mounted dual zone fire control and alarm module at helm.

Two (2) of audible and visual remote fire alarm units. (engine rooms)

Detectors and alarms in engine spaces.

2 x FM200 class approved fixed engine room fire suppression units.

2 x Manual release cables in sheaths and release boxes fitted to aft deck area for crew.

Alarm & detection package as supplied.

Hydrants

2 x engine driven fire pumps (min 11m<sup>3</sup>/ph), with 12m lay flat hose and deck camlock connection.

## **5.6 GENERATORS**

Two (2) of Cummins Onan 11.5 KW 1ph, sea water cooled gensets to be supplied and installed to provide AC power for ships AC systems and air conditioning.

## **5.7 STEERING SYSTEM**

Kobel Electro hydraulic control system with 3-axis joystick to be supplied with steering package -s/steel hydraulic lines.

## **5.8 BATTERIES**

Four (4) of 12volt 200 Ah lead acid batteries are to be supplied with bridging bank (outside engine room) for mains starting.

Two (2) of 12volt 80 Ah lead acid batteries to be supplied with bridging bank (outside engine room) for gensets starting.

The batteries are to be secured in fiberglass, acid proof boxes.

All boxes are to be properly vented.

All battery leads shall be 20 rubber insulated approved cable with disconnect switches.

The start lead cables shall be run as direct as possible.

## **5.9 ELECTRICAL SYSTEM**

AC/DC systems to be designed by approved electrical engineers and installed by certified electrical contractor in accordance with approved plans. All materials shall be

of good quality, suitable for marine use. All cables shall be in accordance with the requirements or type class approved, and to be sheathed and fixed with formed clips and screws, cable ties and cable trays as required. All cable runs shall be enclosed in oil tight flexible conduit or equivalent mechanical protection used where applicable. All cables must comply with 75 degree Celsius or better temperature rating. (Lloyds approved)

The system supplied and extent of wiring shall be as listed below:

To supply navigation lights, wiring to main engines.

Supply electrical schematics stamped and approved. Wire AC\DC equipment.

Supply 240vac ,12/24 VDC switchboards with circuit breakers installed equipment

Builder to supply and fit electronics.

Supply bilge alarms and float switches. Supply engine start batteries, radio batteries and radio battery charger, supply and fit 24-v horn and power outlets.

Supply and wire all cables necessary to make the vessel operational all above equipment.

The main isolating switch shall be of double pole-linked type. Switches and circuit breakers shall be compatible with their envisaged circuit loading. Suitable cathodic hull protection devices shall be used as required.

## **LIGHTS**

All exterior fittings (lights, etc) shall be of waterproof type. Exterior and hull light fittings shall be LED type on lower deck, and on upper deck, with two (2) in way of stairwell. The main deck cabin and companionways to have flush mounted LED down lights. At the helm one (1) LED down light. One LED in each W.C. plus engine rooms, and tank

rooms. Switching for all decks at the helm, with individual switching on accommodation deck. Lighting plan to be submitted to owners for approval. DC lighting to be supplied throughout.

#### **WIPER**

One (1) x Speich ( or similar) windscreen wiper with pantograph arm and self-parking shall be fitted to helm central navigation window.

#### **5.10 INSULATION**

Engine room A30 approved fire insulation shall be screw fixed into engine rooms in accordance with the code requirements for structural fire protection also providing suitable noise retardant properties. The engine room forward and aft bulkhead and deck head in way of accommodation space shall be fitted with approved fire rated compound.

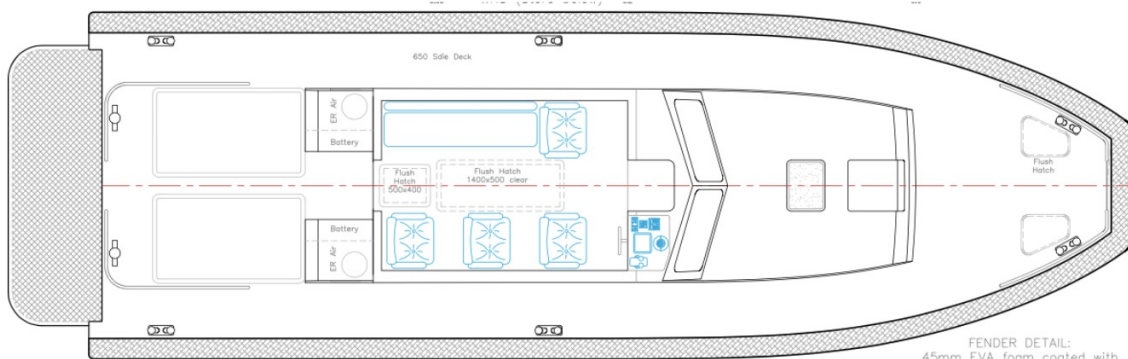
#### **5.11 EXHAUST & VENTILATION SYSTEM**

Exhaust Systems shall be two (2) of Stainless steel wet exhaust mixers, connected to a wet exhaust system with suitable flexible connections through plum boxes to the outboard side of the hulls with fabricated cowlings above the load waterline. Genset wet exhausts located outside of hull with suitable cowling.

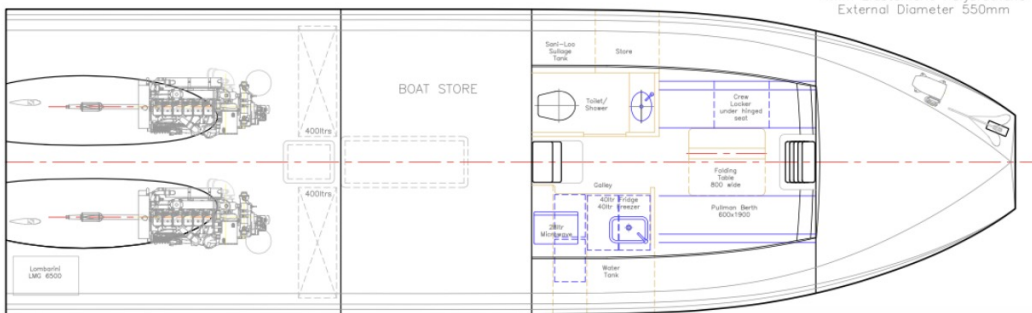
#### **5.12 AIR CONDITIONING**

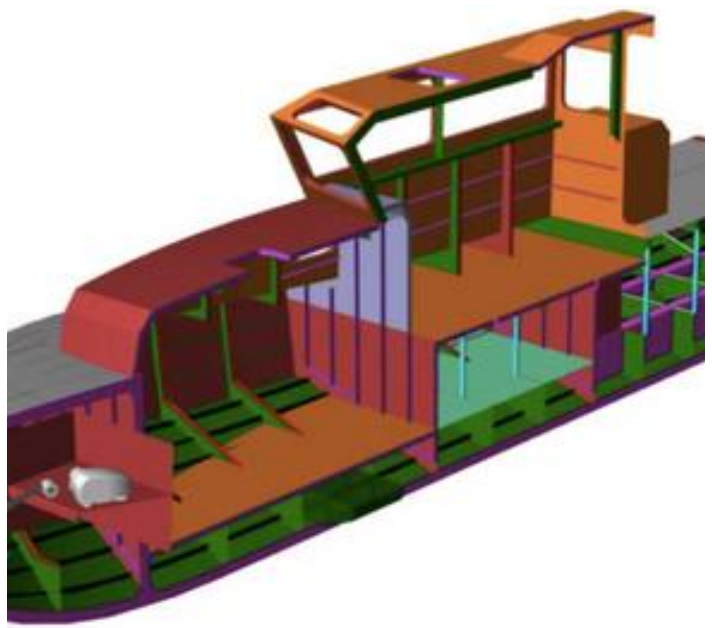
We shall supply and install 2 Coleman MarineMach 13,500 btu air conditioner units. All enclosed passenger space on the vessel shall be air-conditioned.



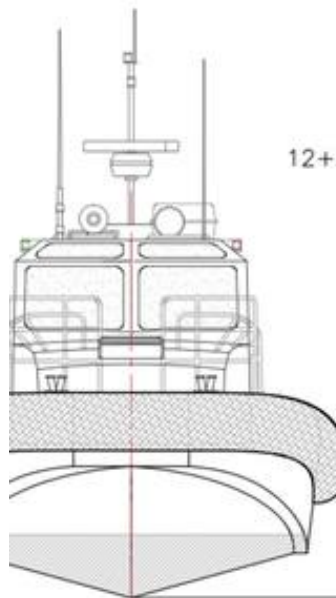
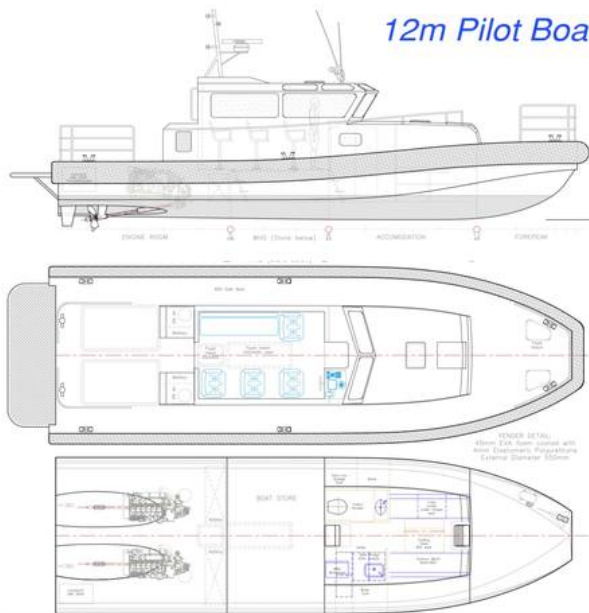


FENDER DETAIL:  
45mm EVA foam coated with  
4mm Elastomeric Polyurethane  
External Diameter 550mm



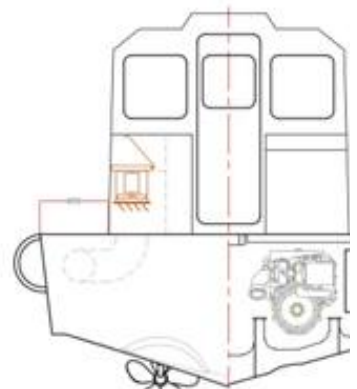


12m Pilot Boat



CLASS STANDARD:  
DNV R2

SURVEY: NSCV 2C  
12+2 Offshore Operations 30nm



The details of all vessels are offered in good faith but we cannot guarantee or warrant the accuracy of this information nor warrant the condition of the vessel. Any buyer should instruct their agents, or their surveyors, to investigate such details as the buyer desires validated. This vessel is offered subject to sale, price change, location or withdrawal without notice.

