



SEA BOATS

MARINE BROKERS WITH A GLOBAL APPROACH

AUSTRALIA - BULGARIA - INDIA - INDONESIA - ITALY - MALAYSIA - NEW ZEALAND - PANAMA - PHILIPPINES - SINGAPORE - SPAIN - UK - USA - VENEZUELA - VIETNAM

sales@seaboats.net - www.seaboats.net

16.2m Pilot Boat / 2 x 500HP Kewatec Pilot 1620.



Listing ID - 2297

Description 16.2m Pilot Boat / 2 x 500HP Kewatec Pilot 1620

Date 2016

Launched

Length 16.2m (53ft)

Beam 5.2m (17ft)

Draft 1.2m (3ft 11in)

Location Flensburg, Germany

Broker Richard Pierrepont
richard.pierrepont@seaboatsbrokers.com
+44 7798 607 323

Price 650,000 EUR

Price Notes Sellers prefer en-bloc, however, single sales are possible.

Port / Flag: German COE

LOA: 16.2m

Beam: 5.2m

Draft: 1.2m

Tonnage: 28 BRZ

Year Built: 2016

Engine / Prop: Scania, 2x 500HP

Max Speed: 27 knots

Cruising: 22 knots

Accommodation: 4 + 2 crews

Operational Profile

Pilot boat, crew transfer vessel for small teams. Very economical fuel consumption per nautical mile.

Equipment and Arrangement

Navigation: DGPS, ECDIS, AIS, Navtex, Radar, Autopilot, Echosounder

Communication: A1 (2 VHF), LTE

Light + camera: high power searchlight, IR camera, bow and deck lights

Deck Load: Small Cargo

Deck Crane (MOB): 1 x 0.99t

Safety Equipment

Liferafts: 1 x 8 persons

Survival Suits: 6

Life Jackets: 6

AR Rescue Stick (MOB): 1

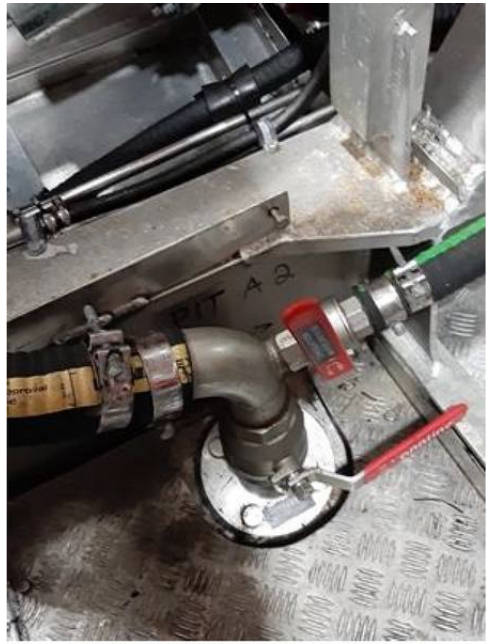
Running Hours

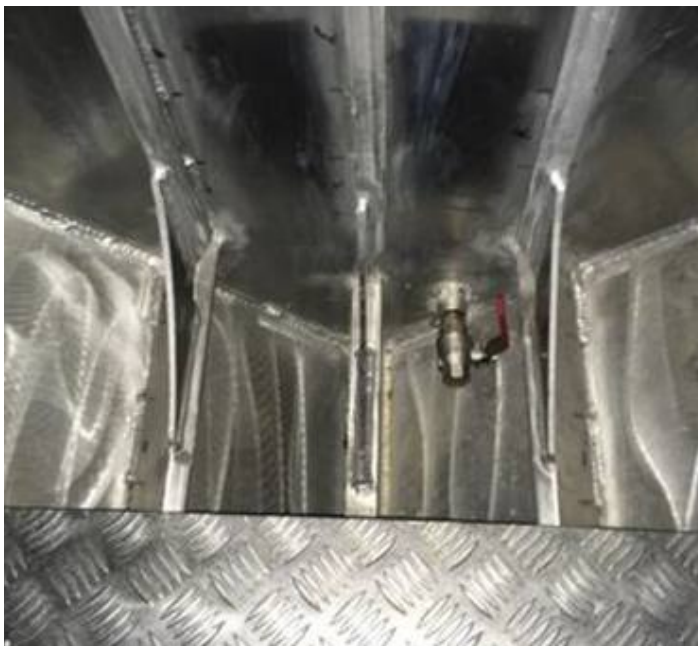
SB: 5720

PS: 5720

















The details of all vessels are offered in good faith but we cannot guarantee or warrant the accuracy of this information nor warrant the condition of the vessel. Any buyer should instruct their agents, or their surveyors, to investigate such details as the buyer desires validated. This vessel is offered subject to sale, price change, location or withdrawal without notice.



AUSTRALIA - BULGARIA - INDIA - INDONESIA - ITALY - MALAYSIA - NEW ZEALAND - PANAMA - PHILIPPINES - SINGAPORE - SPAIN - UK - USA - VENEZUELA - VIETNAM