



SEA BOATS

MARINE BROKERS WITH A GLOBAL APPROACH

AUSTRALIA - BULGARIA - INDIA - INDONESIA - ITALY - MALAYSIA - NEW ZEALAND - PANAMA - PHILIPPINES - SINGAPORE - SPAIN - UK - USA - VENEZUELA - VIETNAM

sales@seaboats.net

www.seaboats.net

59m RoRo Passenger Car Ferry



Listing ID - 3066

Description 59m RoRo Passenger Car Ferry

Date 1999

Launched

Length 59m (193ft 6in)

Beam 14.60m (47ft 10in)

Draft 2.2m (7ft 2in)

Location Greece

Broker John Kearns
john.kearns@seaboatsbrokers.com
+64 21 400 805

Price Best offers

59m RoRo Passenger Car Ferry built 1999 in Greece to INSB class. Vessel capacity is 500 passengers and 76 cars. Powered by twin Guascor marine diesel engines developing 630 hp each @ 1600 rpm and providing a service speed of 11.5 knots.

Built: 1999 Piraeus

Dimensions: 59m x 14.60m X 2.2m max loaded draft & 1.85m mean loaded draft

DWT: 460 tons

GRT/NRT: 487 / 128

Light ship displ: 510.5 tons

Full loaded displ: 955.82t on 2.11m draft

Free Board: 1010 mm

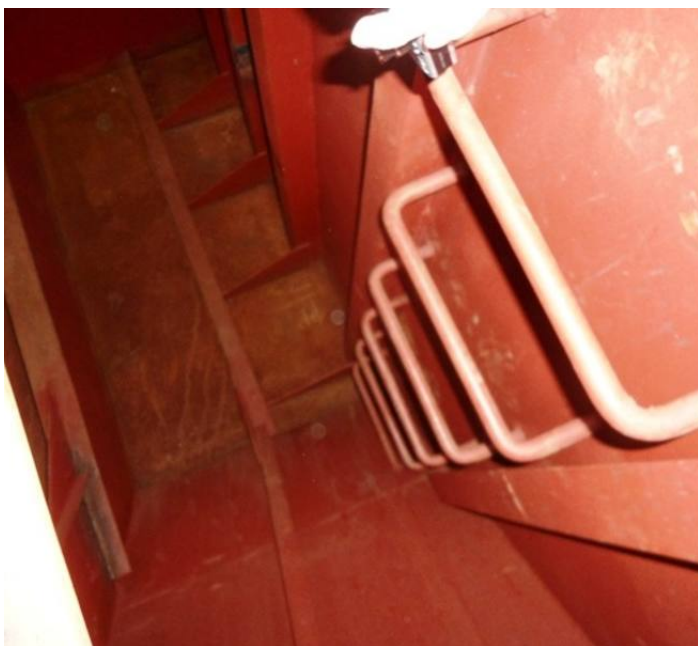
Class: INSB

Bow Ramp with emergency Stern Ramp

Main engines: 2 x GUASCOR F240T-SP 2 x 630hp @ 1600rpm

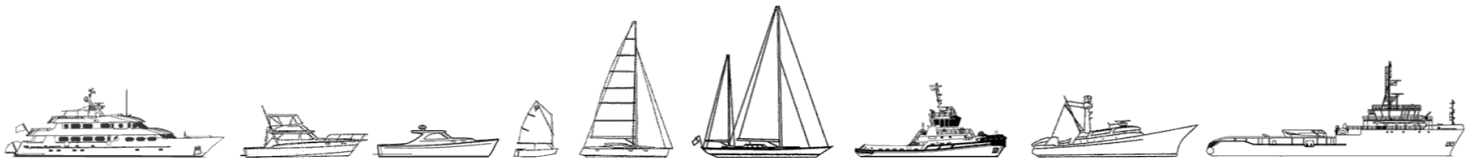
Generators: Cummins 2 x 117kva each
Speed: 11.5 / 12 knots
Consumption: approx 90L/hr
Fresh water cap: 50 tons
Fuel capacity: 100 tons
Car capacity: 76 European type cars
Passenger capacity: 500 passengers
NAVAIDS: According to Class
Crew cabins: 4 cabins with 8 berths
Sewage treatment plant
Air conditioning: 2x Air-conditioning units of 60.000 BTU each







The details of all vessels are offered in good faith but we cannot guarantee or warrant the accuracy of this information nor warrant the condition of the vessel. Any buyer should instruct their agents, or their surveyors, to investigate such details as the buyer desires validated. This vessel is offered subject to sale, price change, location or withdrawal without notice.



AUSTRALIA - BULGARIA - INDIA - INDONESIA - ITALY - MALAYSIA - NEW ZEALAND - PANAMA - PHILIPPINES - SINGAPORE - SPAIN - UK - USA - VENEZUELA - VIETNAM