



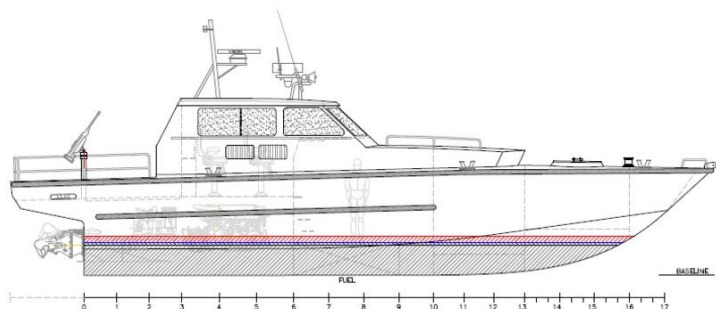
SEABOATS

MARINE BROKERS WITH A GLOBAL APPROACH

AUSTRALIA - BULGARIA - INDIA - INDONESIA - ITALY - MALAYSIA - NEW ZEALAND - PANAMA - PHILIPPINES - SINGAPORE - SPAIN - UK - USA - VENEZUELA - VIETNAM

sales@seaboats.net - www.seaboats.net

NEW BUILD - 13.5m Fast Patrol Boat - Kitset



Listing ID - 3083

Description NEW BUILD - 13.5m Fast Patrol Boat

Date Built to Order

Launched

Length 15m (49ft)

Beam 4.2m (13ft 9in)

Draft 0.7m (2ft 3in)

Broker Geoff Fraser
geoff.fraser@seaboats.net
+64 21 61 222 5

Price POA

Price Notes This is offered as a Kit-set only for retail buyers or builders. We may also be able to find a builder.

This is offered as a Kit-set only for retail buyers or builders. We may also be able to find a builder.

LOA: 15m

Lmoulded: 13.5m

LWL: 11.5m

Beam: 4.2m

Bchine: 3.8m

A frontal: 11.2m²

Deadrise: 18 degrees

Draft: 0.7m

Fuel: 2,400 litres

Water: 540 litres

Sullage: 230 litres

Main Engine: 2x Scania D113 077M 551kW @ 2300rpm

Gearbox: 2x ZF 325 – 1

Propulsion: 2x Doen DJ142

Genset: Kohler 11EFOZ 11kVa

Speed – max: 42.5 knots (2.5t dwt)

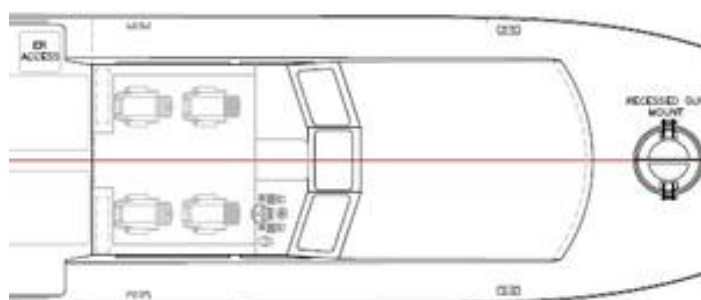
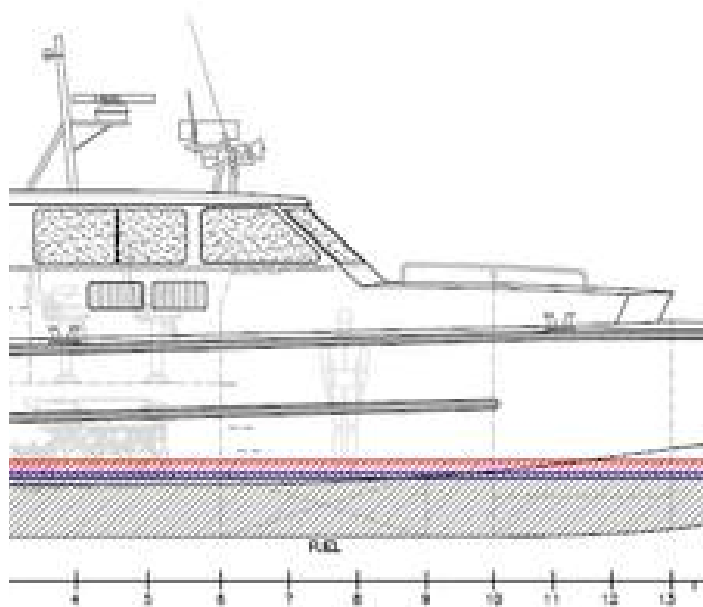
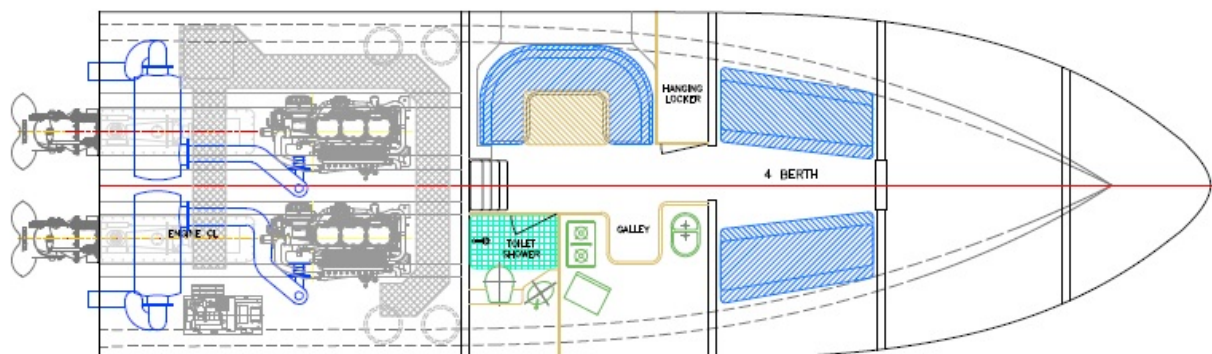
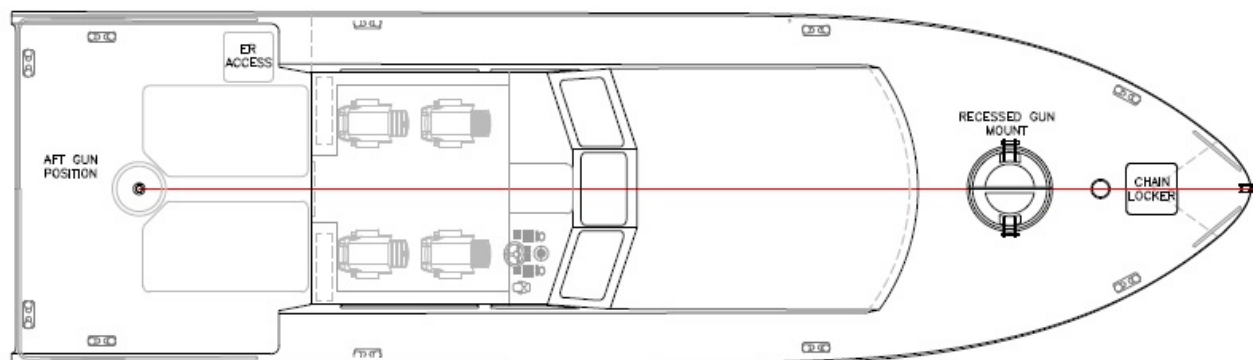
Speed – cruise: 32 knots

Range – Cruise: 320nm

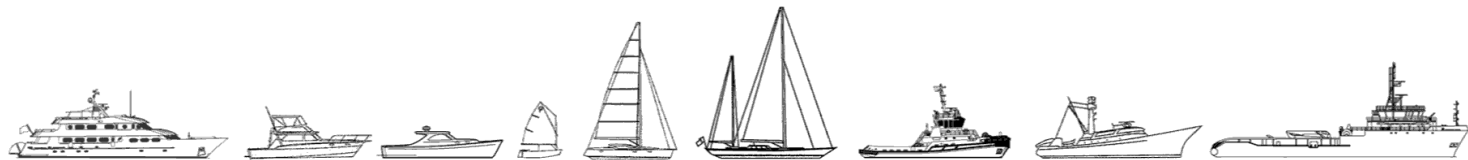
Class Standard: DNV R2 Patrol

Survey: NSCV 2C

Construction: Marine Grade Aluminium



The details of all vessels are offered in good faith but we cannot guarantee or warrant the accuracy of this information nor warrant the condition of the vessel. Any buyer should instruct their agents, or their surveyors, to investigate such details as the buyer desires validated. This vessel is offered subject to sale, price change, location or withdrawal without notice.



AUSTRALIA - BULGARIA - INDIA - INDONESIA - ITALY - MALAYSIA - NEW ZEALAND - PANAMA - PHILIPPINES - SINGAPORE - SPAIN - UK - USA - VENEZUELA - VIETNAM