



SEABOATS

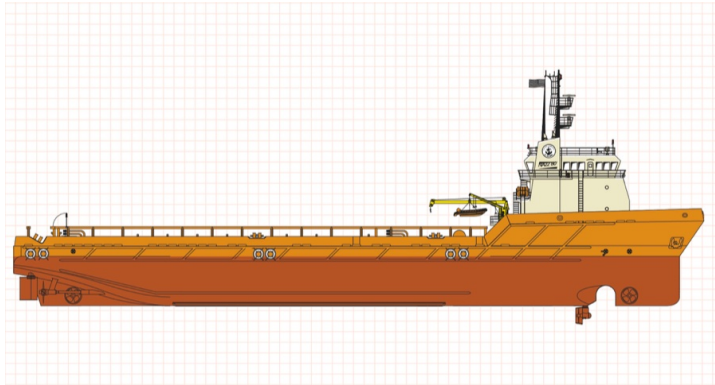
MARINE BROKERS WITH A GLOBAL APPROACH

AUSTRALIA - BULGARIA - INDIA - INDONESIA - ITALY - MALAYSIA - NEW ZEALAND - PANAMA - PHILIPPINES - SINGAPORE - SPAIN - UK - USA - VENEZUELA - VIETNAM

sales@seaboats.net

www.seaboats.net

280ft OSV



Listing ID - 3427

Description 280ft OSV

Date 2007

Launched

Length 85.34m (280ft)

Beam 18.29m (60ft)

Draft 7.32m (24ft)

Location USA

Broker Geoff Fraser
geoff.fraser@seaboats.net
+64 21 61 222 5

Hull: 238

Vessel Type: Offshore Supply Vessel

Year Built: 2007

Shipyard: North American Fabricators

LOA: 85.34m (280ft)

Beam: 18.29m (60ft)

Draft: 7.32m (24ft)

Draft (Lightship): 7 ft. 3 in (2.21m)

Draft (Loadline): 19.24 ft. (5.87m)

Clear Deck: 203 ft. x 50.5 ft. (61.89m x 15.40m)

Cargo Deck Area: 10,251 sq. ft. (953 sq.m)

Deck Cargo Capacity: 2,700 LT (2,743.20 MT)

Deadweight Tonnage: 4,870.12 LT (4,948.04 MT)

CAPACITIES

Fuel Oil: 348,617 gals. (1,319.66 cu.m)
Ballast: 374,186 gals. (1,416.45 cu.m)
Potable Water: 34,816 gals. (131.79 cu.m)
Dry Bulk: 11,455 cu. ft. @ 80 psi (324.37 cu. m @ 5.5 bars)
Liquid Mud: 15,441.2 barrels (2,454.95 cu.m)

MACHINERY

Main Engines: 2x CAT C280-8 Diesels, 7,200 BHP
Main Propulsion: 2x Schottel CP Wheels
Bow Thrusters: 1x 1,150 HP Rolls Royce Swing Up
Bow Thrusters: 1x Brunvoll FU80 LTC 2000
Stern Thrusters: 1x Brunvoll FU80 LTC 2000
Speed: 13 knots
Generators: Two (2) x 910 kW
Generators: One (1) x 175 kW emergency

SPECIAL FEATURES

Tuggers: Two (2) x 4 Tons
Ship Motion: Two (2) Passive Type Anti-Roll Tanks
Ship Motion: Bilge Keels
Positioning: DP 2
Deck Crane: One (1) x 3,100 lbs. capacity

LIFE SAVING EQUIPMENT

Life Rafts: Four (4) x 25-Man Inflatable Life Rafts
Life Rafts: One (1) x 10-Man Inflatable Life Raft
Rescue Boat/Craft: One (1) x Narwhal SV 400 SOLAS Rescue Boat with davit
Other gear as required by authorities

MSRC EQUIPMENT

Weedo 910 Tug and Macgregor Davit System
Sea Sentry Oil Boom Hydraulic Reel
Rutter Sigma S6 Spill Detection and (not on board but equipped for) Lamor Offshore Skimmer Unit LOS 350/140

ELECTRONICS

JRC JUE-85 Inmarsat-C
JRC JSB-196 GM SSB Radio Telephone
JRC NCT-196N DSC/NBDP Modem
JRC NDZ-127J Data Terminal
JRC JFE-585 Echo Sounder
JRC NWZ-4570 GPS Navigator
JRC JLR-7700 MKII GPS Navigator
C-Nav1000 R4 Navigation System
JRC NCR-333 Navtex Receiver
2x ICOM IC-M422 VHF Radios
ACR Navicast AIS Unit
2x Furuno FM-8800D/8800S VHF Radio Telephones
Havant Navitron NT88G Autopilot
3x Young Wind Trackers
3x Bridge Mate Meridian Gyro Compasses
3x ICOM Handheld Emergency VHF

ACR RBL-32 406 EPIRB

2x ACR SART

JRC JLN 205 Doppler Log

2x JRC Radars

2x DGPS

VSAT System

CyScan

2x MRU

Marine Technologies Dynamic Positioning System

2x JMX-444D VHF Radios

2x Icom IC-M72 Handheld VHF Radios

Motorola XPR 4550 Radio

2x Ventis MX4 Multi-gas Detector

CLASSIFICATION

ABS: Maltese Cross A1 (Hull)

ABS: Maltese Cross AMS (Machinery)

ABS: Loadline

ABS: DP 2

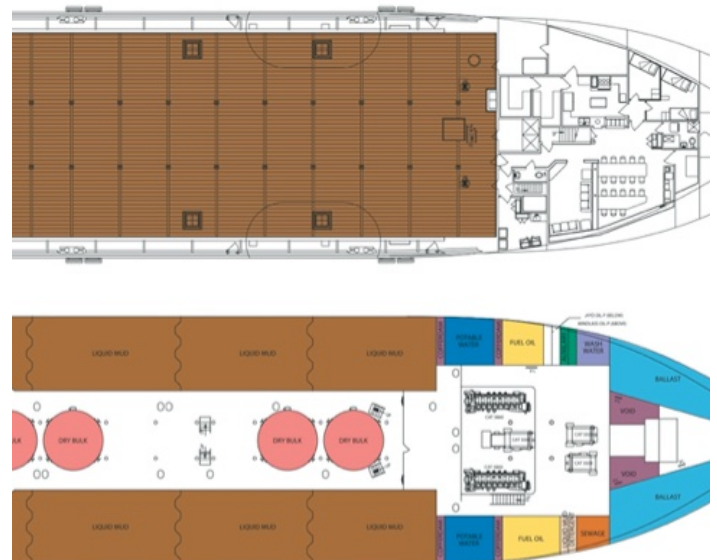
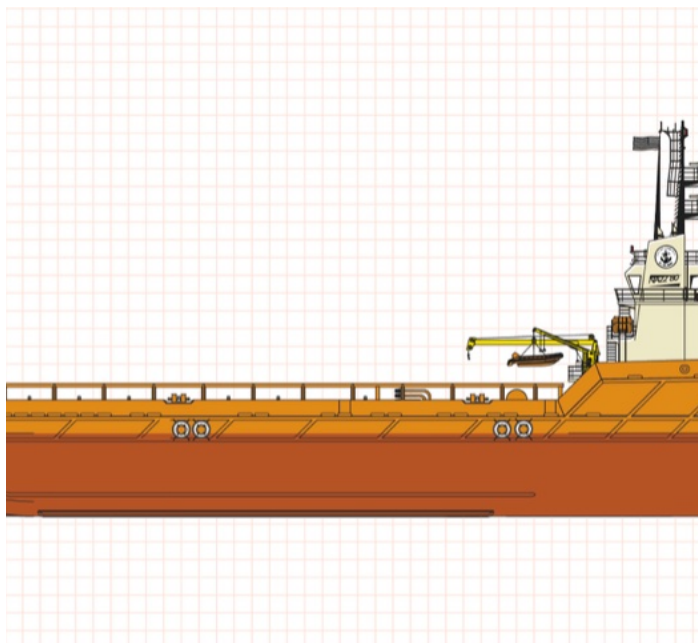
USCG: Subchapter L (OSV) and I (Cargo)

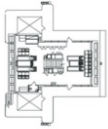
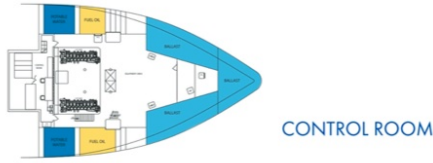
SOLAS: 2002

MARPOL: 1999

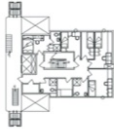
ACCOMMODATIONS

Accommodations: 29

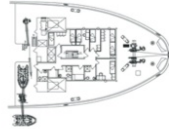




DECK 03



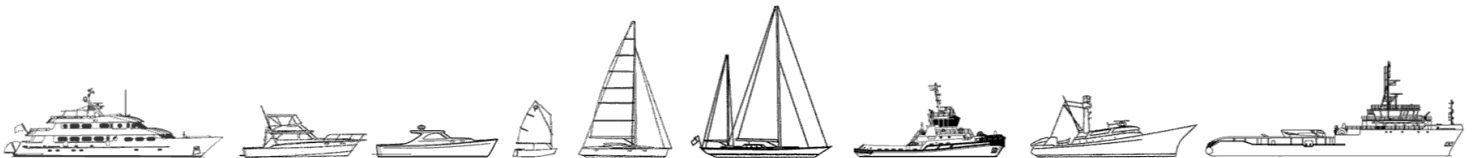
DECK 02



DECK 01



The details of all vessels are offered in good faith but we cannot guarantee or warrant the accuracy of this information nor warrant the condition of the vessel. Any buyer should instruct their agents, or their surveyors, to investigate such details as the buyer desires validated. This vessel is offered subject to sale, price change, location or withdrawal without notice.



AUSTRALIA - BULGARIA - INDIA - INDONESIA - ITALY - MALAYSIA - NEW ZEALAND - PANAMA - PHILIPPINES - SINGAPORE - SPAIN - UK - USA - VENEZUELA - VIETNAM