



SEABOATS

MARINE BROKERS WITH A GLOBAL APPROACH

AUSTRALIA - BULGARIA - INDIA - INDONESIA - ITALY - MALAYSIA - NEW ZEALAND - PANAMA - PHILIPPINES - SINGAPORE - SPAIN - UK - USA - VENEZUELA - VIETNAM

sales@seaboats.net - www.seaboats.net

30m Tug - ASD For Charter



Listing ID - 3461

Description 30m Tug - ASD For Charter

Date 1991

Launched

Length 30m (98ft 5in)

Beam 9.6m (31ft)

Draft 4.3m (14ft)

Note 50T Bollard Pull

Location UK

Broker Richard Pierrepont
richard.pierrepont@seaboatsbrokers.com
+44 7798 607 323

Built: 1991, United Kingdom

Hull material: steel

Flag: United Kingdom

Class Society and Notation: Lloyds Register +100 A1 Class

Next DD: November 2022

Next SS: December 2025

Next Annual Survey: 2021

PRINCIPLE DIMENSIONS

Length Overall: 30.00 m

Breadth: 9.60m

Depth: 4.80 m

Draft: 4.30 m

NT: 111 tons
GT : 371 tons
DWT: 224 tons

MACHINERY & PROPULSION

Total power output : 3520 bhp
Main Engines: 2 x Ruston RK270M
Main Propulsion System: ASD
Auxiliary engines: 2 X 406 KW, Shaft
Speed maximum: 12.5 knots

ADDITIONAL INFORMATION

Maximum Height 21m
Freeboard 1370mm
ASD Aquamaster us 1251/27550
Bow thruster Tastram Type 20F

Performance

Max Bollard pull 50 tons
Cruising @ 9Kts 260 lt

Capacities

Fuel Oil 110 m³, Fresh Water 51 m³, Ballast Water 21 m³
Lube Oil 3.5 m³, Dirty oil/Sludge m³, Sewage 0.5 m³

Deck Equipment

Towing Winch Forward Brattvaag B3/SL7
Brake Capacity 150 tons
Capacity 44mm Plaited Dyneema
200 Meters
Towing Winch Aft Brattvaag B3/SL7
Brake Capacity 150 tons
Capacity 44mm SWR 700 Meters
Tugger winch Aft Brattvaag B3/SL7
Deck Crane NA
Anchor Winch 7 tons

Auxiliary Equipment

Harbour 1 X 106 KVA
Voltage, Frequency 3 X 440V, 50Hz

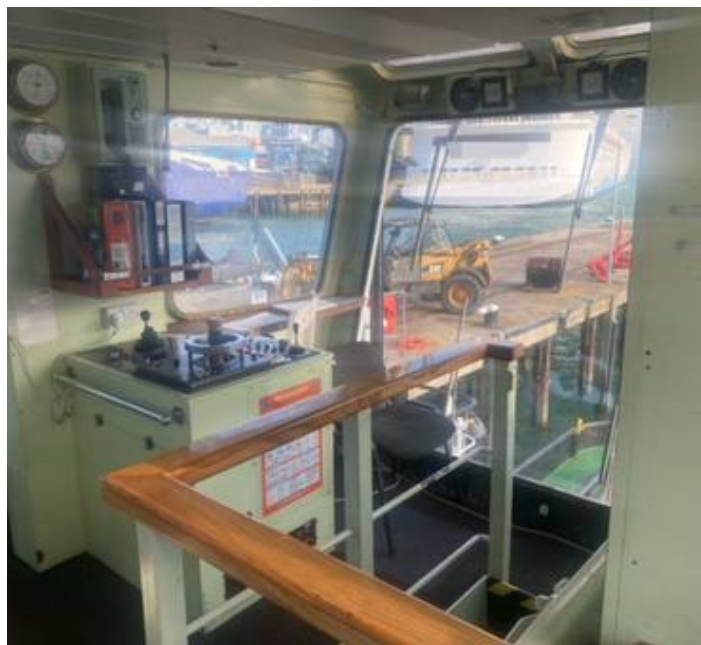
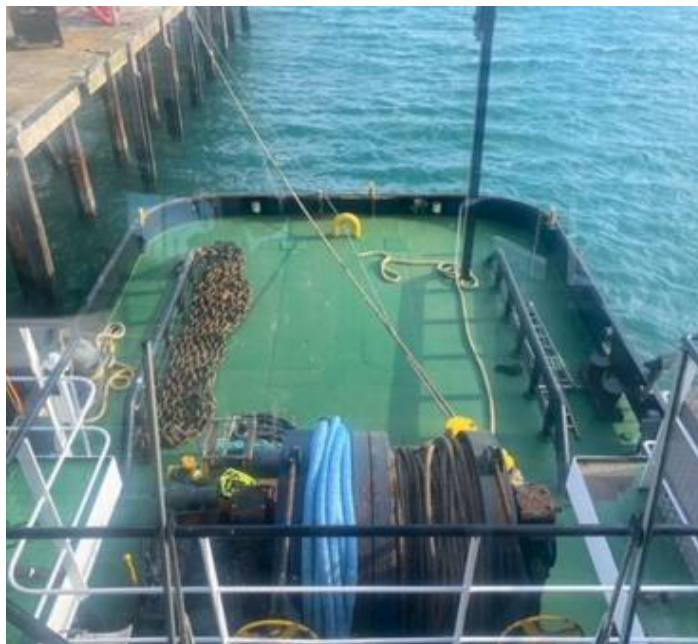
Accommodation

1 Man Cabin 2, 2 Men Cabin 3, Mess Room 1, Gallery 1, Heads 2

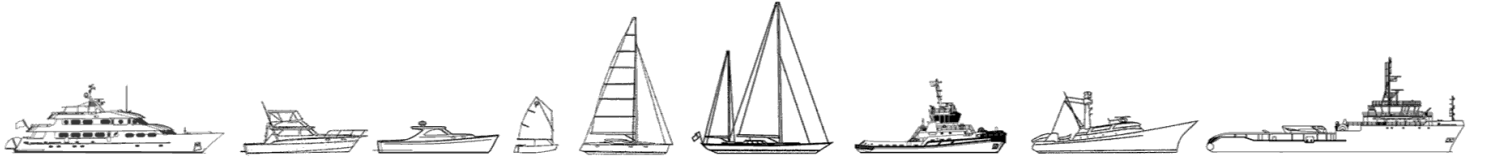
Navigation Equipment

Radar 1
VHF 2
MF/HF 1
Echo Sounder 1
Auto Pilot 1

NAVTEX 1
GPS Navigator 2



The details of all vessels are offered in good faith but we cannot guarantee or warrant the accuracy of this information nor warrant the condition of the vessel. Any buyer should instruct their agents, or their surveyors, to investigate such details as the buyer desires validated. This vessel is offered subject to sale, price change, location or withdrawal without notice.



AUSTRALIA - BULGARIA - INDIA - INDONESIA - ITALY - MALAYSIA - NEW ZEALAND - PANAMA - PHILIPPINES - SINGAPORE - SPAIN - UK - USA - VENEZUELA - VIETNAM