



SEABOATS

MARINE BROKERS WITH A GLOBAL APPROACH

AUSTRALIA - BULGARIA - INDIA - INDONESIA - ITALY - MALAYSIA - NEW ZEALAND - PANAMA - PHILIPPINES - SINGAPORE - SPAIN - UK - USA - VENEZUELA - VIETNAM

sales@seaboats.net - www.seaboats.net

260ft Well Stimulation Vessel



Listing ID - 3662

Description 260ft Well Stimulation Vessel

Date 2002

Launched

Length 79.24m (260ft 11in)

Beam 17.07m (56ft)

Draft 5.49m (18ft)

Note 2,373 LT (2,410.97 MT)

Location USA

Broker Geoff Fraser
geoff.fraser@seaboats.net
+64 21 61 222 5

Price POA

Registration

Hull: 212

Vessel Type: Well Stimulation Vessel / OSV

Year Built: 2002

Dimensions

LOA: 260ft

Dimensions: 260 ft. x 56 ft. x 21 ft. (79.27m x 17.07m x 6.40m)

Draft (Lightship): 6 ft. 6 in. (1.98m)

Draft (Loadline): 18 ft. (5.49m)

Freeboard (Loadline): 3'-0" (0.91 m)

Freeboard (Lightship): 14'-6" (4.42 m)

Displacement (Lightship): 2,373 LT (2,410.97 MT)

Deadweight Tonnage: 2,557 LT (2,598 MT)

Capacities

Fuel Oil: 264,978 gallons (1,003 m3)

Ballast: 202,029 gallons (764.8 m3)

Potable Water: 24,000 gallons (90.8 m3)

Wash Water: 6,920 gallons (26.2 m3)

Dry Bulk: 10,973 ft.3 (31 m3) @ 80 psig

In-internal FRAC Tanks: 308,645 gallons (7,348 bbls)

Machinery

Main Engines: Two (2) x 3606 Caterpillar • 2700 BHP @ 1000 rpm each

Bow Thrusters: One (1) x 1000 hp Ulstein 150TV Tunnel (Electric Driven)

Stern Thrusters: One (1) x 1000 hp Ulstein 150TV Tunnel (Electric Driven)

Speed: 12.2 knots @ 16'-0" Draft

Gears: Two (2) x 600 AGSC Ulstein driving • Two (2) 2800mm 4 Blade CPP • Two (2) x 1.1 mW Shaft Generator

Emergency Generators: One (1) x 190 kw (3306 Cat)

Ship's Service Generators: Two (2) x 910 kw (3508 Cats)

Shaft Generators Two: (2) x 1.1 mW KATO Generators

Special Features

Ship Motion: Two (2) Passive Type Anti-Roll Tanks

Ship Motion: Port & STBD Bilge Keel System

Positioning: DPS-2 Dynamic Positioning System

Steering and Controls: Two (2) x Independent High Lift (style) Rudder System

Deck Provision Crane: 3-Ton Deck Provision Crane

Life Saving Equipment

Life Rafts: Six (6) Inflatable Life Rafts

Rescue Boat/Craft: One (1) x Narwhal SV-400H Rescue Boat

Other gear as required by authorities

Classification

ABS: (A!) Maltese Cross (Hull)

ABS: Load Line

ABS: (AMS) Maltese Cross (Machinery)

ABS: (DPS-2) Maltese Cross

USCG: Subchapter L (O.S.V.) & I (Cargo)

USCG: Minimally Manned Engine Room

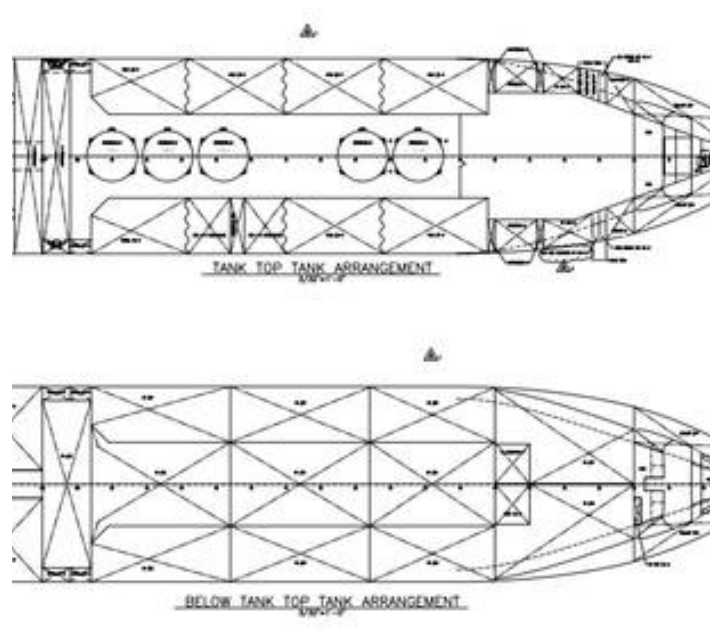
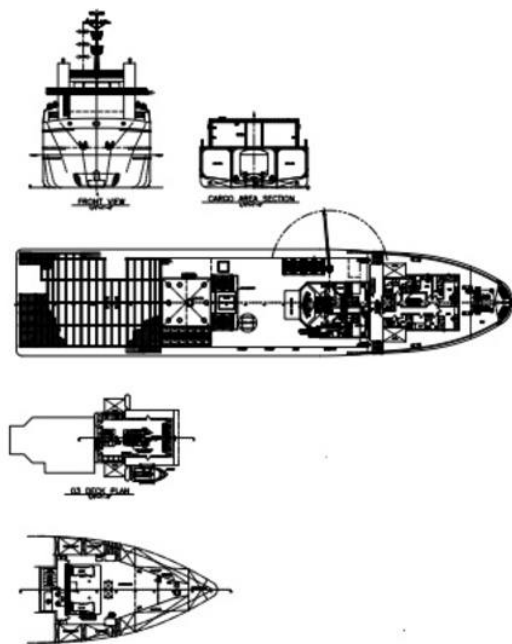
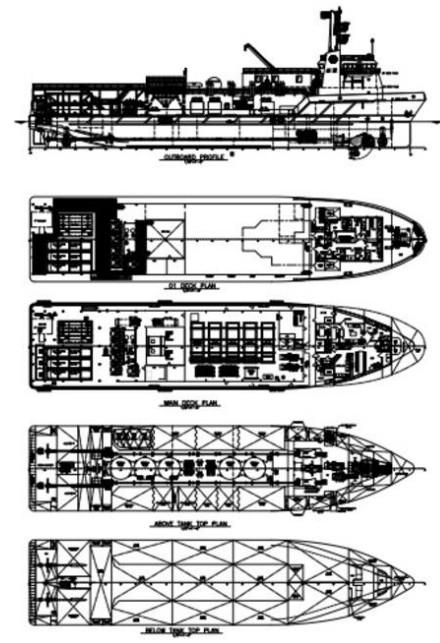
SOLAS: Cargo Ship ('99)

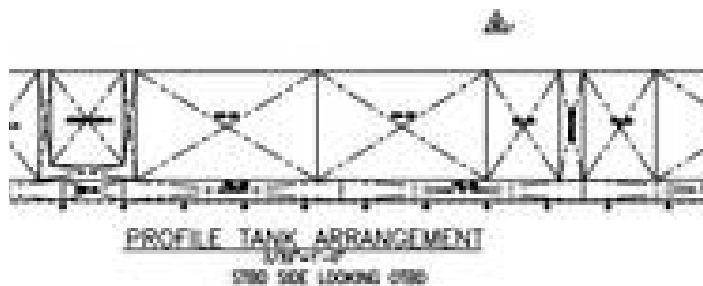
MARPOL: Ship Other Than Oil Tankers Carrying Oil ('99)

Accommodations

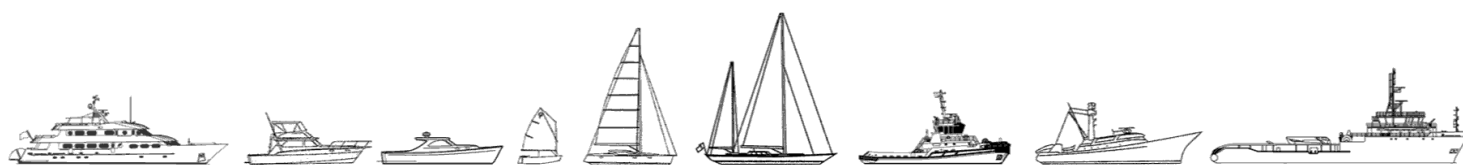
Accommodations: 29 Bunks







The details of all vessels are offered in good faith but we cannot guarantee or warrant the accuracy of this information nor warrant the condition of the vessel. Any buyer should instruct their agents, or their surveyors, to investigate such details as the buyer desires validated. This vessel is offered subject to sale, price change, location or withdrawal without notice.



AUSTRALIA - BULGARIA - INDIA - INDONESIA - ITALY - MALAYSIA - NEW ZEALAND - PANAMA - PHILIPPINES - SINGAPORE - SPAIN - UK - USA - VENEZUELA - VIETNAM