



SEABOATS

MARINE BROKERS WITH A GLOBAL APPROACH

AUSTRALIA - BULGARIA - INDIA - INDONESIA - ITALY - MALAYSIA - NEW ZEALAND - PANAMA - PHILIPPINES - SINGAPORE - SPAIN - UK - USA - VENEZUELA - VIETNAM

sales@seaboats.net - www.seaboats.net

NEW BUILD - 16.45m Workboat



Listing ID - 424059

Description NEW BUILD - 16m Workboat

Date Built to Order

Launched

Length 16.45m

Beam 8.10m

Draft 1.10m approx.

Location ex Shipyard, NSW, Australia

Broker Ivan Colaco
ivan.colaco@seaboatsbrokers.com
+61 401 695 814

PRINCIPAL DIMENSIONS:

Measured Length: 16.45 metre
Hull Draft (approx): 1.40 metre including skeg
Overall Beam: 8.10 metre
FO Capacity: approx 2 x 7250 litre
Depth: 2.40 metre
FW Ballast Capacity: approx 2200 litre

PROPULSION:

Main Engines: 2 x Volvo TAMD122A, 380HP @ 1800RPM, keel cooled
Gearboxes: 2 x ZF-IRM 350 gearboxes with standard ratios of 4.961:1
Rudders, Propellers & Shaft: 2 x 5-bladed Kaplan type propeller approx. 1100mm with bronze nuts.
Shafting to be 4"Ø, material 2205 duplex grade stainless steel, tapered and keyed both ends fitted with nuts and keys. Rudder stock to be 2 x 2" 316 stainless steel with mild steel plate rudder.
Generator: 1 x 30 KVA Genset

SURVEY AND FLAG:

Flag: NSCV Class 2C/2D (6/12)

Hull Structure: LRR SSC G2

LIFE SAVING APPLIANCES/ FIRE FIGHTING EQUIPMENT (As per survey requirements):

6 x waterproof torches
12 x coastal life jackets
1 x first aid kit
2 x 406 MHz E.P.I.R.B.
1 x portable air horn
3 x life buoys
2 x hand held flares
1 x hand held orange smoke signal
3 x parachute distress rockets
1 x 6 man capacity inflatable coastal liferaft
1 x VHF radios,
3 x black folding balls
2 x black folding cones
1 x first aid book.
4 x DCP fire extinguishers
1 x foam fire extinguisher
1 x fire hydrant
2 x fire buckets
1 x fire hose and fire nozzle
1 x bilge pump
1 x emergency bilge pump
1 x fire pump
1 x emergency fire pumps and smoke detectors
Novec 1230 bottles in engine room.
Structural Fire Protection to Survey standards.

NAVIGATION AND COMMUNICATION EQUIPMENT (As per survey requirements):

AIS Simrad Radar
Binoculars
Magnetic Compass, 100mm Dia Card
Depth Sounder
Navigation Lights
VHF Radiotelephone & Suitable Antenna System
GPS
Barometer
Charts and Nautical Publications
Clock
Signal Mirror

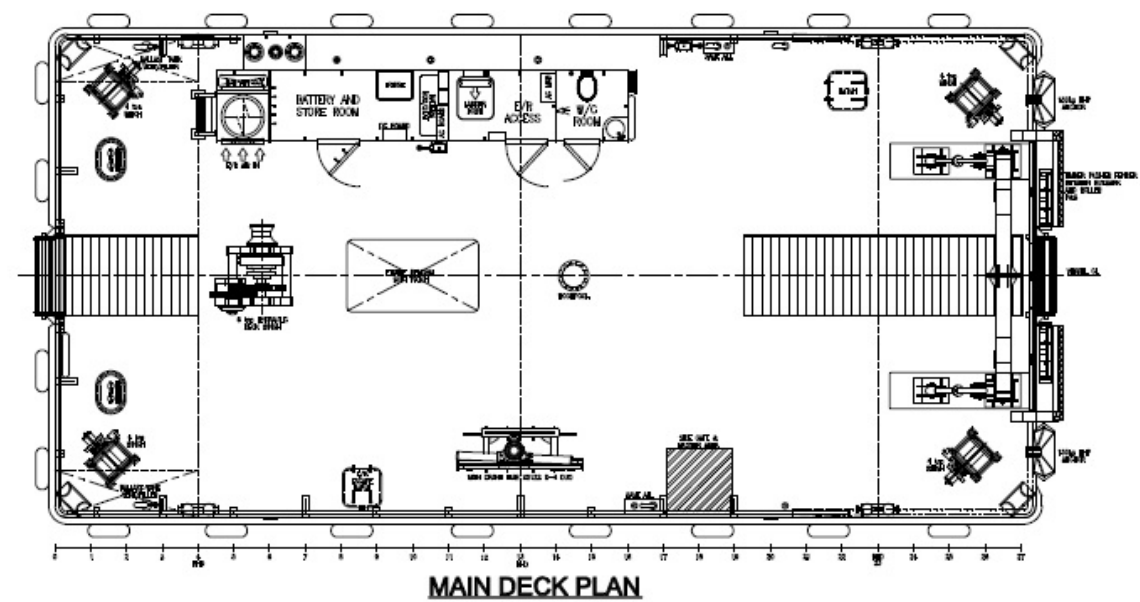
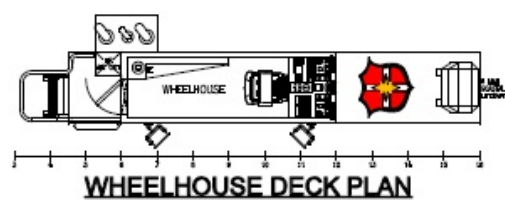
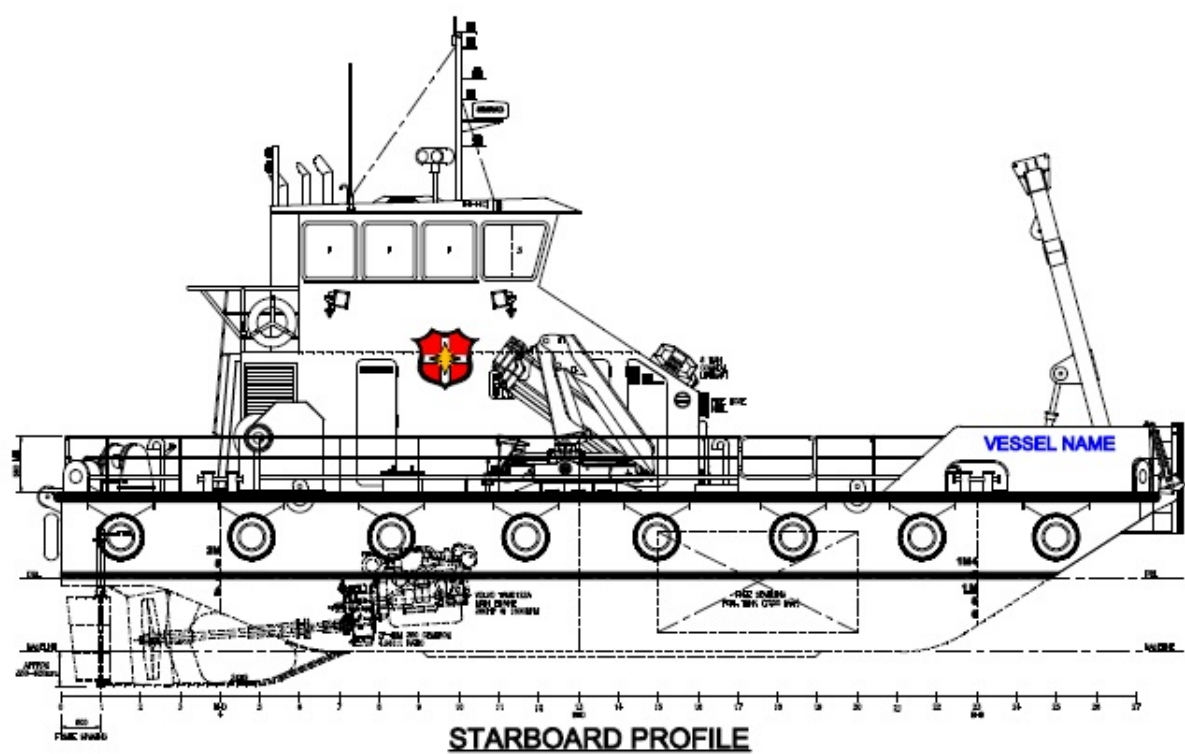
WINCHES/WINDLASS/ MOORING AND DECK EQUIPMENT:

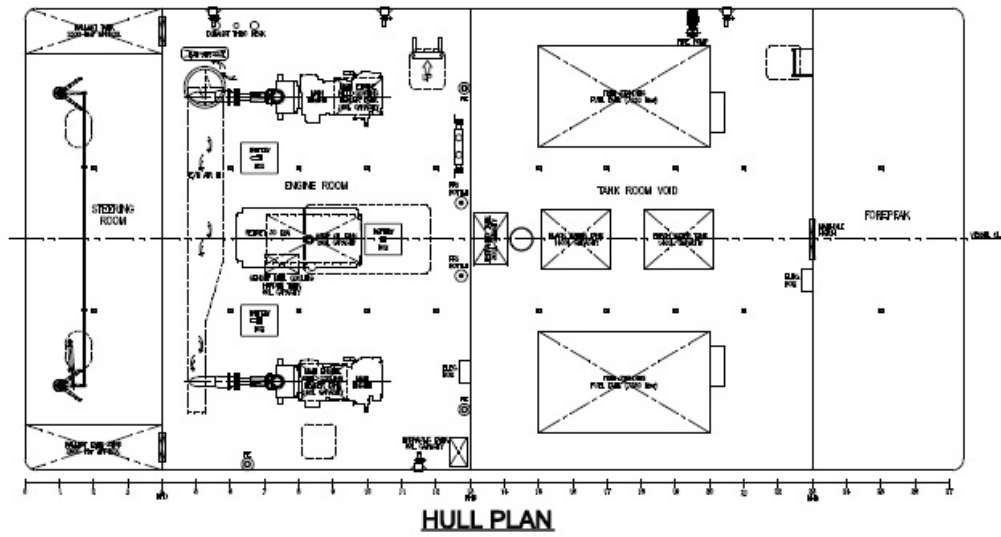
Anchors and chain to survey requirements. Bow roller at aft and fwd of vessel. Moonpool is fitted at Tank Room Void.
4 x 4t deck corner winches and chock are fitted. A main central deck winch, 10t capacity fitted at aft. Timber pusher fender fitted between bulwark and roller. 2 x aft bollards and 2 x fwd bollards. Bow roller fitted aft and forward.
A Hiab 122 D-4 Duo deck crane is also fitted at starboard side.

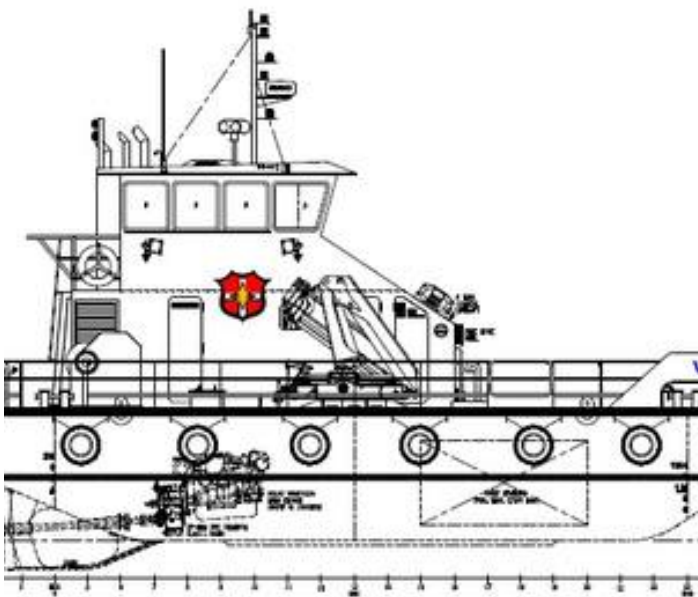
FITOUT:

Superstructure is situated at port side with Locker/Washroom fitted with WC and stainless steel hand basin, Engine Room Access and Changing/Store Room. All windows to be toughened safety glass (TSG). Fwd side windows to be slider type housed in frames, rests to be fixed type. Forward window

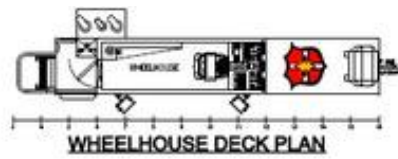
to be fitted with one windscreen wiper. Removable slide-in type bulwark panels to be installed across the bow in between vertical pusher fender.



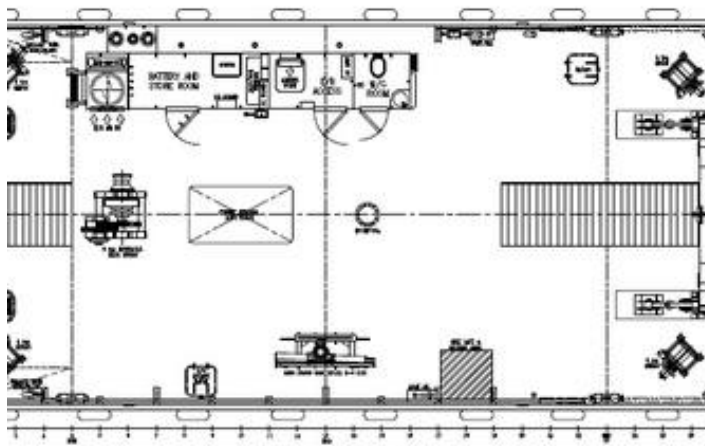




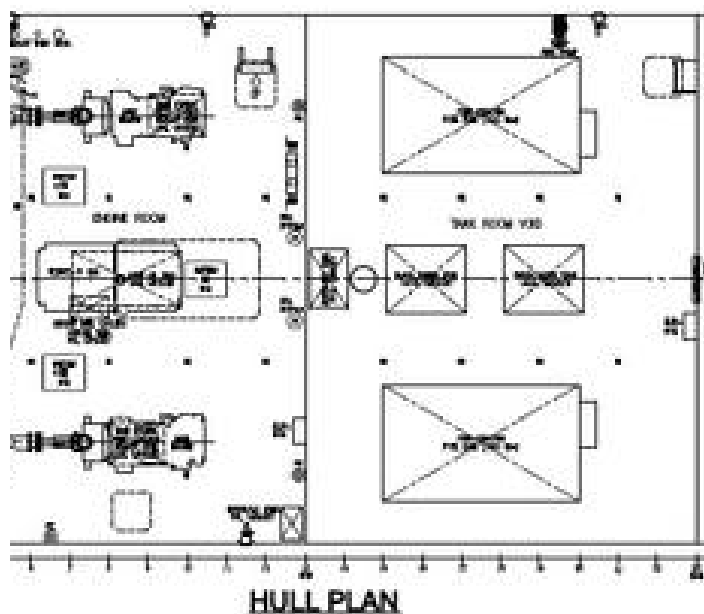
STARBOARD PROFILE



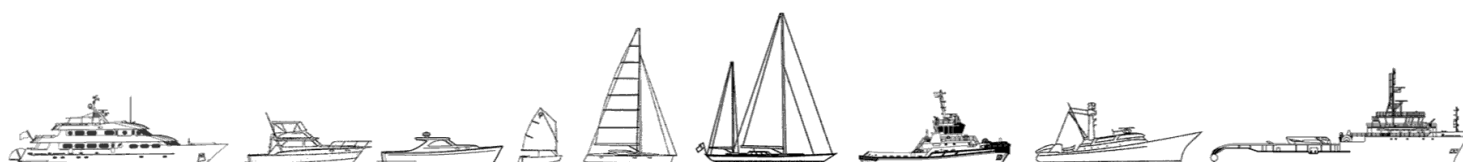
WHEELHOUSE DECK PLAN



MAIN DECK PLAN



The details of all vessels are offered in good faith but we cannot guarantee or warrant the accuracy of this information nor warrant the condition of the vessel. Any buyer should instruct their agents, or their surveyors, to investigate such details as the buyer desires validated. This vessel is offered subject to sale, price change, location or withdrawal without notice.



AUSTRALIA - BULGARIA - INDIA - INDONESIA - ITALY - MALAYSIA - NEW ZEALAND - PANAMA - PHILIPPINES - SINGAPORE - SPAIN - UK - USA - VENEZUELA - VIETNAM