



# SEABOATS

MARINE BROKERS WITH A GLOBAL APPROACH

AUSTRALIA - BULGARIA - INDIA - INDONESIA - ITALY - MALAYSIA - NEW ZEALAND - PANAMA - PHILIPPINES - SINGAPORE - SPAIN - UK - USA - VENEZUELA - VIETNAM

[sales@seaboats.net](mailto:sales@seaboats.net) - [www.seaboats.net](http://www.seaboats.net)

## NEW BUILD - 14.95m Workboat



### Listing ID - 424386

**Description** NEW BUILD - 14.95m Workboat

**Date** 2011

**Launched**

**Length** 14.95m

**Beam** 7.0m

**Draft** 1.0m

**Location** ex Shipyard, NSW, Australia

**Broker** Ivan Colaco  
[ivan.colaco@seaboatsbrokers.com](mailto:ivan.colaco@seaboatsbrokers.com)  
+61 401 695 814

### PRINCIPAL DIMENSIONS:

Length Overall: 14.95 metres  
Beam (moulded): 7.00 metres  
Depth (moulded): 1.80 metres  
Hull Draft (approx): 1.10 metres

### PAYLOAD CAPACITIES:

Fuel: approx 2 x 5800 litres  
F/W Ballast: approx 2 x 2200 litres  
F/W: approx 200 litres  
Sullage: approx 300 litres

### PROPULSION:

Main Engine: 2 x Caterpillar 3406 DITA, 400BHP @ 1800rpm  
Gearboxes: 2 x ZF 350 gearboxes with standard ratios of 4:1  
Rudders, Propellers & Shaft: 2 x 4-bladed Kaplan type propeller with bronze nuts. Shafting to be 3" Ø, material 2205 duplex grade stainless steel, tapered and keyed both ends fitted with nuts and keys.

Rudder stock to be 2 x 2" 316 stainless steel with mild steel plate rudder

**PERFORMANCE:**

Speed: approx 8.5 knots

**CLASS/SURVEY:**

Survey: MSQ Class 2C/2D (6/12)

Hull Structure: LRR SSC G2 CLASS

**LIFE SAVING APPLIANCES/FIRE FIGHTING EQUIPMENT(As per survey requirement):**

2 x battery operated waterproof torch

12x coastal life jacket with a light and whistle

1x scale of first aid kit

2 x 406 MHz EPIRB one in life raft

1 x portable air horn

2x life buoy with buoyant line

1 x life buoy with a light

2 x hand held flares

1 x hand held orange smoke signal

3 x parachute distress rockets

1 x 6 man capacity inflatable coastal liferaft

4 x fire extinguishers (ABE dry chemical powder, 4.5kg capacity)

1x smoke detector unit

1 x fire extinguisher (foam, 9 litre capacity)

1 x fire hydrant

1 x remote control for fire pump

1 x remote control for bilge pump

2 x 9 litre red metal fire buckets with lanyards

1 x control panel for fire detection and fire alarm system

1 x fire hose and fire nozzle

1 x fire pump

**NAVIGATION & COMMUNICATION EQUIPMENT (As per survey requirement): TO BE CONFIRMED**

GNSS Receiver (A2)

Depth Sounder

Speed and distance Indicator

Clock

Binoculars

Navigation Lights

Barometer

Signalling Light

Magnetic Compass, 100mm Dia Card

VHF Radiotelephone & Suitable Antenna System

Charts and Nautical Publications

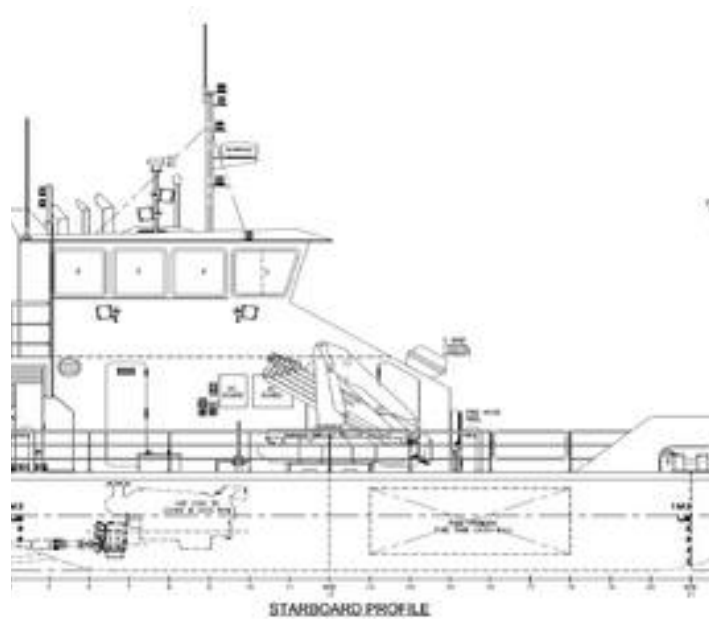
**WINCHES/WINDLASS and MOORING EQUIPMENT:**

Anchor and chain to survey requirements

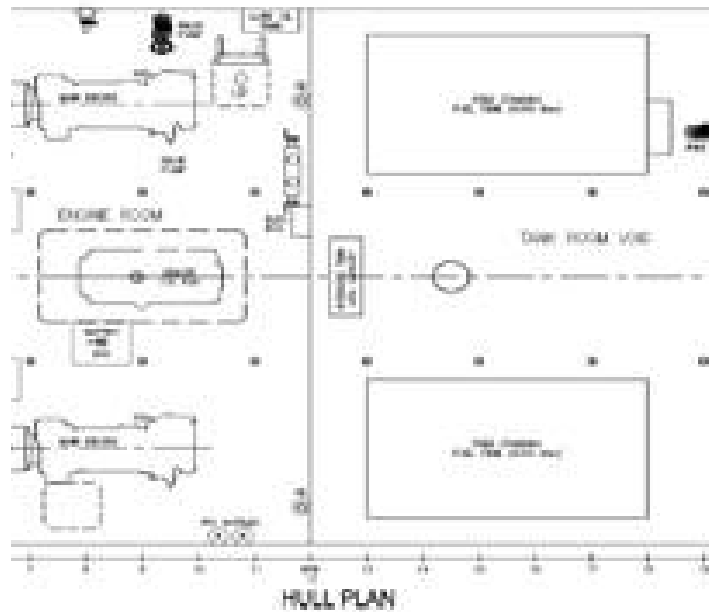
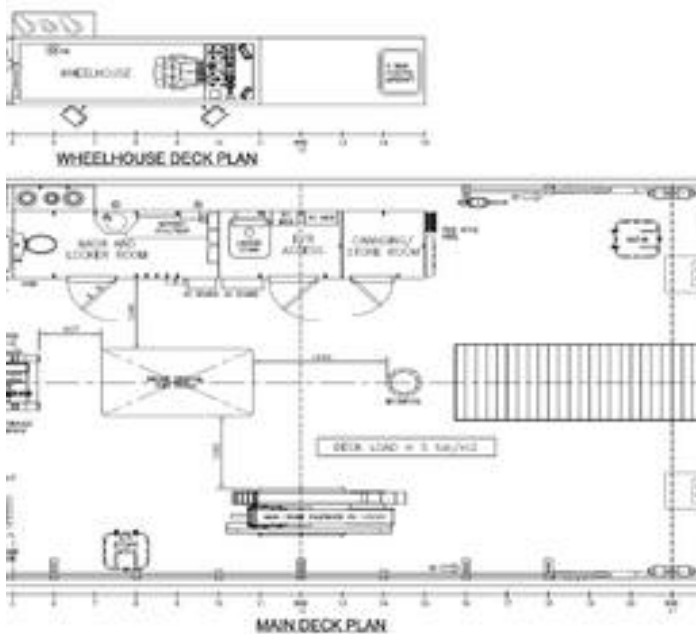
4 x deck corner winches are to be fitted and plumbed of 4t capacity. A main central deck winch of 6t capacity is to be fitted and plumbed

## FITOUT

Deck mounted AC system. Deck head to be insulated with rockwool or similar with a laminate finish. Wheelhouse forward window fitted with one windscreen wiper. Aluminium painted console for gauges and controls, steering by mean of joystick. Cupboard to be fitted at aft port side for personnel effects and navigation aids and log book. Wheelhouse floor is non slip painted grey. Remainder of wheelhouse interior is exposed aluminium painted black

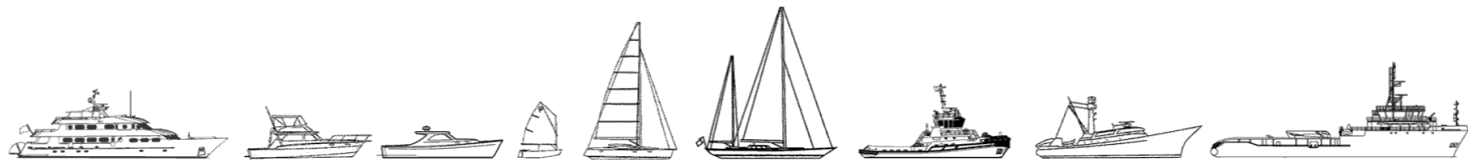


STARBOARD PROFILE



HULL PLAN

The details of all vessels are offered in good faith but we cannot guarantee or warrant the accuracy of this information nor warrant the condition of the vessel. Any buyer should instruct their agents, or their surveyors, to investigate such details as the buyer desires validated. This vessel is offered subject to sale, price change, location or withdrawal without notice.



AUSTRALIA - BULGARIA - INDIA - INDONESIA - ITALY - MALAYSIA - NEW ZEALAND - PANAMA - PHILIPPINES - SINGAPORE - SPAIN - UK - USA - VENEZUELA - VIETNAM