



SEA BOATS

MARINE BROKERS WITH A GLOBAL APPROACH

AUSTRALIA - BULGARIA - INDIA - INDONESIA - ITALY - MALAYSIA - NEW ZEALAND - PANAMA - PHILIPPINES - SINGAPORE - SPAIN - UK - USA - VENEZUELA - VIETNAM

sales@seaboats.net

www.seaboats.net

NEW BUILD - 15m Catamaran Ferry.



Listing ID - 426399

Description NEW BUILD - 15m Catamaran Ferry

Date BUILT TO ORDER

Launched

Length 15.00m

Beam 5.40m

Draft 1.20m approx

Location ex Factory, India

Broker Geoff Fraser
geoff.fraser@seaboats.net
+64 21 61 222 5

Price Notes Price depends on engine choice.

Principal Dimension

LOA: 15.00m

Length Waterline: 13.90m

Beam Overall: 5.40m

Draft (approx): 1.20m

Free Board: 1.70m

Fuel Capacity: 2000L

Water: 250L

Sullage: 250L

Hull: Catamaran Planing Hull

Construction: GRP

Propulsion

Main Engines: Cummins QSL-9 (405hp @ 2100 rpm)

Gearbox: ZF 325-1

Propulsion: Conventional Drives

Performance

Speed Cruising: 20 Knots

Speed Sprint: 22 Knot

Compliment

Passengers: 60

Crew: 3

Design Number: 871040-1

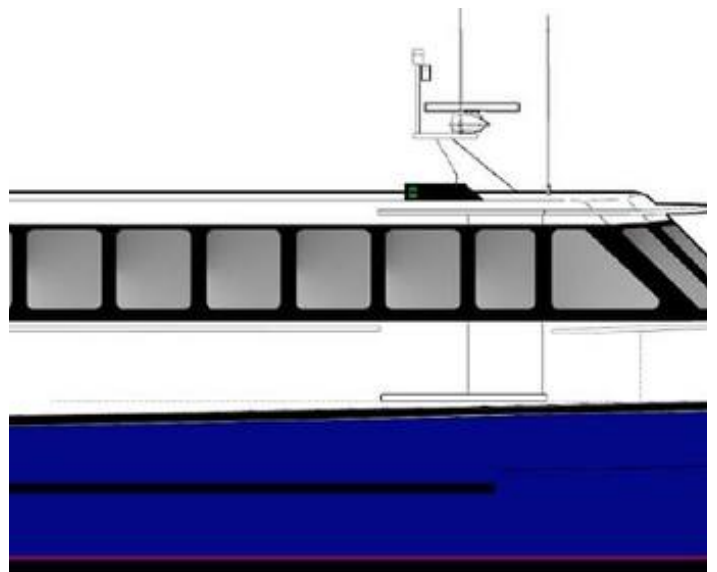
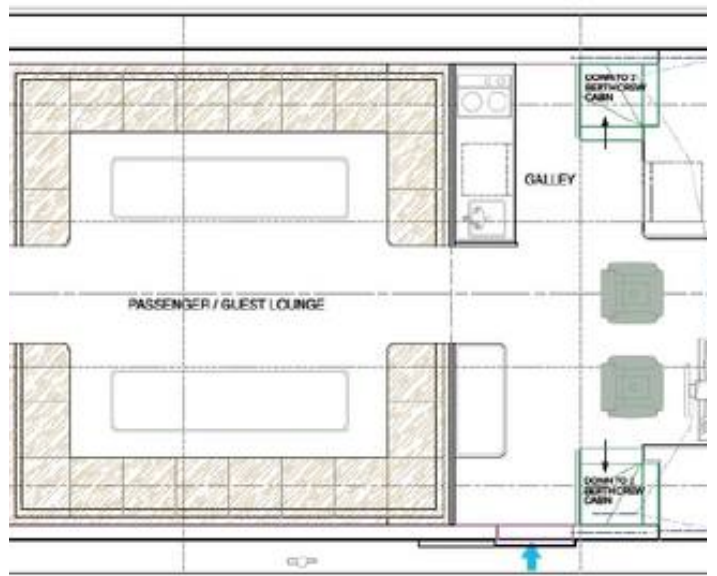
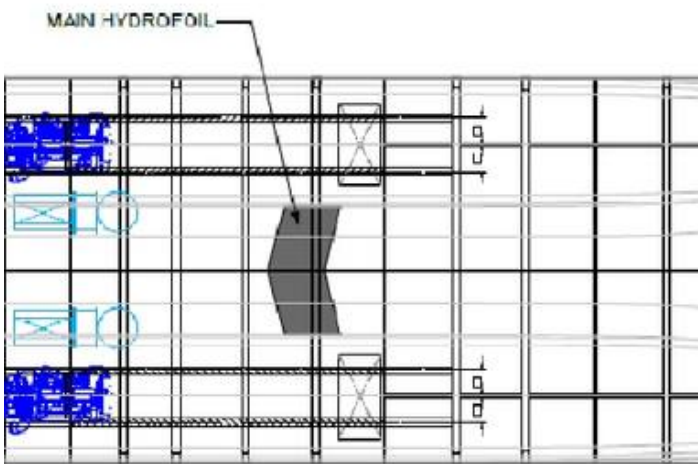
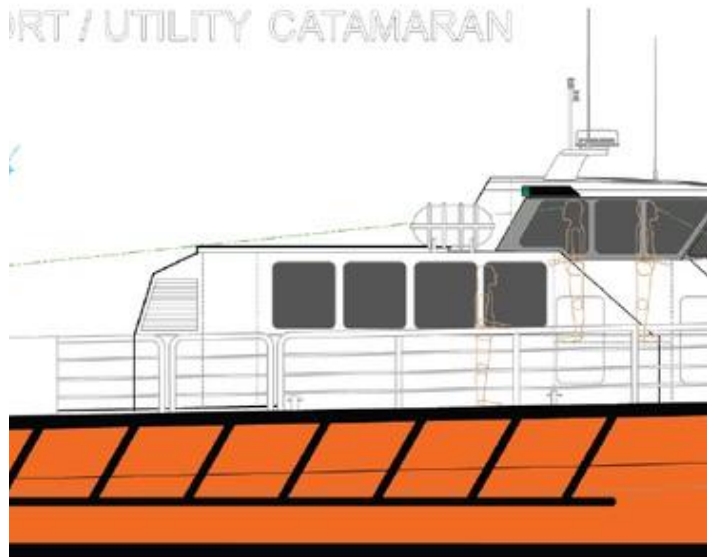
Designed by: Mark Ellis Marine Design (Australia)

This Catamaran Ferry is available either configured to go faster or slower and we can quote on a variety of specifications.



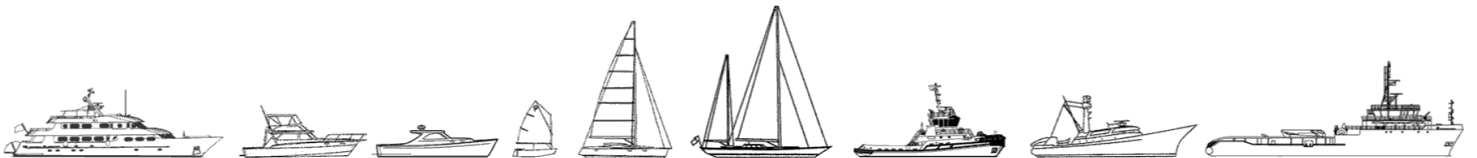


ART / UTILITY CATAMARAN





The details of all vessels are offered in good faith but we cannot guarantee or warrant the accuracy of this information nor warrant the condition of the vessel. Any buyer should instruct their agents, or their surveyors, to investigate such details as the buyer desires validated. This vessel is offered subject to sale, price change, location or withdrawal without notice.



AUSTRALIA - BULGARIA - INDIA - INDONESIA - ITALY - MALAYSIA - NEW ZEALAND - PANAMA - PHILIPPINES - SINGAPORE - SPAIN - UK - USA - VENEZUELA - VIETNAM