



SEA BOATS

MARINE BROKERS WITH A GLOBAL APPROACH

AUSTRALIA - BULGARIA - INDIA - INDONESIA - ITALY - MALAYSIA - NEW ZEALAND - PANAMA - PHILIPPINES - SINGAPORE - SPAIN - UK - USA - VENEZUELA - VIETNAM

sales@seaboats.net

www.seaboats.net

NEW BUILD - 20m Offshore Wind Farm Support Vessel



Listing ID - 428756

Description NEW BUILD - 20m Offshore Wind Farm Support Vessel

Date Launched 11- 12 months from contract signing

Length 20.10m

Beam 7.00m

Draft 1.00m

Location ex factory, China

Broker Geoff Fraser
geoff.fraser@seaboats.net
+64 21 61 222 5

Price USD 2.3m

HIGHLIGHTS

1. Designer: World renowned defence and offshore vessels designer and engineering company UK's **BMT Nigel Gee Ltd.**
2. Proven reliable performance: This proven hull has been re-built by a series of international shipyards that are acting like Kingtough as partners of BMT Nigel Gee Ltd.

INTRODUCTION

This design has been specifically configured by BMT Nigel Gee to carry 12 passengers and enable the vessel to carry a combination of up to three standard 10 ISO containers, one aft and two forward. The ISO containers will carry the necessary supplies and equipment for the offshore servicing tasks. In

addition the foredeck layout has been expressly configured to incorporate the new Turbine Access System (TAS) being developed by **BMT** and **Houlder** to provide safer access to the turbine structures.

PRINCIPAL PARTICULARS

Hull Length: 20.10m

Length Waterline: 18.8m

Moulded Beam (Max):7.00m

Hull Draught: 1.00m

DEADWEIGHT

Maintenance Technicians: 12

Crew: 3

Technician's Equipment: 0.5 tonnes

Fuel: 4.3 tonnes

Fresh Water: 0.5 tonnes

Black Water: 0.5 tonnes

General Stores: 0.2 tonnes

Fore Deck Cargo: 3.0 tonnes

TAS (Turbine Access System): 1.25 tonnes

PROPULSION:

Main Engine: 2 x MTU 8V2000M72 720kW

Water Jets: Hamilton HM571

PERFORMANCE AND RANGE:

Service Speed: 25 knots

CLASSIFICATION:

GL 100 A5 II HSDE Work Boat / (+) MC



004.jpg



005.jpg



006.jpg



007.jpg



008.jpg

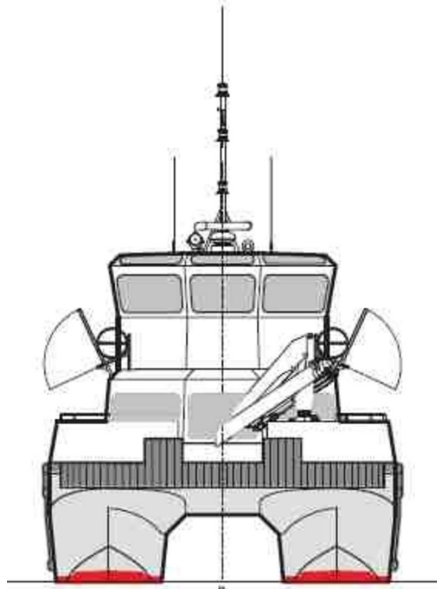


009.jpg

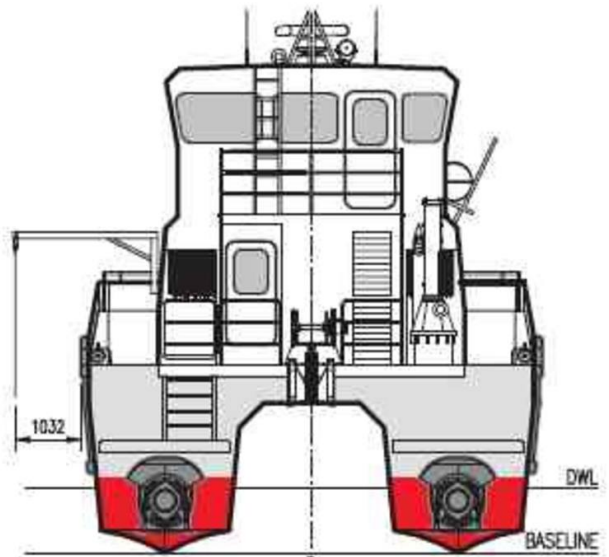


010.jpg

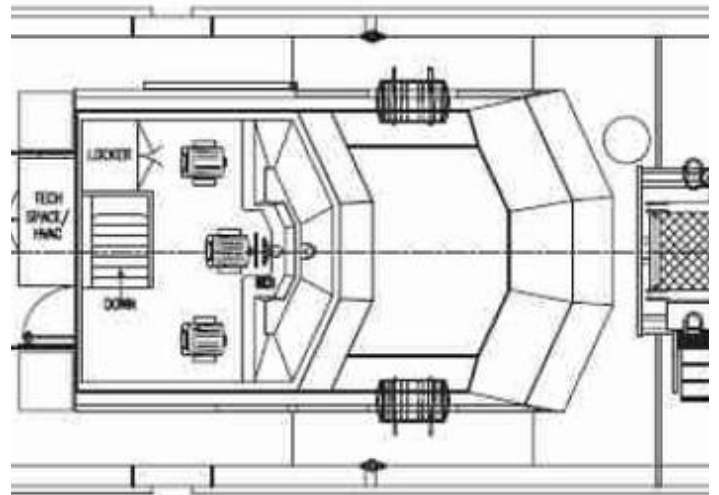
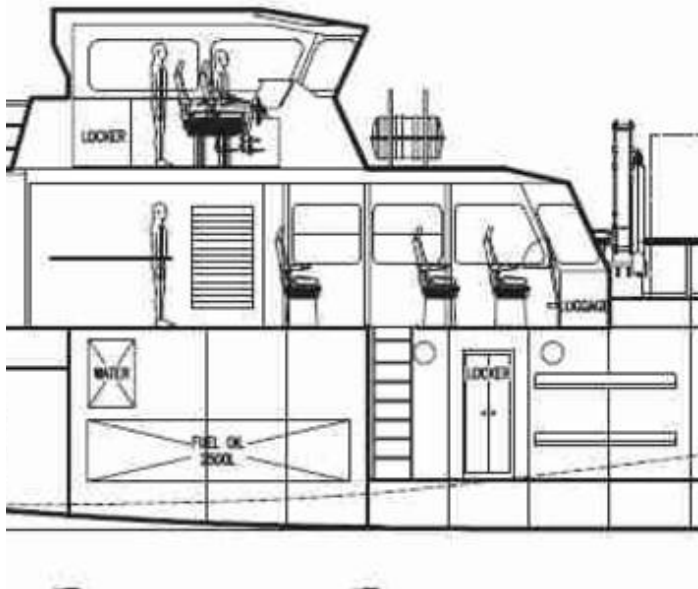




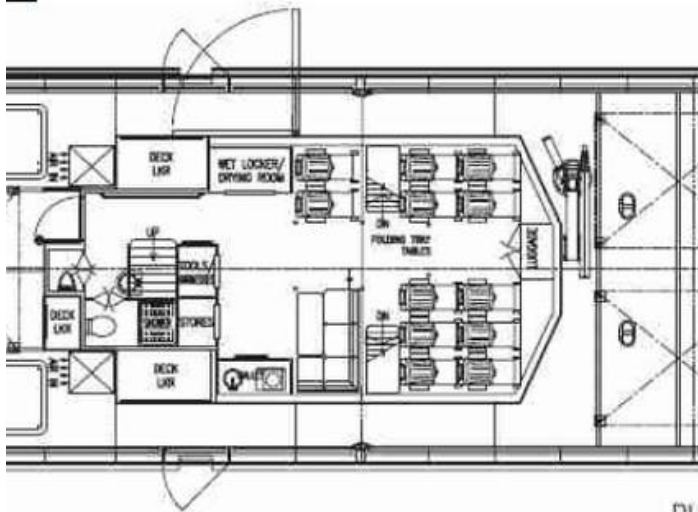
VIEW ON BOW



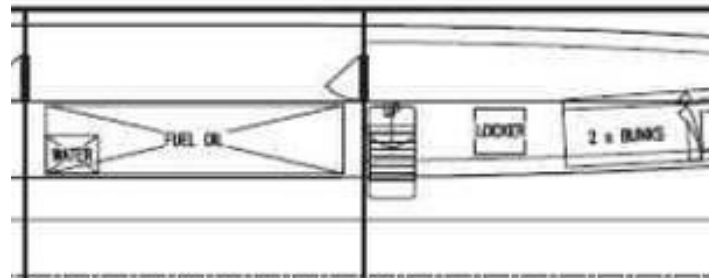
VIEW ON TRANSOM



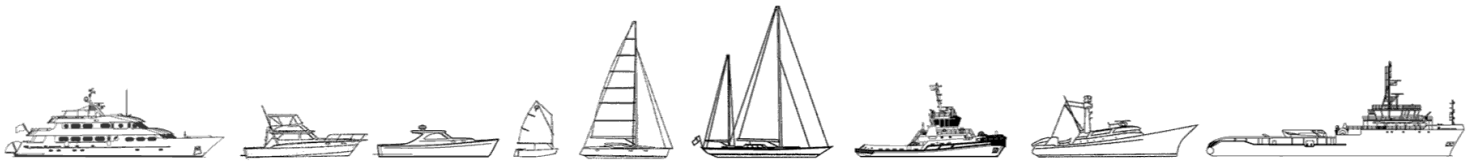
ck



PLU



The details of all vessels are offered in good faith but we cannot guarantee or warrant the accuracy of this information nor warrant the condition of the vessel. Any buyer should instruct their agents, or their surveyors, to investigate such details as the buyer desires validated. This vessel is offered subject to sale, price change, location or withdrawal without notice.



AUSTRALIA - BULGARIA - INDIA - INDONESIA - ITALY - MALAYSIA - NEW ZEALAND - PANAMA - PHILIPPINES - SINGAPORE - SPAIN - UK - USA - VENEZUELA - VIETNAM