



# SEABOATS

MARINE BROKERS WITH A GLOBAL APPROACH

AUSTRALIA - BULGARIA - INDIA - INDONESIA - ITALY - MALAYSIA - NEW ZEALAND - PANAMA - PHILIPPINES - SINGAPORE - SPAIN - UK - USA - VENEZUELA - VIETNAM

[sales@seaboats.net](mailto:sales@seaboats.net) - [www.seaboats.net](http://www.seaboats.net)

## 28m Motoryacht – Luxury Long Range Cruiser



### Listing ID - 1379

Description	28m motoryacht
Date Launched	Under Construction
Length	28.50m (93ft 6in)
Beam	7.21m (23ft 7in)
Draft	2.35m (7ft 8in)
Location	Italy
Broker	Clive Bennett <a href="mailto:clive.bennett@seaboatsbrokers.com">clive.bennett@seaboatsbrokers.com</a> +64 27 494 9799
Price	EUR 7.080.000,00 (Ex VAT)

### Overview:

This outstanding and versatile vessel is currently under construction in a prominent Italian Shipyard. It has been designed for Owners who want to experience the sea without compromise and appreciate comfortable outdoor spaces and equally comfortable interiors. It is ideally suited for both personal use and potential for charter business. As shown in the interior plans it is offered with 3 or 4 cabins, and a version with 5 cabins. From the maritime point of view the vessel has well-engineered constructive qualities and safe navigation systems.

LOA: 28.5m  
Length Lh ISO 8666: 23.95m  
Beam Max: 7.21m  
Beam w.l.: 6.95m  
Draft: 2.35m  
Displacement: 165 ton

## **CONSTRUCTION MATERIAL**

Hull material: Steel Fe510 (AH-36)

Superstructures: Aluminium AA5083 (Al-Mg4.4)

## **MAIN ENGINES – PERFORMANCE**

Main Engine: 2x MAN 412kw (560 CV)

Max speed knots: 12.5

Cruising speed knots: 10

Range at cruising speed miles: 3000

## **TANKS CAPACITY**

Fuel tanks: 30,000 litres

Daily fuel tanks: 1,500 litres

Fresh Water tanks: 3,000 litres

Grey / black water tanks: 700 + 700 litres

Sludge / Bilge tanks: 300 litres

## **CERTIFICATION**

Certification: CE Cat. "A"

Certifier: RINA

## **ANCHORS – CHAINS**

Anchors: 2x 120 kgs

Shackles of chains / diameter: 2x 6 / 14mm

## **WINDLASS – CAPSTANS**

Electric Windlass: 2x 4kw 380V

Stern Capstans: 2x 3kw

## **SHAFTS – PROPELLERS – RUDDER**

Tailshafts: 2x diam 90

Propellers: 2x 5 fixed blades

Rudders: 2x spada (sword)

## **MANOEUVRING PROPELLERS – STABILIZERS**

Bowthruster: 1x 38kw

Fins stabilizers: Zero Speed electric

Engine radio control or 2<sup>nd</sup> station

## **MAIN AUXILIARIES**

Generators: 2x 40kW

Air conditioning: 180,000 BTU

Watermaker: 1x 300 lt/h

Black Water Treatment:1

Alfa Laval: 1

Fresh Water pump: 2

Boiler: 2x 100 litres

Galley sink with macerator

Compressed air system

Battery Charge: 2  
Inverter 5kw  
Cameras: 3  
Monitor Video Control: 1  
Washing Machine: 1  
Dryer Machine: 1  
Dishwasher: 1  
Monitoring and control touch screen: 4  
Icemaker in the galley and upper deck

### **DECK ACCESSORIES**

Gangway length over platform  
Hydraulic stern platform capacity  
Bathing ladder  
Crane  
Search light  
Electric Cable Winder  
Fridge on the upper deck  
Under Water lights  
Various bimini and cover  
Inflatable fenders  
Life Rafts  
Shower at stern and upper deck

### **NAVIGATION SYSTEM**

2x monitor in wheelhouse  
1 Radar  
1 Echosounder  
1 Automatic Pilot  
1 Magnetic Compass  
1 VHF DSC  
1 VHF  
1 EPIRB  
1 GPS

### **ENTERTAINMENT**

TV 40" in the guest cabins  
TV 46" in the owner's cabin  
TV 50" in the saloon  
TV 55" in the upper lounge  
TV in the crew mess  
Wifi in each cabin / saloon  
Satellite antenna TV diameter 40"  
Digital Terrestrial Antenna  
Stereo System Inside and Outside

### **ACCOMMODATION**

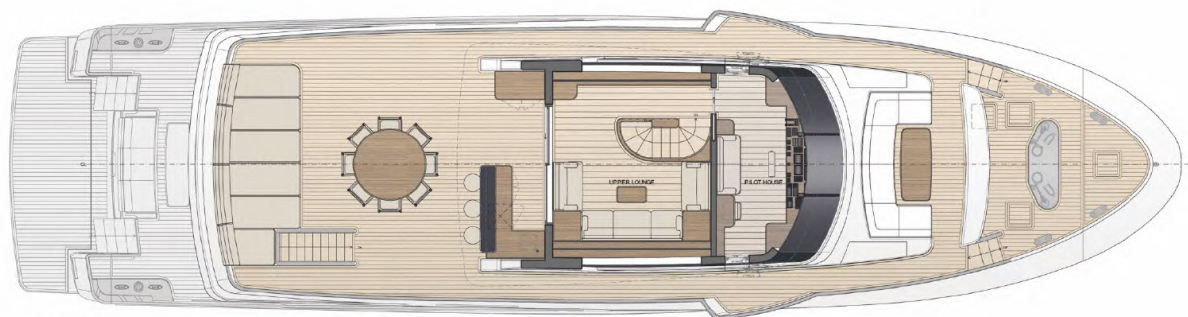
Owner's cabin with bathroom  
Double Guests Cabin with bathroom  
Twin Guests Cabin with bathroom

Saloon with dinner area  
Upper Lounge  
Day Toilette  
Galley  
Crew Cabin with bath  
Captain's Cabin with bath  
Crew Dinette

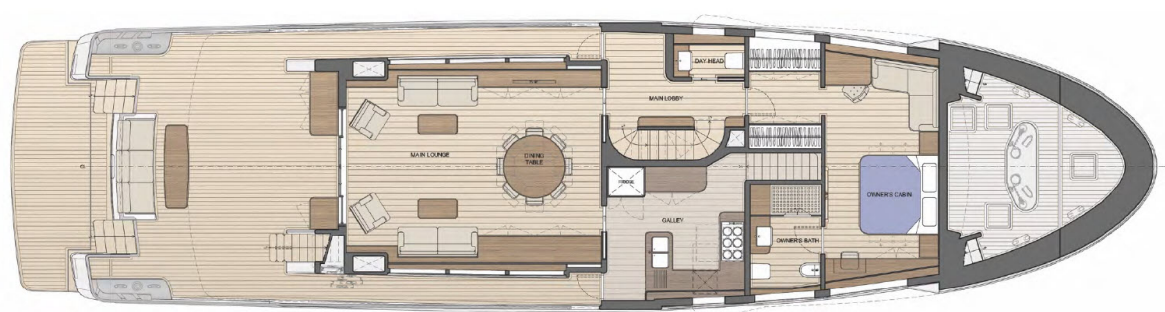
### EXTRA

Aluminium version Semi-displacement: EUR 800,000  
Engines 2x MAN 478 kW (650HP): EUR 56,000  
Engine Radio control or 2<sup>nd</sup> Station  
Stern Thruster  
2<sup>nd</sup> Watermaker 300 litres / hr  
Sat phone  
Metallic Paint  
Thermal Camera  
Jacuzzi  
Tropical Air Conditioning





UPPER DECK



MAIN DECK "A"



MAIN DECK "B"



LOWER DECK "A"





LOWER DECK "C"



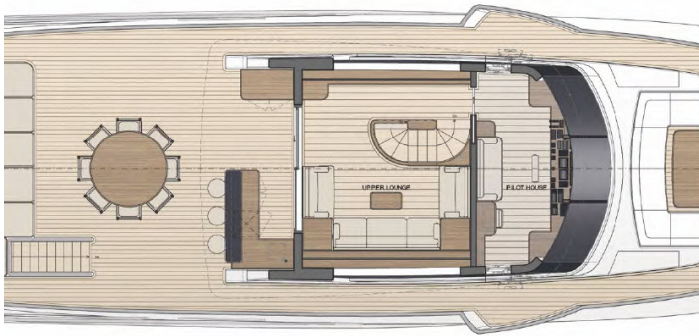












The details of all vessels are offered in good faith but we cannot guarantee or warrant the accuracy of this information nor warrant the condition of the vessel. Any buyer should instruct their agents, or their surveyors, to investigate such details as the buyer desires validated. This vessel is offered subject to sale, price change, location or withdrawal without notice.



AUSTRALIA - BULGARIA - INDIA - INDONESIA - ITALY - MALAYSIA - NEW ZEALAND - PANAMA - PHILIPPINES - SINGAPORE - SPAIN - UK - USA - VENEZUELA - VIETNAM