



# SEABOATS

MARINE BROKERS WITH A GLOBAL APPROACH

AUSTRALIA - BULGARIA - INDIA - INDONESIA - ITALY - MALAYSIA - NEW ZEALAND - PANAMA - PHILIPPINES - SINGAPORE - SPAIN - UK - USA - VENEZUELA - VIETNAM

[sales@seaboats.net](mailto:sales@seaboats.net) - [www.seaboats.net](http://www.seaboats.net)

## New 39m Fast Crew Supply Transporter.



### Listing ID - 1847

**Description** 39m Fast Crew Supply Transporter

**Date** Built to order

**Launched**

**Length** 39m (127ft 11in)

**Beam** 7.6m (24ft 11in)

**Location** Singapore

**Broker** John Kearns  
[john.kearns@seaboatsbrokers.com](mailto:john.kearns@seaboatsbrokers.com)  
+64 21 400 805

**Price** POA

Length O. A.: 39m

Beam Moulded: 7.6m

GT / NT: 267 / 80

Classification: Bureau Veritas

Flag: Panama

### Propulsion System

Main Engines: 3 x Baudouin 12 M26.3 P2

Power: 3 x 1500bhp @ 2200 rpm

Engine rating: Heavy Duty (5000 hrs/yr)

Gearboxes: 3 x ZF 3050

Propellers: 3 x Fixed Pitch NIALBR

Bow Thruster: 1 x twin counter rotating 5 bladed

Rating: 1,100kg intermittent thrust

### **Capacities**

Fuel Oil: 81,000 litres (approx.)

Freshwater: 25,000 litres (approx.)

Cargo Deck: 110 sq. metres (approx.)

Crew: 8

### **Generators**

Aux Engines: 2 x Baudouin 6W1055

Power: 2 x 92 kW @ 1500 rpm

Alternators: 2 x Leroy Somer

Electrical Supply: 415/230VAC 50 Hz, 24VDC

### **Performance**

Speed (Max): More than 31 knots

Speed (Cruising): 28 knots @ 85% MCR

### **Deck Equipment**

Anchor: 1 x 195kg HHP c/w steel wire

Anchor Windlass: 1 x Palmarine

Workboat c/w davit: Fitted

### **Accommodation and Seating**

Seating Class: 72 Business Class Reclinable Seats

Ship's Office: Fitted at main deck

Cabin / Bunk: 4 / 8

Freezer and Chiller: Fitted, walk-in type

Air Conditioning: Central type for all areas

### **Safety and Emergency Response**

Life rafts: 4 x 50 men + 1 x 10 men

IMDG: In compliance

FIFI Pump: 800 m<sup>3</sup>/hr

FIFI Monitor: Remote controlled

Water curtain: fitted

### **Navigation and Communication Equipment**

Radar (Main): JRC JMA-5212- 4HSBB

Radar (Secondary): JRC JMA-3336

Search light: 3 x 1000W

Magnetic Compass: Seastrel FW7700

GPS Compass: JRC JLR-21

GPS: Furuno GP-32

Echo Sounder: JRC JFC-7050

Anemometer: Alpha wind WSO 100

AIS: JRC JHS 183

Autopilot: AlphaSeaPilot

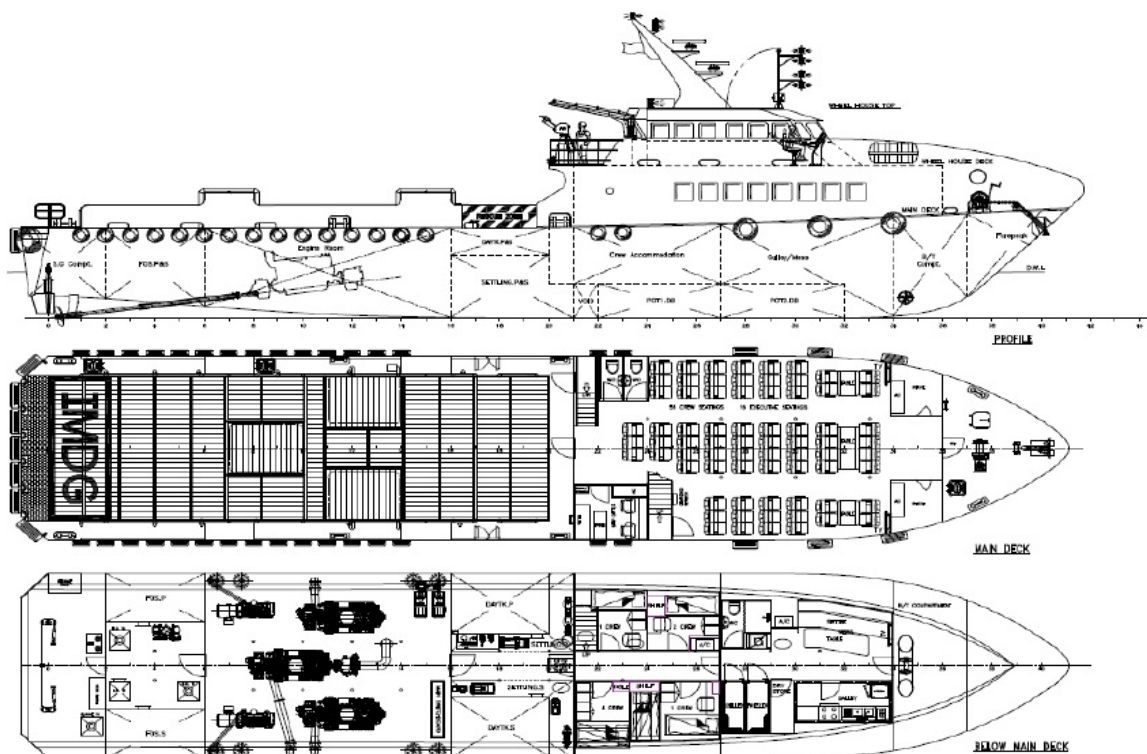
SSAS: JRC JUE-770S (A1 +A2)

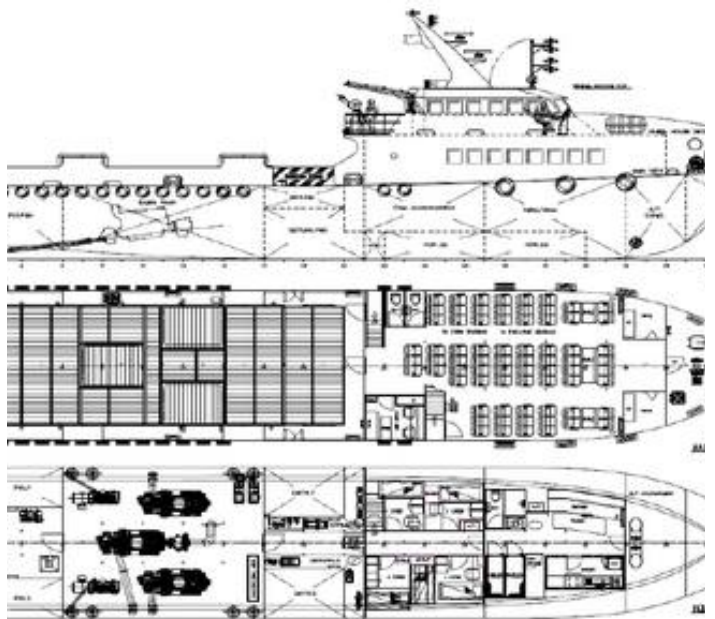
Fuel consumption as below.

From sea trial (Dwt at 31.5ton)		
23.15 knots	1800 RPM (53% MCR)	450 l/hr
25.00 knots	1911 RPM (65% MCR)	525 l/hr
27.31 knots	2050 RPM (85% MCR)	720 l/hr
30 knots	2200 RPM (100% MCR)	840 l/hr

Currently not installed with watermaker. Can be installed if required.

PAX seats be taken out and a couple more 2 place cabins be installed.

















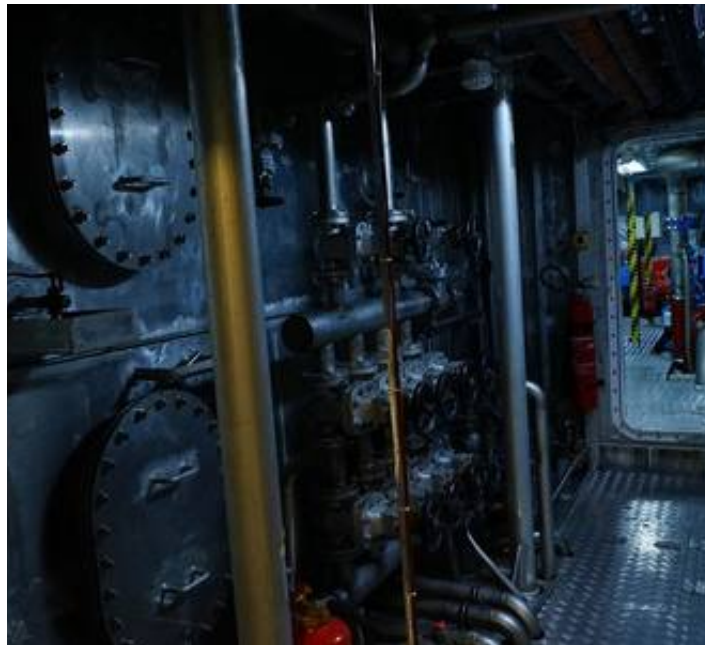


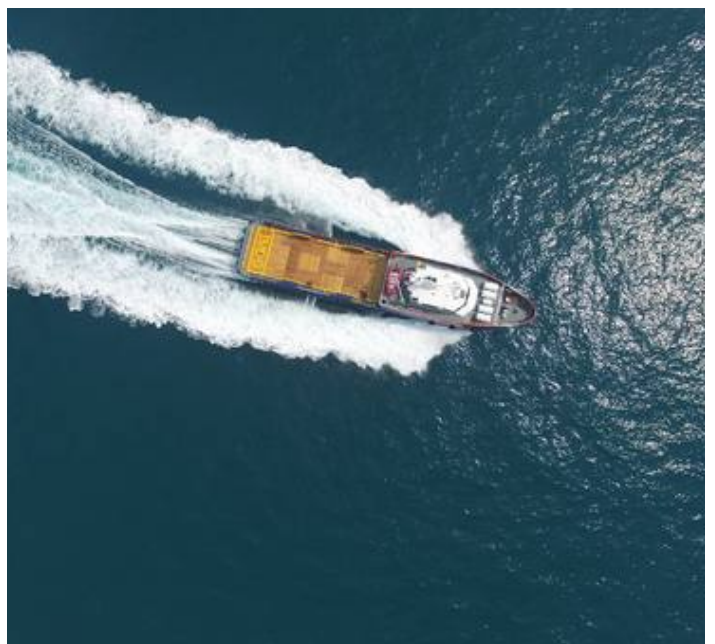








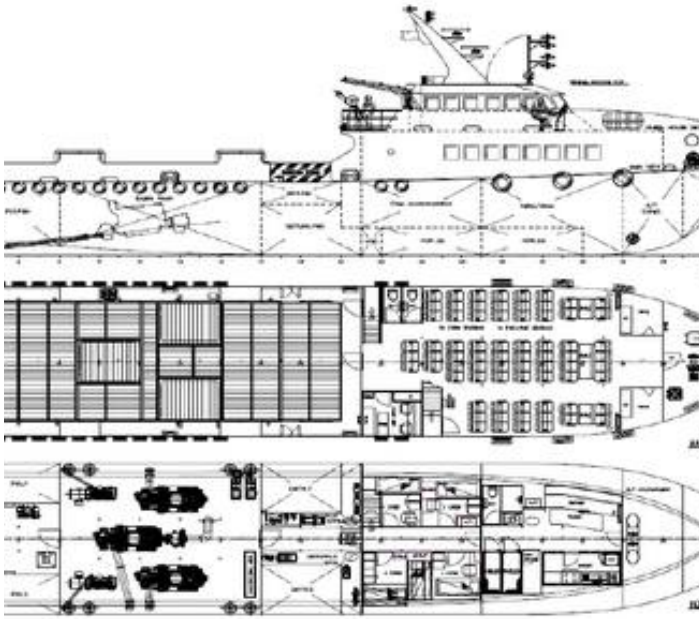


















The details of all vessels are offered in good faith but we cannot guarantee or warrant the accuracy of this information nor warrant the condition of the vessel. Any buyer should instruct their agents, or their surveyors, to investigate such details as the buyer desires validated. This vessel is offered subject to sale, price change, location or withdrawal without notice.

