



# SEABOATS

MARINE BROKERS WITH A GLOBAL APPROACH

AUSTRALIA - BULGARIA - INDIA - INDONESIA - ITALY - MALAYSIA - NEW ZEALAND - PANAMA - PHILIPPINES - SINGAPORE - SPAIN - UK - USA - VENEZUELA - VIETNAM

[sales@seaboats.net](mailto:sales@seaboats.net) - [www.seaboats.net](http://www.seaboats.net)

## NEW BUILD - 120m Accommodation Barge



### Listing ID - 472128

**Description** NEW BUILD - 120m Accommodation Barge

**Date** BUILT TO ORDER

**Launched**

**Length** 120.0m (393.6 ft)

**Beam** 31.7m (104 ft)

**Draft** 9.0m (29.5 ft)

**Location** China

**Broker** Geoff Fraser  
[geoff.fraser@seaboats.net](mailto:geoff.fraser@seaboats.net)  
+64 21 61 222 5

**Price** The price will be USD 32 million according to ABS/CCS or ZC Class will be USD 30 Million.

### MAIN FEATURE

The barge is to be constructed, machinery installed and equipment in accordance with the latest Rules for Building & Classification of Steel Barges of American Bureau of Shipping for class Maltese Cross + A1 Barge for unrestricted service with descriptive notation of MODU code and registry PANAMA Flag.

The barge is all welded steel construction. The barge's accommodation is to be located on the forward main deck. The main hull is to be divided by transverse and longitudinal WT bulkheads into the following compartments

- 1) Forepeak FW/SWB tank
- 2) FW/SWB
- 3) Winch compartments

- 4) Engine room with fuel oil double bottom tanks
- 5) Fresh water tanks
- 6) Pipe tunnel
- 7) Dirty oil tanks
- 8) Sewage tank

Vessel is equipped with Accommodations for 300-people. The barge is to be installed the 300T main crane (was made of husiman), 26T aux crane, the 8-point mooring system

120m accommodation barge Principal Particulars

### **1. Principal Particulars**

Class notation Maltese Cross + A1

Year Built: 2012

Trading Limitation: unrestricted service

Length overall: 120.0m (393.6 ft)

Beam moulded: 31.7m (104 ft)

Depth moulded: 9.0m (29.5 ft)

Draft designed: 6.0 m (approx.)

### **Superstructure Deck Heights**

Deckhouse: 3.00M approx

### **Accommodation**

8 x 1-berth cabins: 8 men

14 x 2-berth cabins: 28 men

66 x 4-berth cabins: 264 men

Total: 300 men

**Tankage-** approx (100% full)

SWB/FW tank (Non-Potable): 8000m<sup>3</sup> approx.

F.W. Tank (Potable) (60 days endurance): 2000m<sup>3</sup> approx.

F.O. Tank: 1200 M<sup>3</sup> approx.

Dirty Oil Tank: 15 M<sup>3</sup> approx.

Main Deck Strength: 15 tonnes/ M2

### **Main Machinery & Equipment**

#### **Deck Machinery**

**8-point mooring system:** 8 electro-hydraulic mooring winches, each 90mt x 12m/min, brake holding 180t on 1st layer, c/w vertical Sheaves, universal fairleads, load monitoring system, tension sensor, load monitoring system, remote control

**Capstan:** Type: 4x Vertical mount; Duty pull: 10 tonnes x 0 – 15 m/min

**Tugger Winch:** Pull: 15 tonnes

**Steel Wire Rope:** 52mm dia x 1500m each, c/w Crosby socket

**10T Delta flipper anchor:** 10,000kg each

**Pedestal Mounted offshore crane:** 300 Tons SWL

**Electric-Hydraulic Slewing Crane:** 25T 5-26m, 12t 5.6-26.7m

#### **Machinery**

**Main Generator:** CATERPILLAR 3412C; Rated power:620KW; No. of cylinder:V12;

BORE/STROKE:137×152Rated revolution 1800r/min; Leroy somer; Rated power:590KW; Rated

revolution:1800r/min; Rated Voltage/Current:440V; No. of phase/Frequency :3Ph/60HZ

**Emergency Generator:** CATERPILLAR C4.4; Rated power:106KW; No. of cylinder:4; BORE/STROKE:105×127; Rated revolution 1800r/min; Caterpillar SR4; Rated power:95KW; Rated revolution:1800r/min; Rated Voltage/Current:440V; No. of phase/Frequency :3Ph/60HZ

**Ballast Pump:** PUMP: DESMI NSL 200-415-D02; CAPACITY:500 M3/HR; TOTAL HEAD:50 METER; MATERIAL: CASING&IMPELLER BRONZE; SHAFT:STAINLESS STEEL; MOTOR: CLASS F INSULATION; POWER:108kw

**Bilge Pump:** (2)PUMP: DESMI S125-220N/D07; CAPACITY:130M3/HR; TOTAL HEAD:79 METER; MATERIAL: CASING&IMPELLER BRONZE; SHAFT:STAINLESS STEEL; MOTOR: CLASS F INSULATION; POWER:66kw

**Fire & General service pump:** PUMP: DESMI S125-80-220N/D07; CAPACITY:130 M3/HR; TOTAL HEAD:79 METER; MATERIAL: CASING&IMPELLER BRONZE; SHAFT:STAINLESS STEEL; MOTOR: CLASS F INSULATION; POWER:66kw

**Fuel Oil Transfer Pump:** PUMP: DESMI GP101EFM; CAPACITY:42 M3/HR; TOTAL HEAD:45 METER; MATERIAL: CASING CAST IRON; IMPELLER CARBON; MOTOR: CLASS F INSULATION; POWER:9kw

**Fuel oil transfer pump:** PUMP: DESMI HD201EFM; CAPACITY:118 M3/HR; TOTAL HEAD:60 METER; MATERIAL: CASING CAST IRON; IMPELLER CARBON; MOTOR: CLASS F INSULATION; POWER:34kw

**FW pressure set:** Each comprising: - 1 pressure tank 2000 ltr, c/w relief; valve, pressure switch, pressure gauge etc.; 2 pumps, 40m3/hr, 50m head

**Potable water pressure set:** Each comprising:- 1 pressure tank 2000 ltr, c/w relief; valve, pressure switch, pressure gauge etc.; 2 pumps, 40m3/hr, 50m head

**S.W pressure set:** Each comprising: - 1 pressure tank 2000 ltr, c/w relief valve, pressure switch, pressure gauge etc.; 2 pumps, 40m3/hr, 50m head

**Fresh water transfer pump:** PUMP: DESMI S100-80-220N/D07; CAPACITY:120M3/HR; TOTAL HEAD:60 METER; MATERIAL: CASING BRONZE; IMPELLER NIALBZ; MOTOR: CLASS F INSULATION; POWER:36kw

**Calorifier:** CAPACITY:1000L SS316; C/W hot water circ. Pump; 4m3/h @ 40m head

**Sewage treatment plant:** SBH-150; Maximum 150 persons /day; C/W discharge pump CR-50S; Comply with MEPC 159(55)

**Oily water separator:** USH-10 C/W 15PPM ALARM; Comply with MEPC 107(49)

**Fire pump:** PUMP: DESMI NSL200-525/D02; CAPACITY:227M3/HR; TOTAL HEAD:120 METER; MATERIAL: CASING BRONZE IMPELLER NIALBZ; MOTOR: CLASS F INSULATION; POWER:192kw

**Emergency fire pump:** PUMP: DESMI S80-70-220N/D07; CAPACITY:80M3/HR; TOTAL HEAD:69 METER; MATERIAL: CASING BRONZE; IMPELLER NIALBZ; MOTOR: CLASS F INSULATION; POWER:36kw

**Fuel oil purifier:** SJ20G 2600L/h 14cst@40 !

**Main air compressors:** CY90-160 22.3m/min@8.5bar

**Refrigerated air dryer:** D2100INR-A 35m/min

**Air compressor SW cooling pump:** PUMP: DESMI SA50-180/4 D07; CAPACITY:9M3/HR; TOTAL HEAD:40 METER; MATERIAL: CASING BRONZE; IMPELLER NIALBZ; MOTOR: CLASS F INSULATION; POWER:4.8kw

**R.O. water maker:** SW 60T R CAP :60m3/day

**Air-conditioning system:** 2×100% Capacity chiller units; 1×Air handling unit Serve acc. Deck-D; 1×Air handling unit Serve acc. Deck-C; 1×Air handling unit Serve acc. Deck-B; 1×Air handling unit Serve acc. Deck-A

**ECR air-con packaged unit**

**Galley air-con packaged unit**

## **Provision refrigeration system**

### **Electrical Equipment**

**Main Switchboard:** Include: BUS A & BUS C Feeder panel; BUS A AC 440V Feeder panel; !1 GEN Panel; !2 GEN Panel; !3 GEN Panel; SYNCHRO & BUSTIE Panel; !4 GEN Panel; !5 GEN Panel; BUS B AC 440V feeder panel; Shore & Main crane panel

Emergency switchboard

Distribution switchboard

### **Communication and Navigation Equipment**

X-BAND RADAR

GPS

SATELLITE COMPASS

ECHO SOUNDER

NAVTEX RECEIVER

WEATHER FAX RECEIVER

WIND AMEMOMETER

VHF RADIO

AIRBAND VHF RADIO

FBB SATELLITE PHONE

GMDSS AREA A3 RADIO CONSOLE

MF/HF SSB RADIO (250W)

VHF DSC RADIO

INMARSAT-C /SSAS

INMARSAT-C

DUPLICATION MF/HF SSB (150W)

DUPLICATION VHF DSC

DUPLICATE INMARSAT-C

GMDSS EPIRB

GMDSS SART

GMDSS 2 WAY PORTABLE VHF

I.S PORTABLE VHF RADIO

NON-DIRECTIONAL RADIO BEACON

INTEGRATED TELEPHONE SYSTEM

PUBLIC ADDRESS SYSTEM

TALKBACK SYSTEM

BATTERYLESS TELEPHONE SYSTEM

CCTV SYSTEM

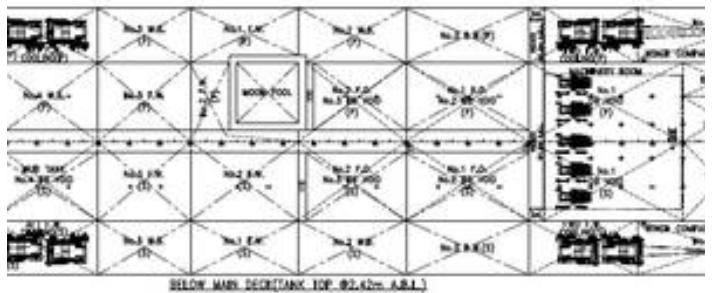
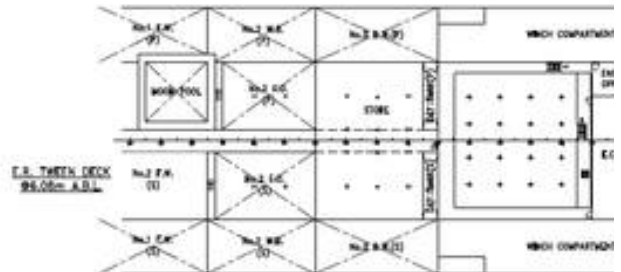
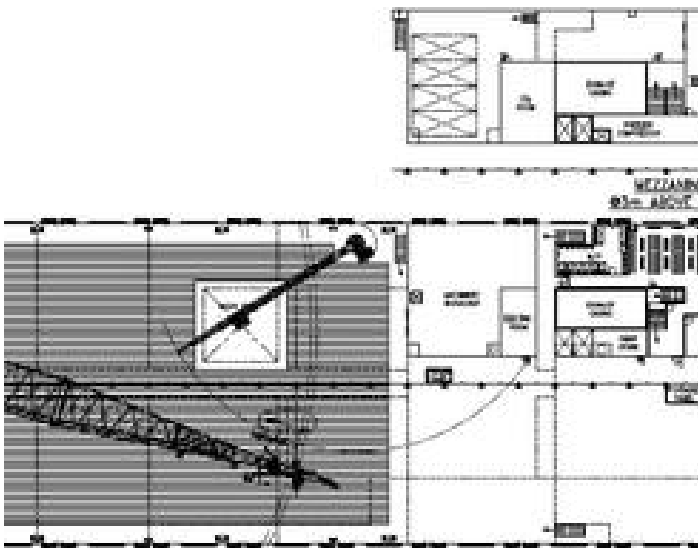
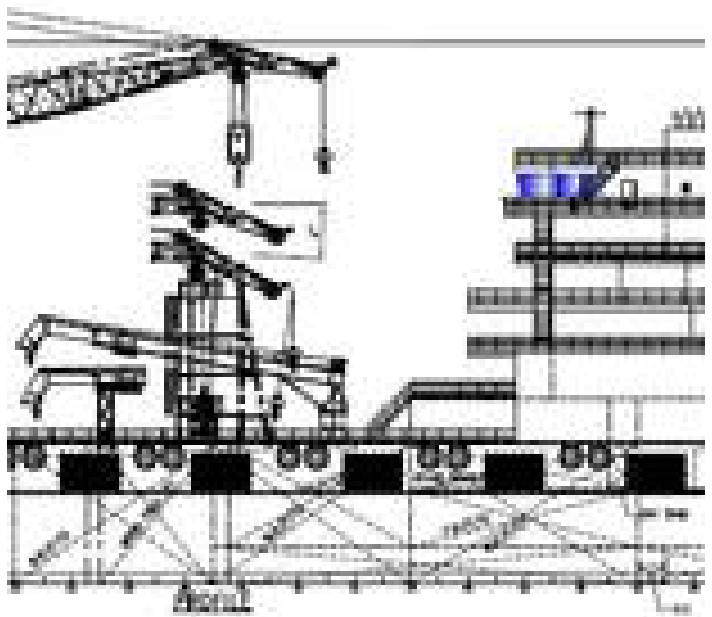
ENTERTAINMENT TV ANTENNA



001.jpg



002.jpg







The details of all vessels are offered in good faith but we cannot guarantee or warrant the accuracy of this information nor warrant the condition of the vessel. Any buyer should instruct their agents, or their surveyors, to investigate such details as the buyer desires validated. This vessel is offered subject to sale, price change, location or withdrawal without notice.



AUSTRALIA - BULGARIA - INDIA - INDONESIA - ITALY - MALAYSIA - NEW ZEALAND - PANAMA - PHILIPPINES - SINGAPORE - SPAIN - UK - USA - VENEZUELA - VIETNAM