



# SEA BOATS

MARINE BROKERS WITH A GLOBAL APPROACH

AUSTRALIA - BULGARIA - INDIA - INDONESIA - ITALY - MALAYSIA - NEW ZEALAND - PANAMA - PHILIPPINES - SINGAPORE - SPAIN - UK - USA - VENEZUELA - VIETNAM

[sales@seaboats.net](mailto:sales@seaboats.net) - [www.seaboats.net](http://www.seaboats.net)

## NEW BUILD - 15m Pilot Boat



### Listing ID - 580197

**Description** NEW BUILD - 15m Pilot Boat

**Date Launched** BUILT TO ORDER

**Length** 15.00m

**Beam** 4.40m

**Draft** 1.35m

**Location** ex SeaBoats in New Zealand or take deliver ex factory, HongKong

**Broker** Geoff Fraser  
[geoff.fraser@seaboats.net](mailto:geoff.fraser@seaboats.net)  
+64 21 61 222 5

**Price** POA

### Overview

The design was developed by Cheoy Lee's design office as a fast 15m launch for the Hong Kong Fire Services department. Following that over 30 units have been built with slightly varying lengths as a harbour launch. This hull is now used for the new generation of Pilot Launches as the size and performance has proven a huge success. A well proven design with some recent laminate changes to achieve better laminate weight and increased performance. This design should be considered the benchmark for Pilot Launches.

LOA: 15.00m

Length W.L.: 13.65m

Breadth Mld: 4.40m

Depth Mld: 2.33m  
Draft (max):1.35m

Main Engines:

2x Man D2876 LE403, 450 hp (331 kW) @1800 rpm  
or  
2x Caterpillar C18 ACERT, 479 hp (357 kW) @1800 rpm

Gearboxes

2x Twin Disc MGX 5114A (MAN)  
or  
2x Twin Disc MGX 5135A (CAT)  
Generating Set: Kohler 17EFOZD, 17 kW @ 230/1/50

Steering System: Shipset: Marol Hydraulic  
Engine Control: 1x Kobelt 6505S  
F.O. Filters / Separators: Shipset; Racor 1000 & 500  
Flexible Couplings: 2x Globe Drivesaver  
F.O. Flow Meters: Shipset; Nitto Seiko  
Fresh Water Pressure Set: 1x ITT Jabsco Par-Max 2+  
Bilge Pumps: 7x ITT Rule 2000  
Bilge Pump (AC): 1x Bombas Azcue CA-50-2  
Emergency Bilge Pump: 1x Whale Gusher 30

Rubber Fender: Shipset; Trelleborg Hercules  
Sliding Fender: Shipset; Trelleborg Hercules  
Anchor / Anchor Chain: Chinese make  
Toilet: 1x Raritan, manual type  
Aluminium Windows: Shipset; Hai Xiang / Beta  
Flush Aluminium W.T. Hatches: 4x Bomar / Freeman  
Fuel Tank Gauge: 1x VDO / Itim  
Interior Panelling: Shipset; Forex PVC boards  
Interior Lights: Shipset; Cheoy Lee  
Navigation Lights: Aqua Signal Series 40  
Electric Horn: Marco  
Helmsman + Passenger Seats: 2 + 8; Bostrom Sea Post  
Life Jackets: 12 (Chinese make)  
Lifebuoys: 2 Viking  
Portable Fire Extinguishers: Eversafe (Shipset)  
Air Conditioning Plant: Cruisair VCD27, VCD18, VTD12 (Shipset)  
Engine Room Ventilators: Meta-Vent ((Shipset)  
Paint: International Paint  
Main Switchboard + Distribution Boards: Cheoy Lee  
Electric Cables: Draka  
Window Wipers: 3x Exalto 223BD  
VHF Radio Telephone: 1x Motorola GM-338  
AIS: 1x JRC JHS-183  
Electronic Navigational Chart with GPS: Lowrance HDS-10  
Public Address System: 1x SEA 857  
Searchlight: 1x Francis L300 RC

Video Recording: HIK Vision

Remote Fuel Monitoring (Option): eGenKit



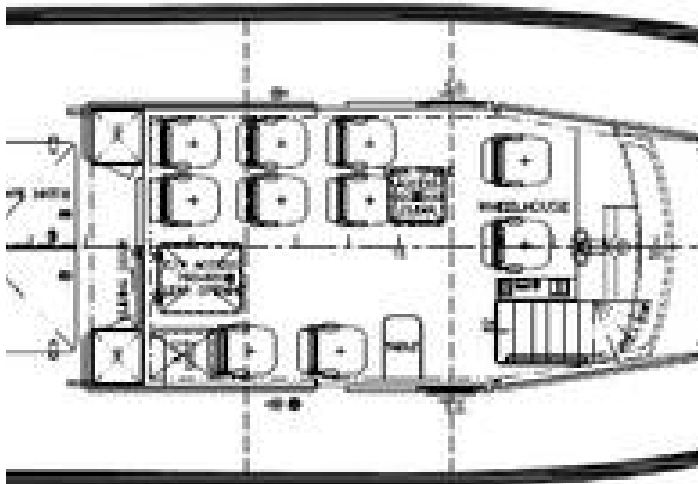
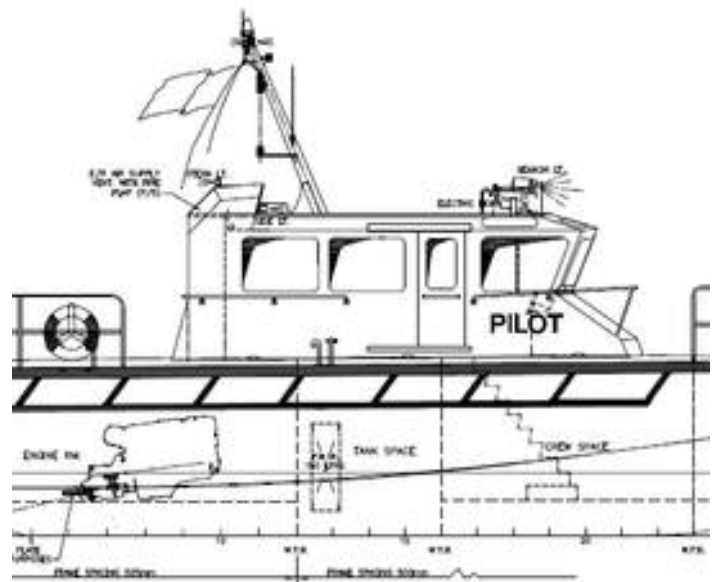
002.jpg



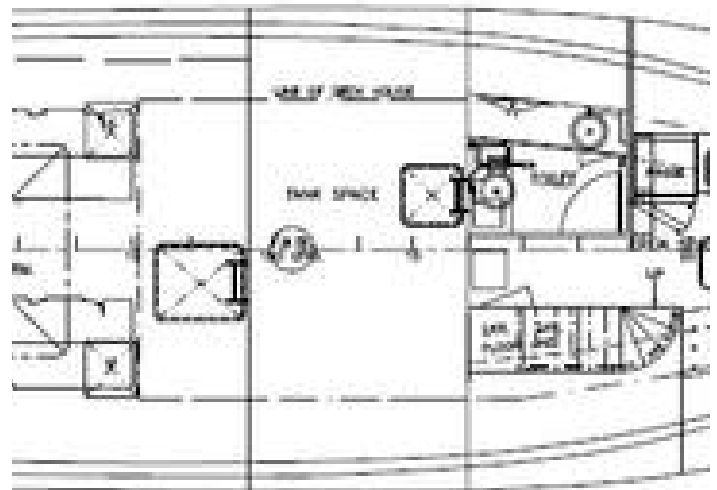
003.jpg



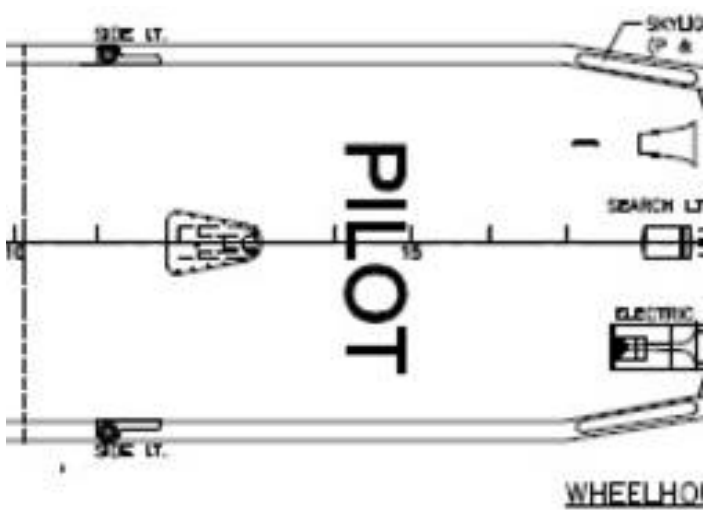
004.jpg



MAIN DECK

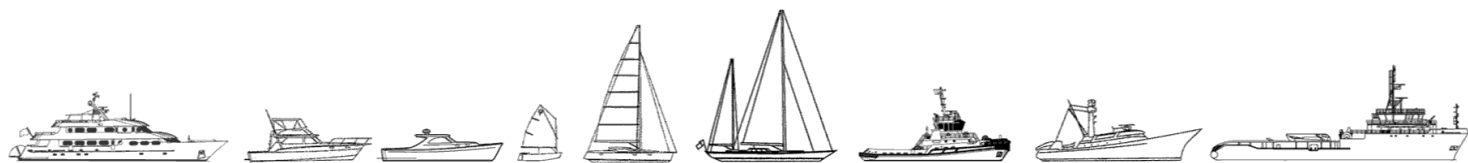


UNDER DECK



WHEELHOUSE

The details of all vessels are offered in good faith but we cannot guarantee or warrant the accuracy of this information nor warrant the condition of the vessel. Any buyer should instruct their agents, or their surveyors, to investigate such details as the buyer desires validated. This vessel is offered subject to sale, price change, location or withdrawal without notice.



AUSTRALIA - BULGARIA - INDIA - INDONESIA - ITALY - MALAYSIA - NEW ZEALAND - PANAMA - PHILIPPINES - SINGAPORE - SPAIN - UK - USA - VENEZUELA - VIETNAM