



SEABOATS

MARINE BROKERS WITH A GLOBAL APPROACH

AUSTRALIA - BULGARIA - INDIA - INDONESIA - ITALY - MALAYSIA - NEW ZEALAND - PANAMA - PHILIPPINES - SINGAPORE - SPAIN - UK - USA - VENEZUELA - VIETNAM

sales@seaboats.net - www.seaboats.net

NEW BUILD - 40m Fast Crew / Security Boat.



Listing ID - 3147

Description	NEW BUILD - 40m Fast Crew / Security Boat
Date Launched	Built to order
Length	40.4m (132ft 5in)
Beam	7.9m (25ft 11in)
Draft	1.7m (5ft 6in)
Location	Singapore
Broker	John Kearns john.kearns@seaboatsbrokers.com +64 21 400 805
Price	POA

40m Fast Crew/Security Boat, built to order under Lloyds +100A1 SSC WORKBOAT MONO G4 'Service area' MCH notation. The vessel shall be powered by three 1450 BHP Caterpillar C32 Marine Diesel engines coupled to three FFP and providing a top speed of 28.5 knots at 100% MCR @ 35 DWT and 26.5 knots at 85% MCR @ 35 DWT. The bridge shall be ballistic protected. Aircraft type seating is provided for twenty-nine personnel in the large deckhouse cabin in air conditioned comfort. The shipyard has delivered more than 25 units of the 40m Fast Crew Boat to the Offshore sector over the last 12 years and has now developed it's 3rd Generation Fast Crew/Security Boat that provides a very efficient hull form.

Delivery approx. 9 to 12 months depending on shipyard capacity.

PRINCIPAL DIMENSIONS

Length Overall: 40.4m

Beam Overall: 7.9m

Draft(Hull): 1.7m

Draft (Prop Tip): 1.9m
Depth (Moulded): 3.6m
Construction: Aluminium
G.R.T: 288 T

PROPULSION & PERFORMANCE

Main Engines: 3 x CATERPILLAR C32 ACERT DITTA
IMO Tier II - Type Approved
Power: 3 x 1450 BHP @ 2100 RPM
Max Speed: 28.5 KTS@ 35t DWT, 100% MCR
Service Speed: 26.5 KTS@ 35t DWT, 85% MCR Approx.

AUXILIARY EQUIPMENT

Generators: 2 x 86kw CATERPILLAR C4.4 Dita
Bow Thruster: 1 Tonne Hydraulic Thruster

CAPACITIES

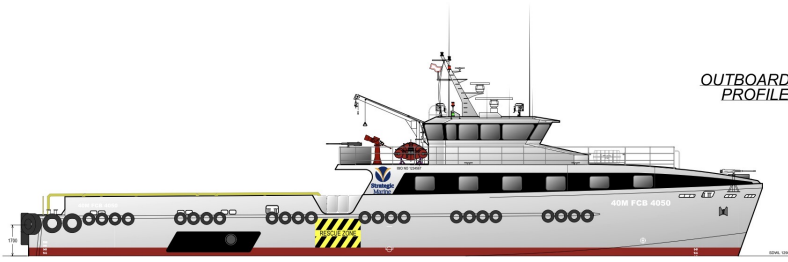
Fuel Oil: 70,000 Ltrs
Fresh Water: 30,000 Ltrs
Sullage: 500 Ltrs

CARGO DECK

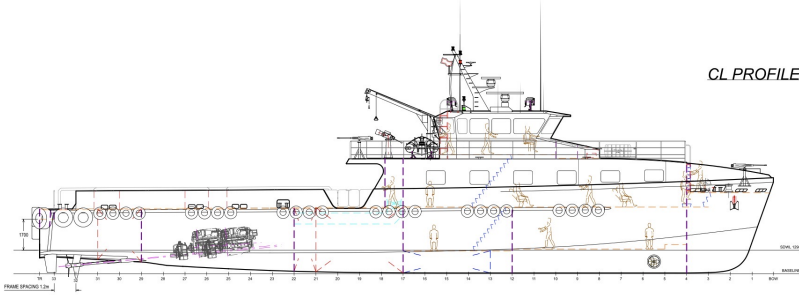
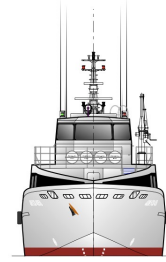
Max Deadweight: 95 tonnes
Area: 120 M2
Rating: 2 T/M2
Deck Cargo Capacity (Approx.): 40 tonnes

ACCOMMODATION

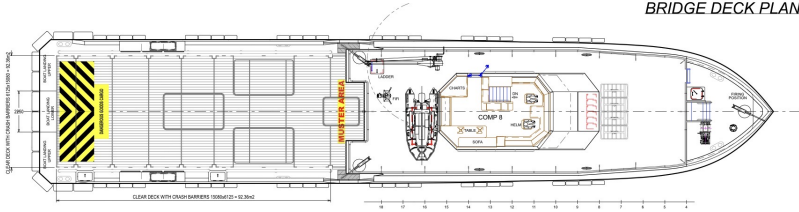
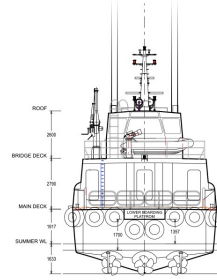
Offshore Service/Industrial Personnel: 29
Sleeping Cabins: 9
Sleeping Berths: 25



OUTBOARD
PROFILE

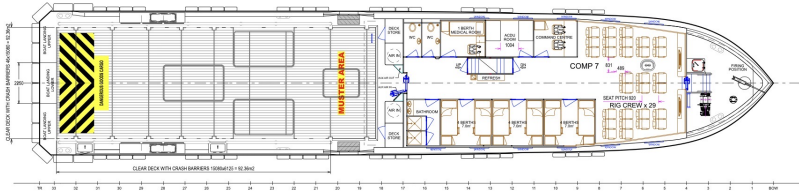
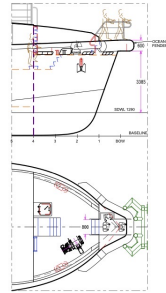


CL PROFILE

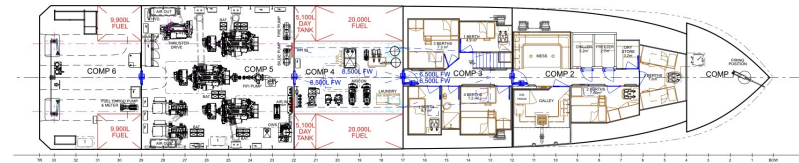


BRIDGE DECK PLAN

BOW BOARDING
OPTION



MAIN DECK PLAN



LOWER DECK PLAN

PRINCIPAL PARTICULARS	
LENGTH O.A.	m 40.4
BEAM MOULDED	m 7.9
DEPTH MOULDED	m 3.6
HULL STRUCTURE	ALU
SUPERSTRUCTURE	ALU
GRT	288
DRAFT MAX BL	m 1.7
DRAFT MAX PROP	m 1.9
CLEAR DECK	m 120
FUEL OIL	m 70
FRESH WATER	m 30
BLACK WATER	m 0.5
PASSENGERS	29
CABINS / BERTHS	9 / 25
DECK STRENGTH	ton 2.0
MAX DEAD WEIGHT	t 95
MAX DECK CARGO (approx)	t 40

PROPULSION	
3x CAT C32 C-RATING	
3x 1081 kW (1450 hp) @ 2300rpm	
BOW THRUSTER	11
PRELIM / PREDICTED SPEEDS	
AT 100% MCR, 35wt	kts 28.5
AT 85% MCR, 35wt	kts 28.5

PRELIMINARY
FOR REVIEW ONLY

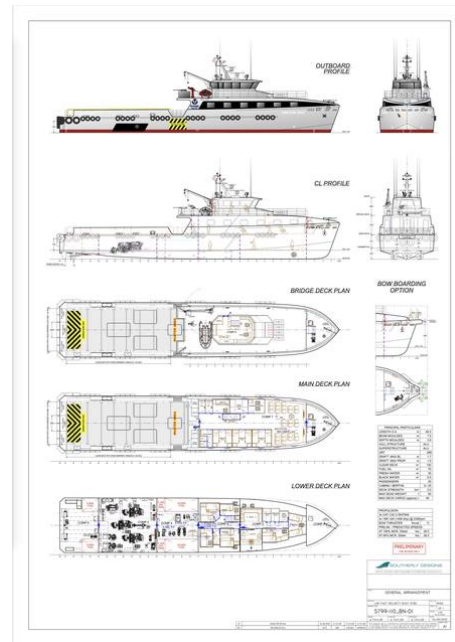


GENERAL ARRANGEMENT

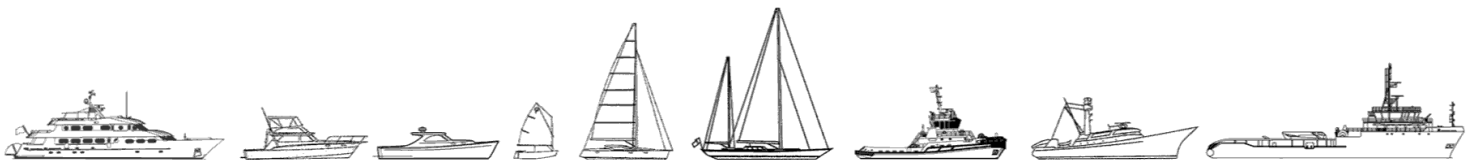
PROJECT	LOW FAST SECURITY BOAT (FSB)	FILE NO.	7990
DATE	01/06/2020	REVISION	1 OF 1
S799-II0_BN-DI		SCALE	1:100
DRAWN	A.TAYLOR	CHECKED	A.TAYLOR
DATE	01/06/2020	APPROVED	

REV	01	ISSUED FOR REVIEW	01/06/2020	A.TAYLOR	A.TAYLOR	A.TAYLOR	A.TAYLOR
		REVISION DETAILS	DATE	BY	CHKD	ENGRD	APPROVED

THIS DRAWING AND ALL INFORMATION CONTAINED HEREIN ARE THE SOLE PROPERTY OF SOUTHERLY DESIGNS LTD. IT IS TO BE USED ONLY FOR THE PROJECT AND PURPOSE SPECIFIED HEREIN. NO PART OF THIS DRAWING IS TO BE REPRODUCED OR TRANSMITTED IN ANY FORM OR BY ANY MEANS, WITHOUT THE WRITTEN PERMISSION OF SOUTHERLY DESIGNS LTD.



The details of all vessels are offered in good faith but we cannot guarantee or warrant the accuracy of this information nor warrant the condition of the vessel. Any buyer should instruct their agents, or their surveyors, to investigate such details as the buyer desires validated. This vessel is offered subject to sale, price change, location or withdrawal without notice.



AUSTRALIA - BULGARIA - INDIA - INDONESIA - ITALY - MALAYSIA - NEW ZEALAND - PANAMA - PHILIPPINES - SINGAPORE - SPAIN - UK - USA - VENEZUELA - VIETNAM